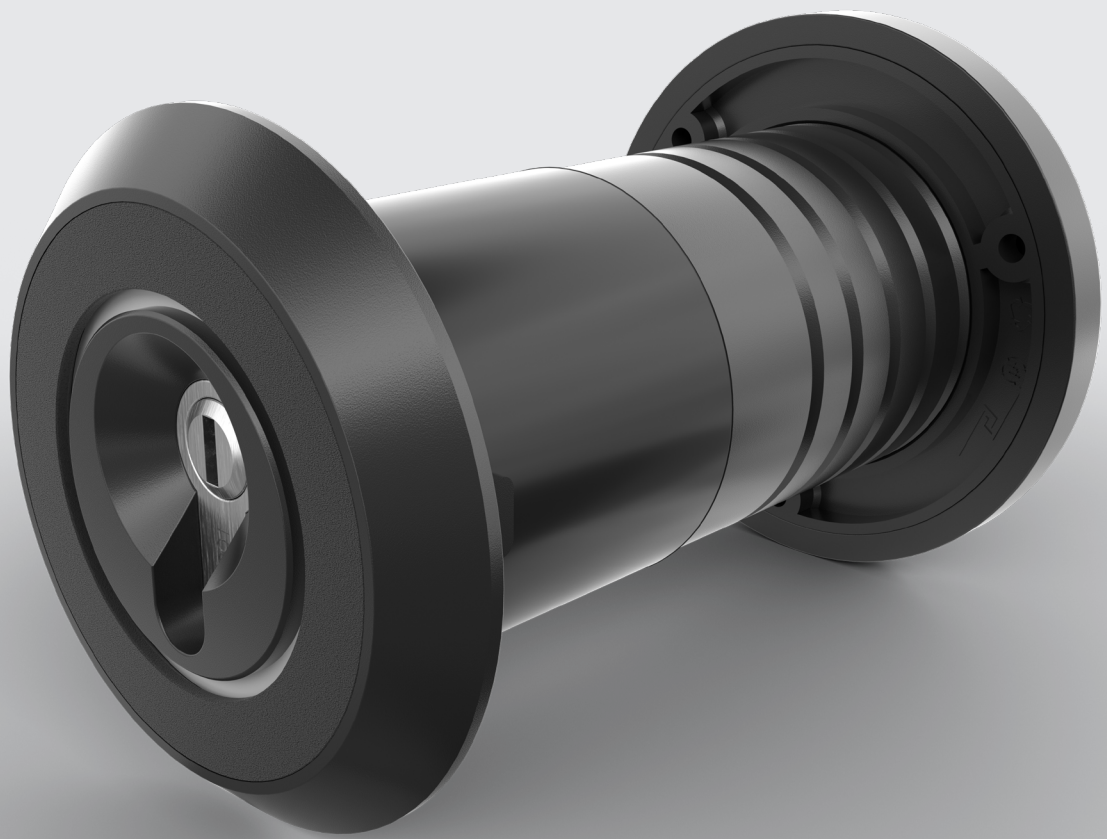
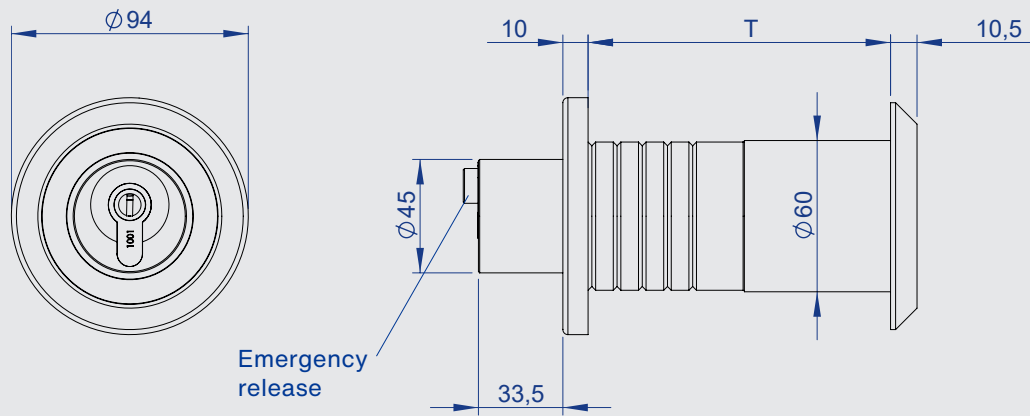


Bolt latch

Series 7150



- Robust gas-tight sliding door latch
- Gas-tight structure prevents freezing
- For door thickness from 80-160mm
- Locking system capable, Kaba-Version available
- With profile cylinder
- Also available as reed variant
- Pushbutton as emergency release on the inside



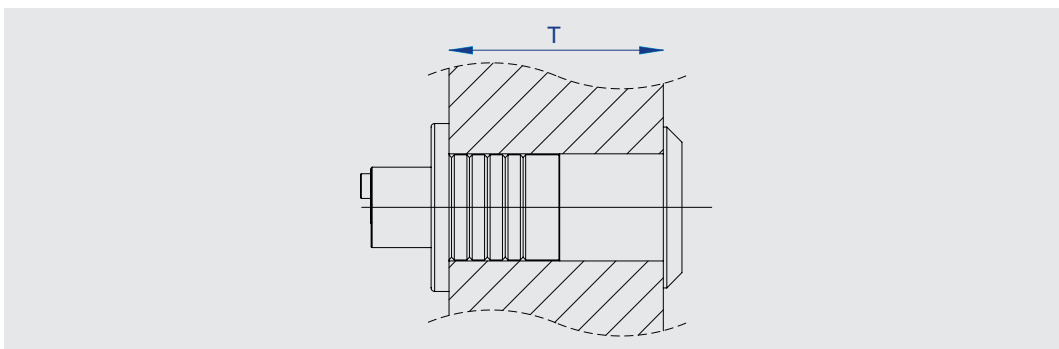
This sheer unbelievably robust sliding door latch lets nothing upset it. Especially not temperatures: The built-in seal minimizes air flow and ensures that the entire bolt latch, including the profile cylinder, does not freeze. Sounds good? It gets even better: This bolt latch is compatible with locking systems and can also be requested as a Kaba variant. As an emergency release of the lock, a pushbutton on the inside of the bolt latch is used. A reed version is also available, which can transmit the current state of the lock - open or closed.

Materials

Main components: Plastic
Springs: Spring steel
Other components: Die-cast zinc, chrome-plated

Note: Please also see the assembly instructions.

T = Door thickness

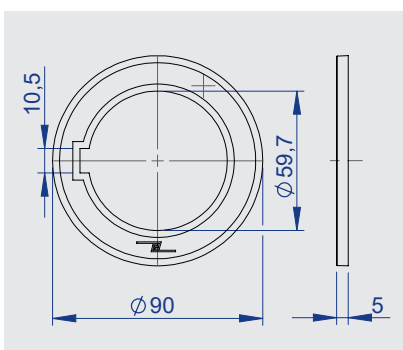


Bolt latch

T = 80 mm	7150-020080
T = 100 mm	7150-020100
T = 120 mm	7150-020120
T = 140 mm	7150-020140
T = 160 mm	7150-020160

Bolt latch, reed variant, with 0.5 m Cable

T = 80 mm	7150-020081
T = 100 mm	7150-020101
T = 120 mm	7150-020121
T = 140 mm	7150-020141
T = 160 mm	7150-020161



7150-020005 Spacer ring, 5 mm

