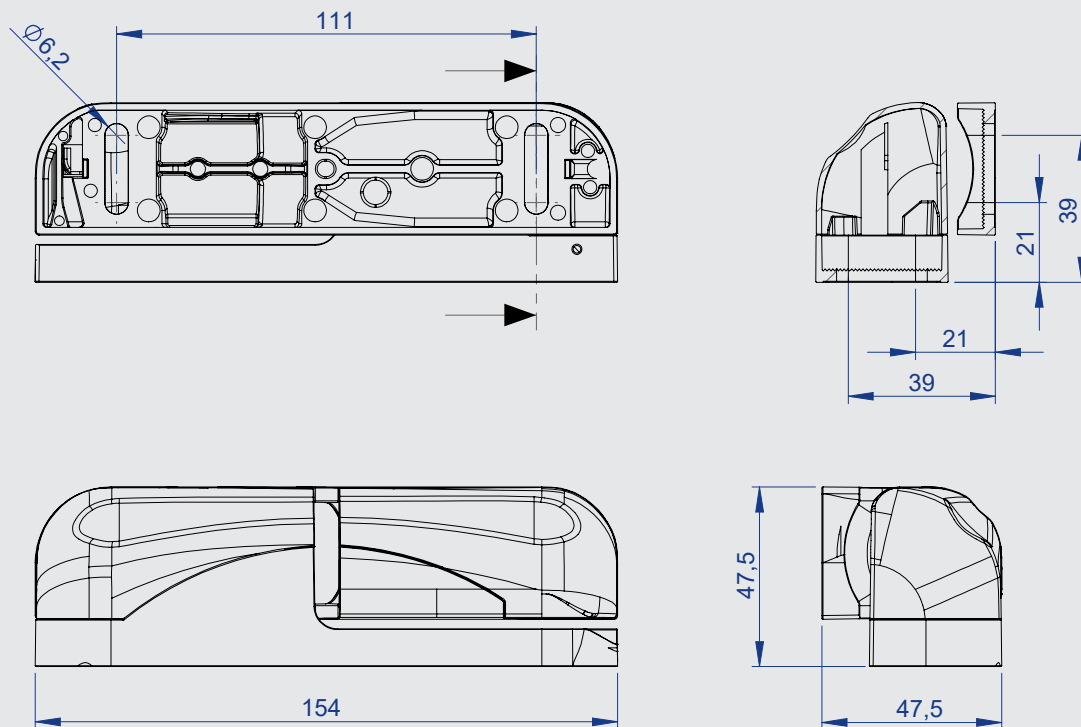


## Edge-mounted hinge Series 7514 BONO



- Modern hinge for highest demands
- **Adjustable in three axes**
- rising / non-rising variants
- **For left- and right-hand doors**
- Unhingeable
- **Disassembly protection**
- Load capacity with two hinges of max. 80 kg
- **Caps colored, removable**
- Custom colors on request
- **Offset min. 47,5 mm**



If you are looking for a stylish, but at the same time reliable and durable hinge, you should simply bet on these four letters: Bono. „You have found what you are looking for“, because this edge-mounted hinge not only meets the highest demands, but also always looks incredibly modern due to the wide selection of colored and removable caps. Bono is tried and tested as it combines a slew of useful functions: It is adjustable in three axes, available either rising or non-rising, can be unhinged and is available in both left-hand and right-hand versions — universal usability par excellence. The disassembly protection when the door is closed and a load capacity of max. 80 kg with two hinges put the icing on the cake.

## Materials

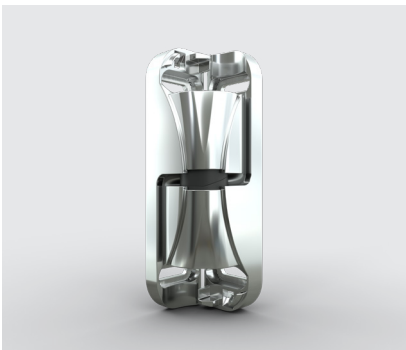
Hinge: Die-cast zinc, chrome-plated or powder-coated  
 Caps: Plastic  
 Other components: Plastic or die-cast zinc or stainless steel

Finish: Chrome-plated, powder-coated

Standard colors: Hinge: chrome, gray (RAL 7001)  
 Caps: black, gray, blue

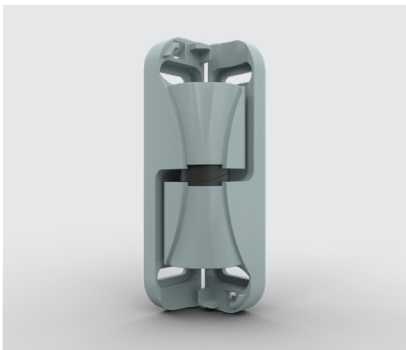
**Note:** Please also see the assembly instructions.

# Variants



Hinge, chrome-plated

Right, rising	<b>7514-020070</b>
Left, rising	<b>7514-020071</b>
Right, non-rising	<b>7514-020072</b>
Left, non-rising	<b>7514-020073</b>



Hinge, gray (RAL 7001)

Right, rising	<b>7514-020080</b>
Left, rising	<b>7514-020081</b>
Right, non-rising	7514-020082
Left, non-rising	7514-020083

# Optional



Shims

Black	<b>7514-020031</b>
Gray	<b>7514-020030</b>
Blue	<b>7514-020032</b>



Caps (single)  
order 2 caps per hinge

	Left	Right
Black	<b>7514-020007</b>	<b>7514-020006</b>
Gray	<b>7514-020005</b>	<b>7514-020004</b>
Blue	<b>7514-020009</b>	<b>7514-020008</b>

