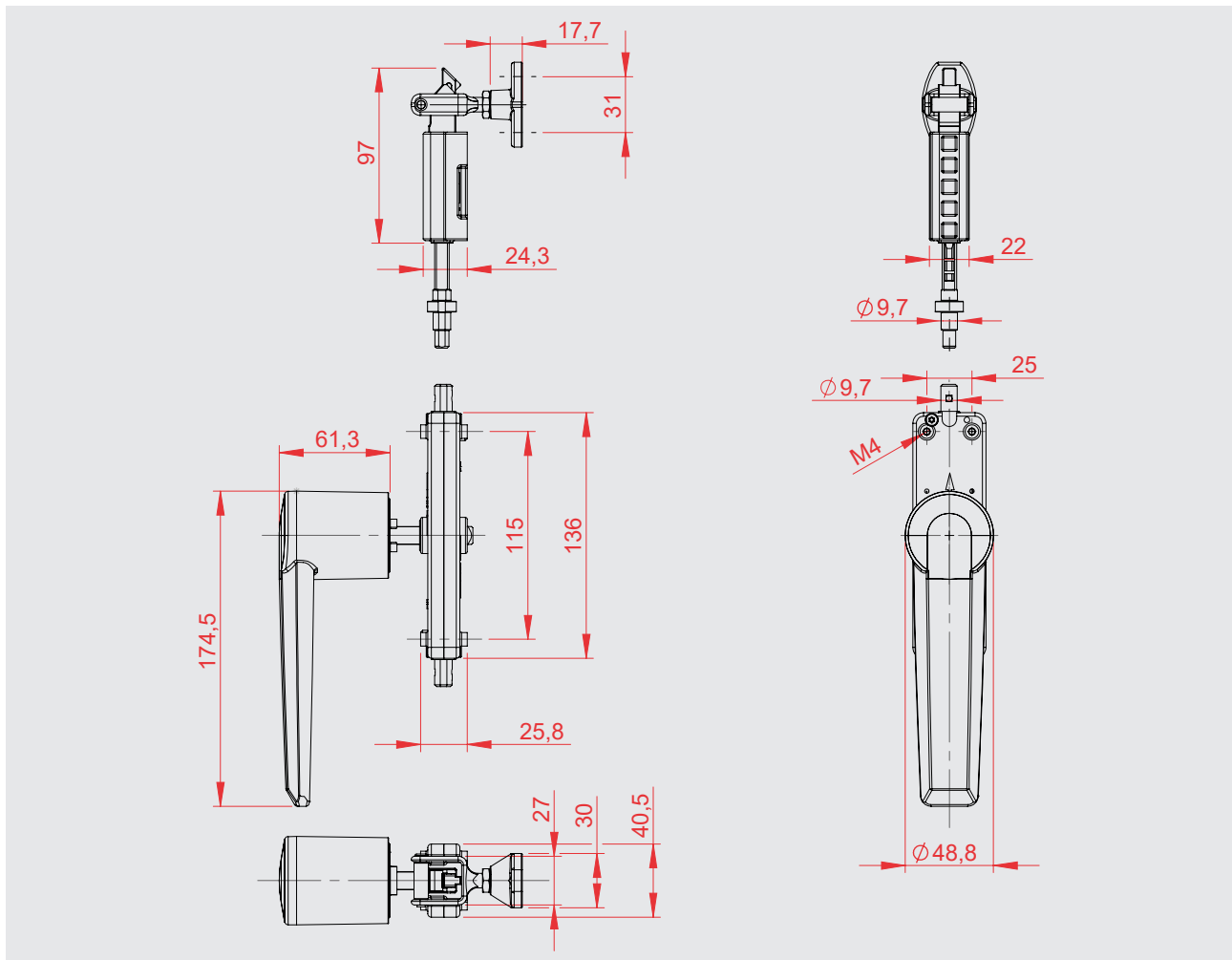


Two-point latching system Series 6337

- Two-point latching system containing stainless steel components for high endurance and temperature critical enduses
- For table devices and particularly for stand alone appliances
- Seamless power transmission through tubes and reinforced gears
- Safety venting position
- Minimal component wear despite high sealing force
- Easy door closing
- Complementary handle to 6334 and 6339 series
- Handle customization upon request





The driving force when it comes to putting a stop to unwanted opening: With its considerable number of stainless steel casting components, this latching system is particularly suitable for temperature-critical applications. Extreme heat? Keep cool. The processed material has other advantages as well: It is extremely hygiene-friendly and at least as robust. It has to be, because this closure is designed for a size of doors where a single point closure is not enough. Twice simply is better, which is why this latching system not only has a two-point latch, but also a two-step latch. A safety feature to have the oven release steam in the evaporation position, before opening the door completely — it's simply "two" good. And it gets even better: The power transmission tube guarantees seamless force transmission. Fine adjustment with the help of the strike is also possible.

The tubes are not included in the scope of delivery and must be provided by the customer. We recommend tubes with an inner diameter of 10 mm.

Materials

Handle:	Plastic
Mechanics:	Die-cast zinc, chrome-plated
Gear unit:	Die-cast zinc
Gears:	Die-cast zinc
Latch:	Stainless steel
Strike:	Stainless steel

Other components: Die-cast zinc or stainless steel

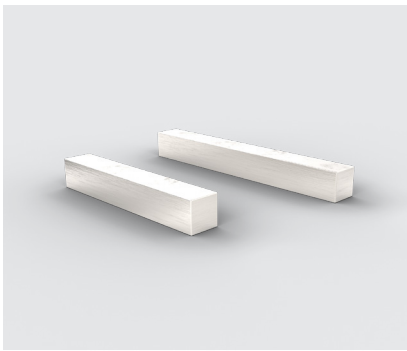
Colors: black

Note: Please also see the assembly instructions.



Mechanic, with handle,
with 10mm square bar insert

	anthracite gray	black
Right	6337-020110	6337-020112
Left	6337-020111	6337-020113



Square bar, □10 mm
to connect handle and gear unit

□10 x 55	6337-020205
□10 x 60	6337-020200



6337-020010
Gear unit, with 10 mm square hole



6337-020300
Strike



6337-020050
Latch unit

