

Locking technology  
for cold storages.



Professional  
quality is the key.



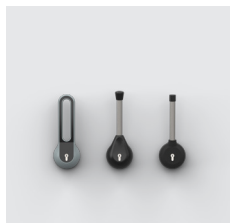
[www.rahrbach.de](http://www.rahrbach.de)

**RAHRBACH**  
Verschlusstechnik









**Multi-function latching system**

Page 4



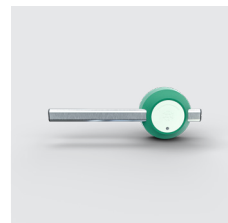
**Multi-function latching system**  
Series 7501 VITRO  
Page 16



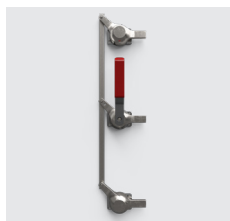
**Multi-function latching system**  
Series 7503 NITRO  
Page 20



**Multi-function latching system**  
Series 7506  
Page 24



**Multi-function latching system**  
Series 7507  
Page 28



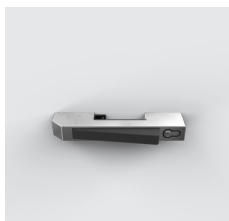
**Multi-point latching**  
Series 7505 ROBUSTO

Page 32



**Cold room door latch**  
Series 6000 JUMBO

Page 36



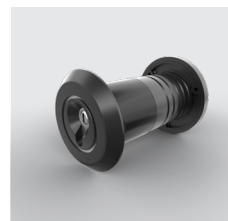
**Cold room door latch**  
Series 6002 JUMBO

Page 44



**Cold room door latch**  
Series 6004 RONDO

Page 50



**Bolt latch**  
Series 7150

Page 56



**Panel fastener**  
Series 0270

Page 60



**Edge-mounted hinge**  
Series 4514 FUTURO

Page 64



**Edge-mounted hinge**  
Series 7514 BONO

Page 68



**Edge-mounted hinge**  
Series 4000/4001

Page 72



**Edge-mounted hinge**  
Series 4510/4511

Page 76



**Edge-mounted hinge**  
Series 4002/4003

Page 80



**Edge-mounted hinge**  
Series 4004

Page 84



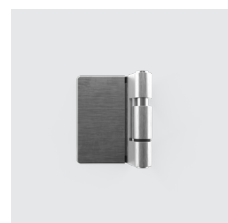
**Edge-mounted hinge**  
Series 4006

Page 88



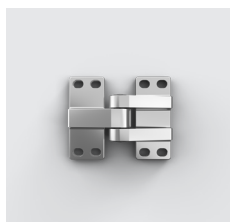
**Hinge**  
Series 4296

Page 92



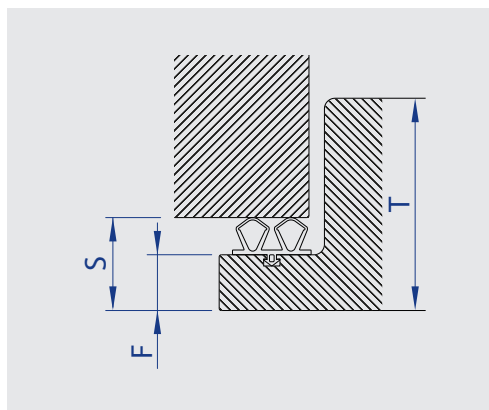
**Hinge**  
Series 5000

Page 96



**Hinge**  
Series 7902

Page 98



**S** = Offset  
**T** = Door thickness  
**F** = Rabbet thickness



## Multi-function latching system

### Outside handles

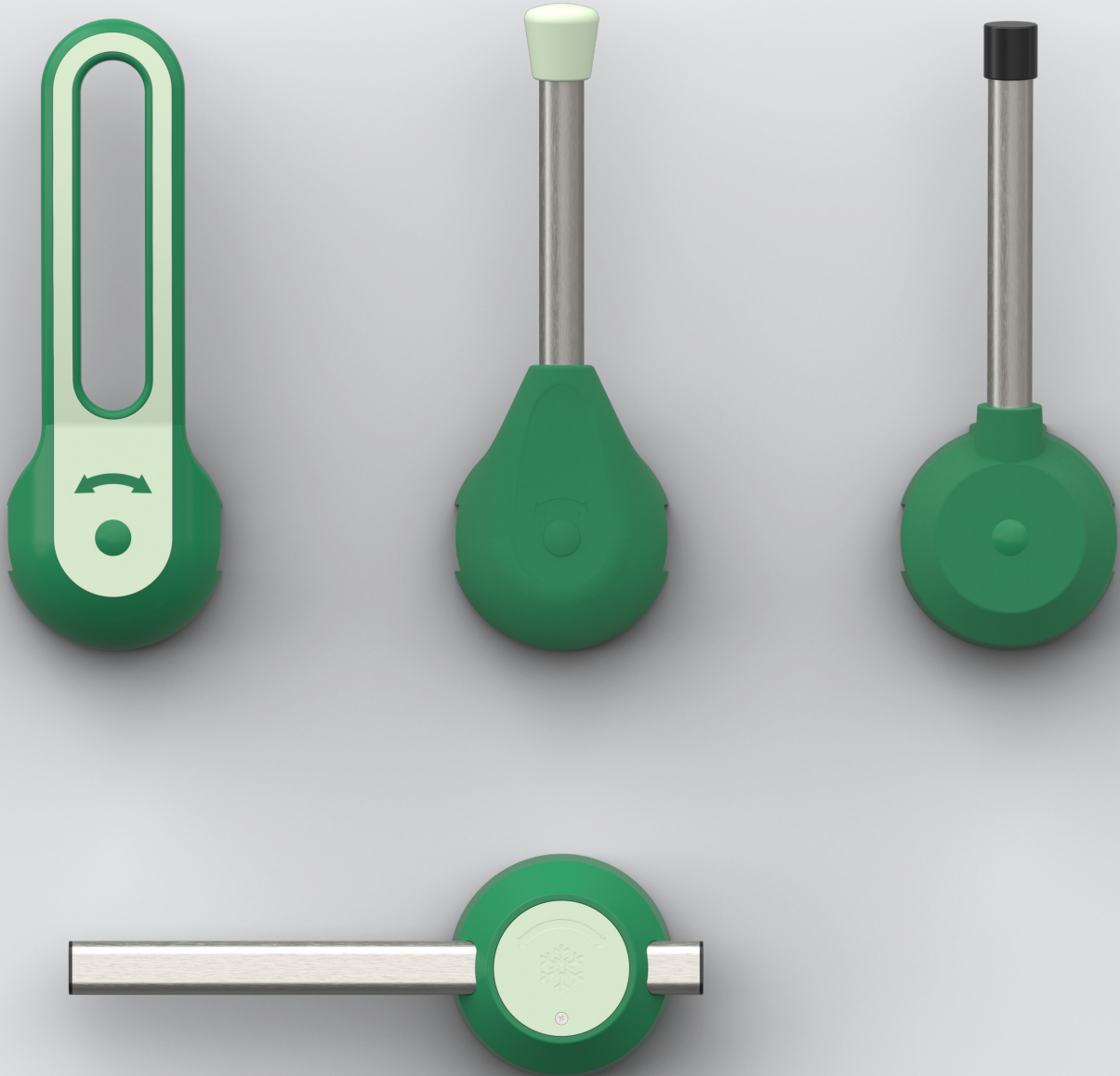


- The square bar length of the outside handle is determined by the door thickness (T)
- The socket of the inside handle is determined by the type of door stop
- Series replaces the 7101 series
- 2 hole pattern variants ensure compatibility with already existing hole patterns on the market
- Easy assembly:  
Outside and inside handle are each secured in the flange during assembly, so they cannot fall out when screwed together
- Can be used for left- and right-hand doors by simply rotating the flange
- Automatic tolerance compensation ensures play-free installation of the multi-functional latching systems





## Inside handles





## Outside handles



## Which hole pattern?

2 hole patterns for outer- and inner flange:

- Hole pattern 1 for new developments
- Hole pattern 2 compatible with existing hole patterns on the market

Flanges can be used for left- and right-hand doors by appropriate positioning

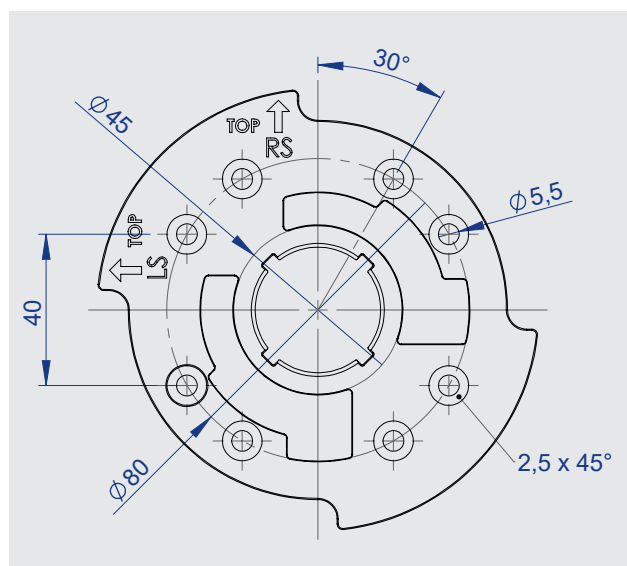


## Outside handles



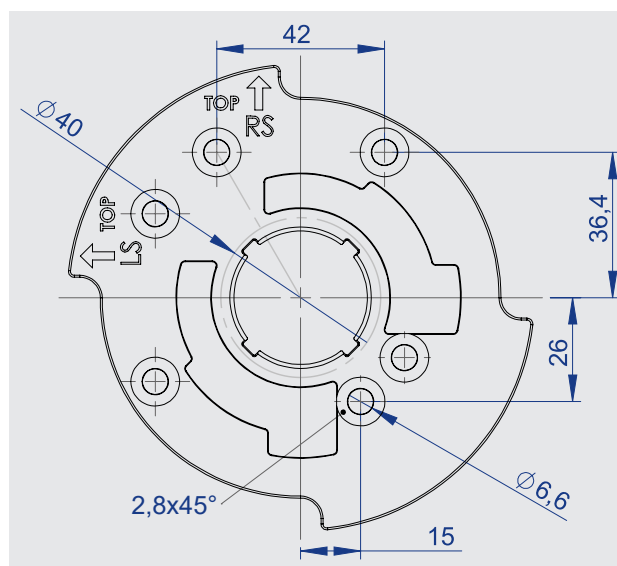
	7501		7503		7506	
Door thickness	Hole pattern 1	Hole pattern 2	Hole pattern 1	Hole pattern 2	Hole pattern 1	Hole pattern 2
T = 80 mm	<b>7501-020080</b>	7501-092080	<b>7503-020080</b>	7503-092080	<b>7506-020080</b>	7506-092080
T = 90 mm	7501-020090	7501-092090	7503-020090	7503-092090	7506-020090	7506-092090
T = 100 mm	<b>7501-020100</b>	7501-092100	<b>7503-020100</b>	7503-092100	<b>7506-020100</b>	7506-092100
T = 110 mm	7501-020110	7501-092110	7503-020110	7503-092110	7506-020110	7506-092110
T = 120 mm	<b>7501-020120</b>	7501-092120	<b>7503-020120</b>	7503-092120	<b>7506-020120</b>	7506-092120
T = 130 mm	7501-020130	7501-092130	7503-020130	7503-092130	7506-020130	7506-092130
T = 140 mm	7501-020140	7501-092140	7503-020140	7503-092140	7506-020140	7506-092140
T = 160 mm	7501-020160	7501-092160	7503-020160	7503-092160	7506-020160	7506-092160
T = 180 mm	7501-020180	7501-092180	7503-020180	7503-092180	7506-020180	7506-092180
T = 200 mm	7501-020200	7501-092200	7503-020200	7503-092200	7506-020200	7506-092200

## Outside flanges



Hole pattern 1  
Die-cast zinc, cathodic dip coated (CDC)

→ Standard item → On request

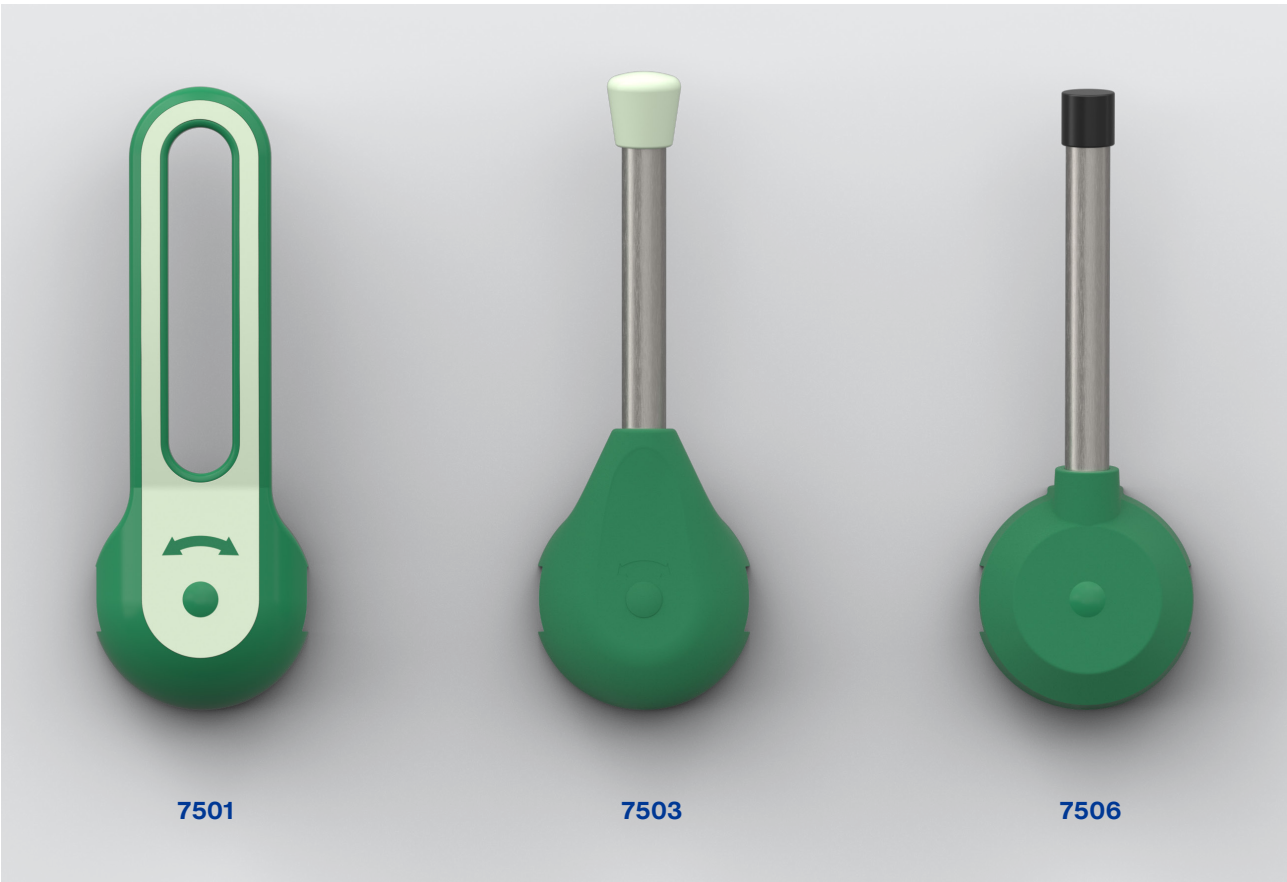


Hole pattern 2  
Die-cast zinc, cathodic dip coated (CDC)

T = Door thickness



Inside handles & sockets



Socket for inside handle,  
nose 80 mm



Socket for inside handle,  
nose 100 mm



Socket for inside handle,  
for doors opening to the inside



Socket for inside handle,  
nose 80 mm, for multi-point latching

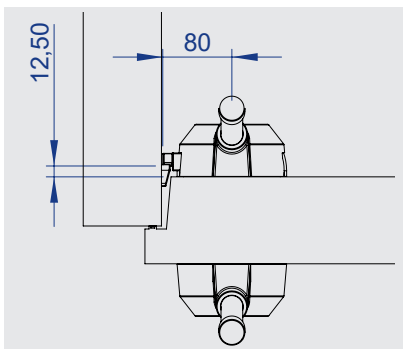


Socket for inside handle,  
nose 100 mm, for multi-point latching

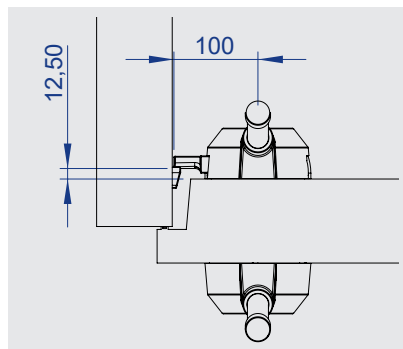


Socket for inside handle,  
Spring-loaded catch

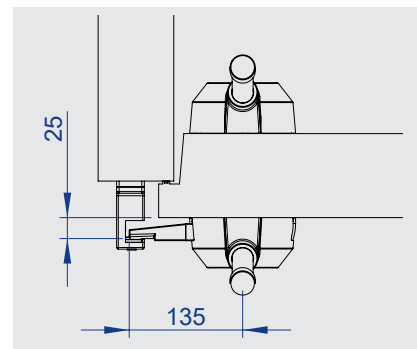
## Door stop examples



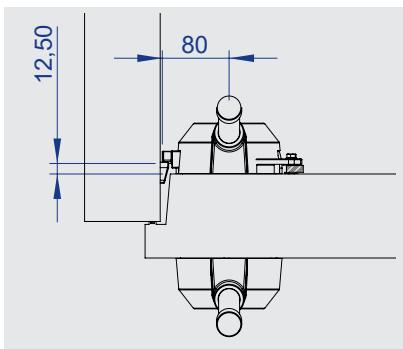
Nose 80 mm



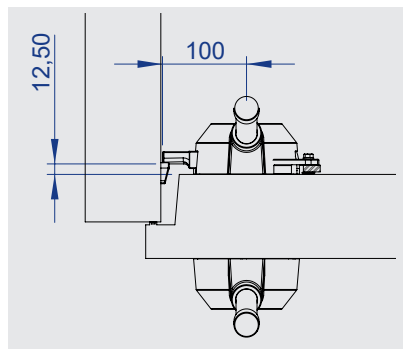
Nose 100 mm



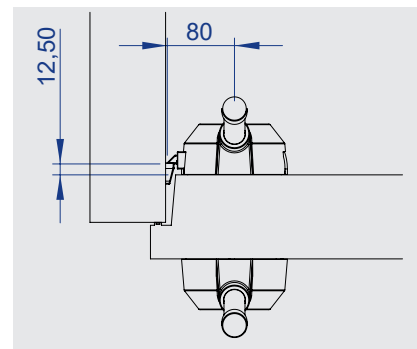
Opening to the inside



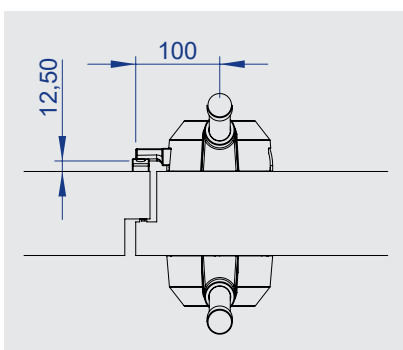
Nose 80 mm for multi-point latching



Nose 100 mm for multi-point latching



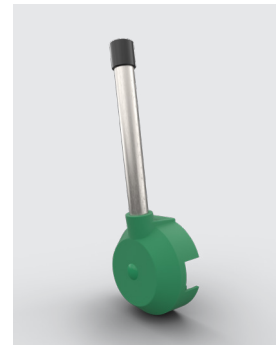
Spring-loaded catch



Double leaf door



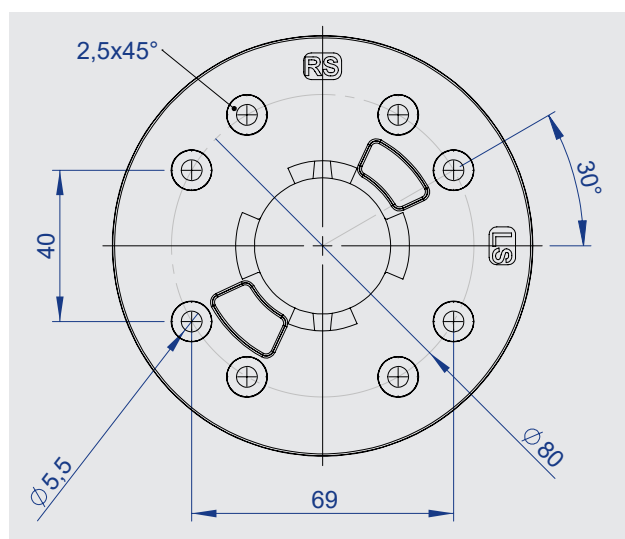
## Inside latching systems



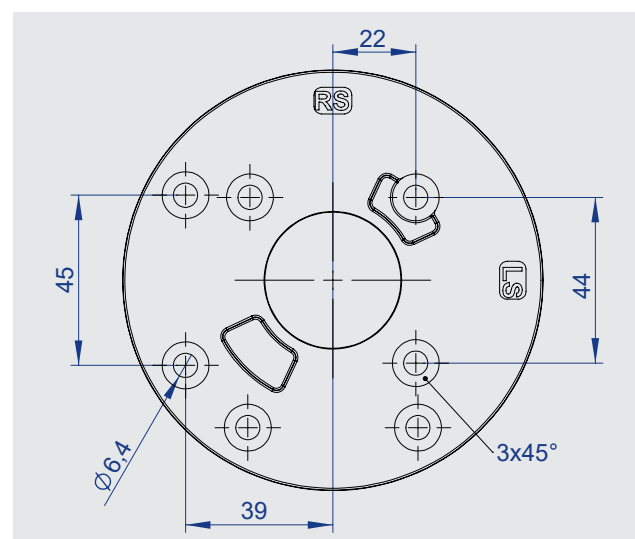
	<b>7501</b>		<b>7503</b>		<b>7506</b>	
	Hole pattern 1	Hole pattern 2	Hole pattern 1	Hole pattern 2	Hole pattern 1	Hole pattern 2
Socket, nose 80 mm	<b>7501-020221</b>	7501-092221	<b>7503-020221</b>	7503-092221	<b>7506-020221</b>	7506-092221
Socket, nose 100 mm	7501-020231	7501-092231	7503-020231	7503-092231	7506-020231	7506-092231
Socket for doors opening to the inside	7501-020235	7501-092235	7503-020235	7503-092235	7506-020235	7506-092235
Socket, nose 80 mm, MPL f. left-hand doors	7501-020223	7501-092223	7503-020223	7503-092223	7506-020223	7506-092223
Socket, nose 80 mm, MPL f. right-hand doors	7501-020222	7501-092222	7503-020222	7503-092222	7506-020222	7506-092222
Socket, nose 100 mm, MPL f. left-hand doors	7501-020233	7501-092233	7503-020233	7503-092233	7506-020233	7506-092233
Socket, nose 100 mm, MPL f. right-hand doors	7501-020232	7501-092232	7503-020232	7503-092232	7506-020232	7506-092232
Spring-loaded catch	<b>7501-020220</b>	7501-092220	<b>7503-020220</b>	7503-092220	<b>7506-020220</b>	7506-092220

The inside latching system consists of inside handle, handle socket and inside flange.

## Inside flanges



Hole pattern 1  
plastic



Hole pattern 2  
plastic



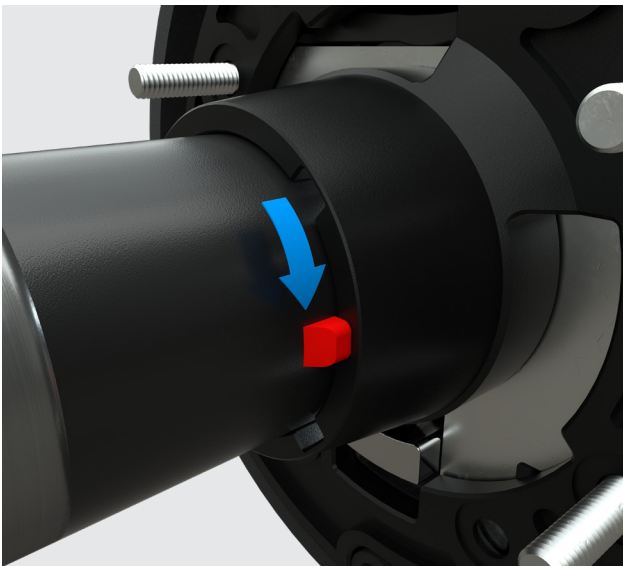


## Outside handle assembly assistance



### 1. Inserting outside handle into flange

The outside handle is rotated by 45° relative to the outside flange which is screwed to the door leaf. The guide cam (shown in red) of the outside handle can slide into the groove of the outside flange. The outside handle is inserted into the outside flange/door leaf and the guide cam thus reaches the back of the sleeve of the outside flange.



### 2. Fixating the outside handle

By turning the outside handle now, the guide cam connects the outside handle and the outside flange without play. At the same time it ensures smooth operation of the handle on the flange. The outside flange and outside handle are now securely preassembled with each other.

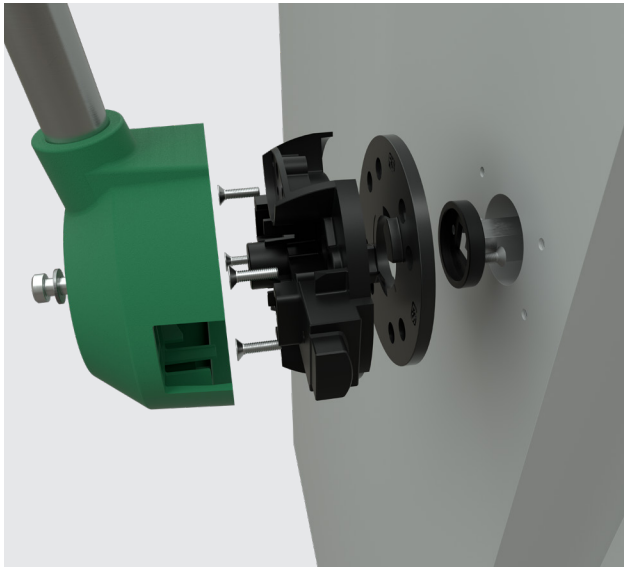


### 3. Mounting preparation for inside handle

Pre-assembly of the outside flange with the outside handle not only ensures optimal positioning of both components, but also prevents the handle from falling out after flipping the door for the assembly of the inside handle. The assembly aid of the latching system saves time, and acts as a „third hand“ which makes the assembly simple and efficient.

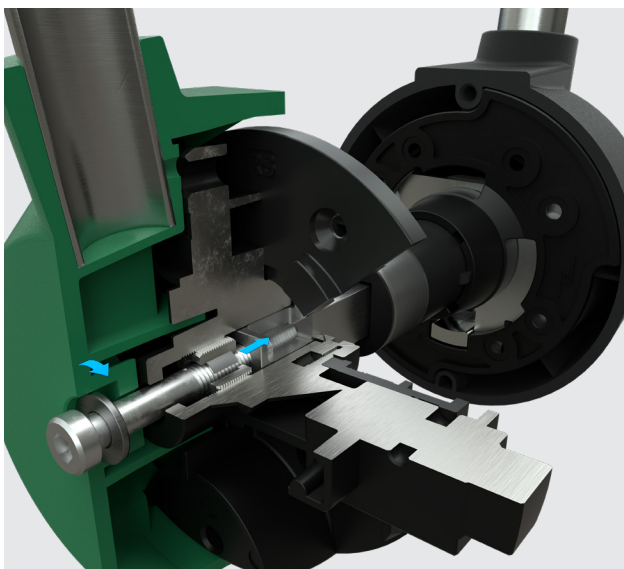


## Automatic tolerance compensation



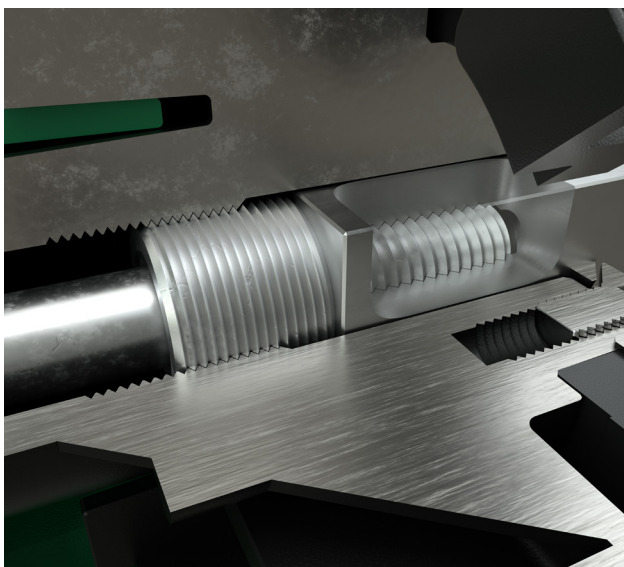
### 4. Mounting the inside handle

To mount the inside handle, the pre-assembled unit (consisting of socket and internal flange), is screwed onto the inside of the door leaf. For this purpose, the socket is provided with corresponding holes through which the flange can be mounted. The optimum positioning of the socket and the inner flange in relation to each other also ensures play-free and smooth operation of the latching system.



### 5. Attaching the inside handle

When screwing the inside latch to the square bar of the outside handle, Rahrbach works with the proven technology of automatic tolerance compensation. This is most helpful due to door thickness tolerances. Here, the cylinder head screw is guided through an inner ring with a spring cage before it engages in the inner thread of the square bar. When the screw is screwed into the square bar, the inner ring automatically moves towards the square bar. This makes sure the inside handle can be mounted tightly to the outside handle without any further adjustment.



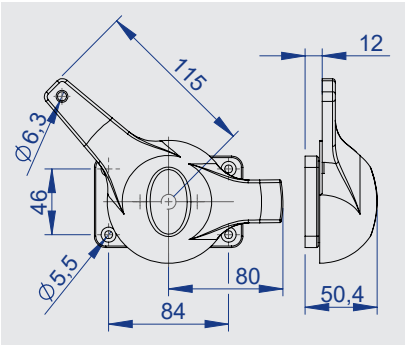
### 6. Play-free mounting without accessories

When the inner ring meets the square bar, the inner handle and square bar can be securely screwed together without play. The image on the left shows the screw inside the square bar and the inner ring resting against it without play. Thanks to the optimum positioning of the handles on the flanges and the play-free mount of the components, this latching system has a very smooth action. In addition, there is no need to use any other parts like washers or shims to tighten the inside and outside handle securely.

**Assembly of the entire latching system is thus quick, easy and without play and errors.**

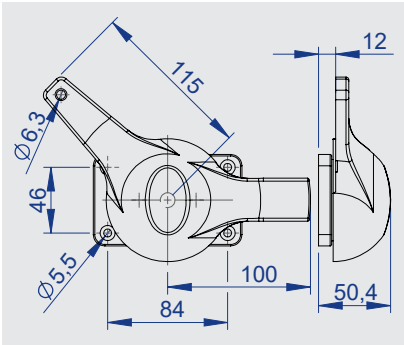


# Accessories



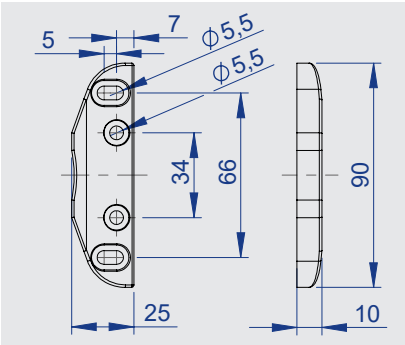
Multi-point latch, 80 mm

Right	7500-020010
Left	7500-020011

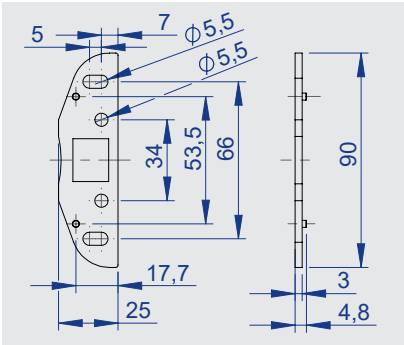


Multi-point latch, 100 mm

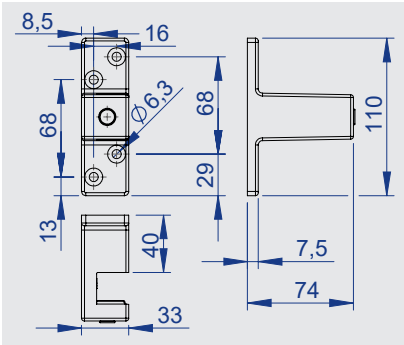
Right	7500-020012
Left	7500-020013



7101-020061  
Latching cam

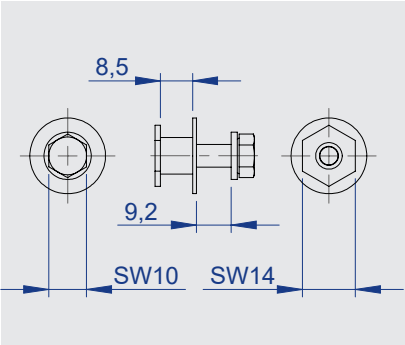


7500-020062  
Shim for latching cam, 3 mm

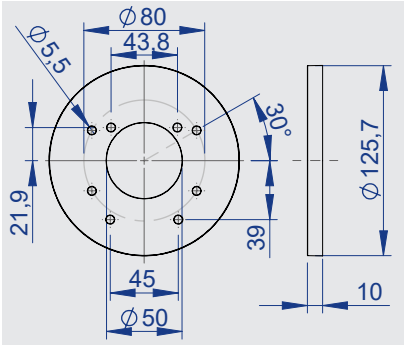


Strike  
for inside-opening doors 74 mm

Right	7101-020520
Left	7101-020521



7101-020081  
Fixation set for multipoint latching



7501-020063  
Spacer ring

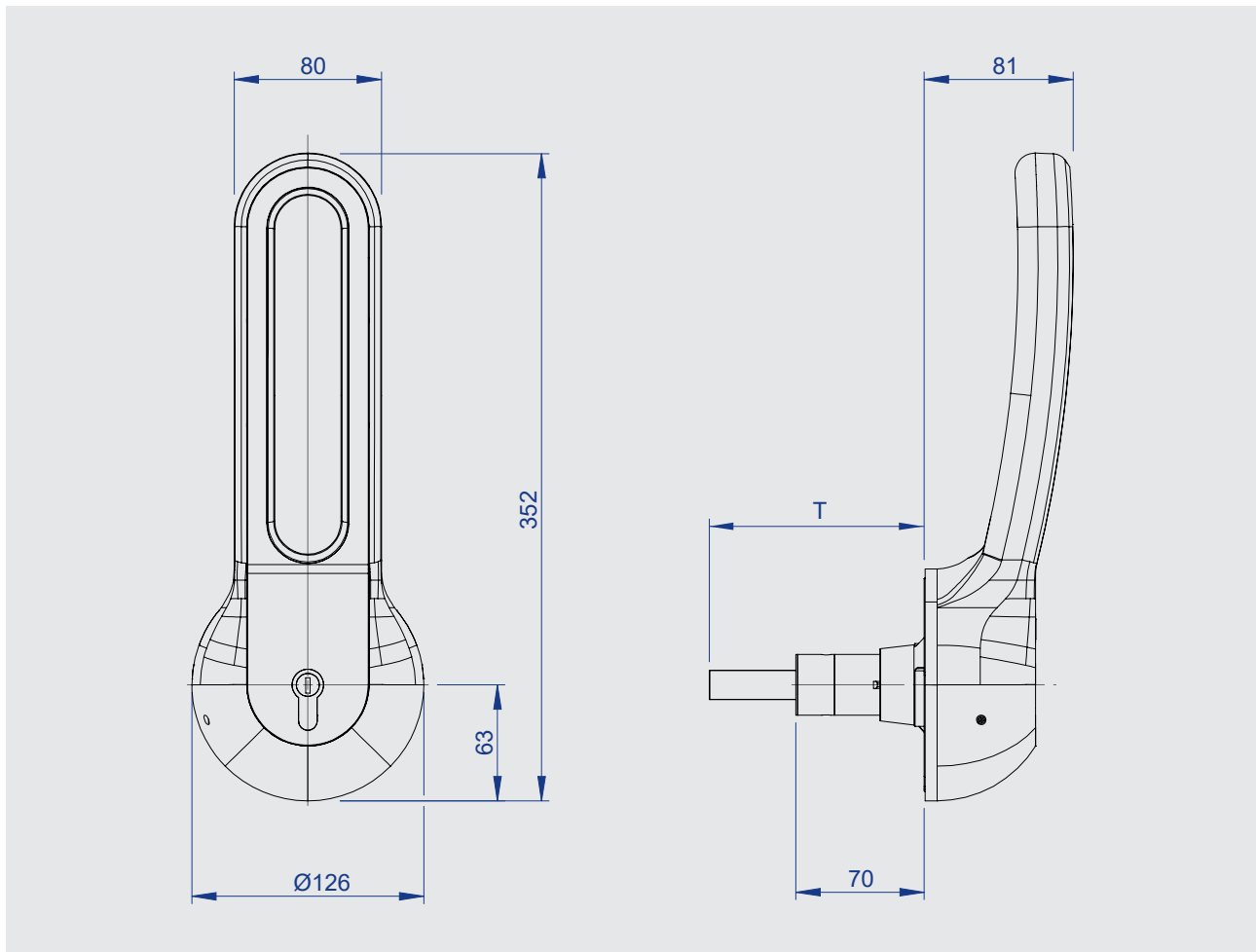




## Multi-function latching system Series 7501 VITRO



- Modern plastic latch for high demands
- Modular system with different socket variants for various door stops
- Quick and easy to assemble
- Integrated tolerance compensation of the door thickness
- Can be used for left- and right-hand doors
- Lockable and ready for master key systems, Kaba versions available
- Different locking variants
- Standard door thickness 80-200mm
- Temperatures: -40°C - +80°C



This latch is very versatile for cooling units. Our multi-purpose latching system comes with a wide range of socket variants for different cold room door stops. The enormous versatility is made possible by a flexible modular system in which the handles are not only lockable, but also ready for master key systems. In addition, a Kaba version can also be requested. This system can be used for both left- and right-hand doors by simply rotating the flanges and inner socket to the appropriate position. The modern plastic latching system not only masters the highest demands, but is also quick and easy to install. The integrated tolerance compensation keeps both handles close together. The multi-functional latching system is suitable for door thicknesses from 80 mm to 200 mm. Even when the outside handle is locked, the inside handle still opens the door without overriding the locked state.

Part numbers for outside handles see p. 7

Part numbers for inside handles see p. 10

## Materials

Handles: Plastic  
 Mechanics: Die-cast zinc, cathodic dip coated (CDC) or stainless steel  
 Other components: Stainless steel, steel, zic-plated or plastic

## Cap

Inside handle: Self luminescent

Colors: gray & black  
 custom colors (RAL) on request  
 (Inside handle: green)

**Note:** Please also see the assembly and mounting instructions.



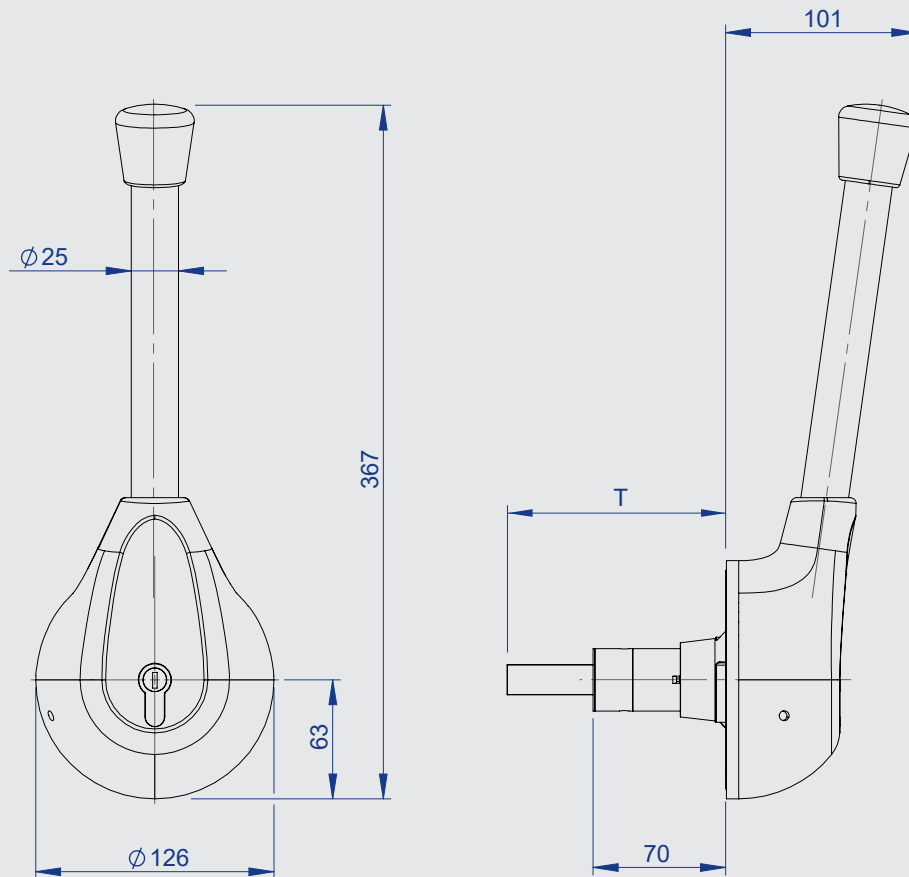




## Multi-function latching system Series 7503 NITRO



- Modern plastic latch for high demands
- **Modular system with different socket variants for various door stops**
- Quick and easy to assemble
- **Integrated tolerance compensation of the door thickness**
- Can be used for left- and right-hand doors
- **Lockable and ready for master key systems, Kaba versions available**
- Different locking variants
- **Standard door thickness 80-200mm**
- Temperatures: -40°C - +80°C



This latch is very versatile for cooling units. Our multi-purpose latching system comes with a wide range of socket variants for different cold room door stops. The enormous versatility is made possible by a flexible modular system in which the handles are not only lockable, but also ready for master key systems. In addition, a Kaba version can also be requested. This system can be used for both left- and right-hand doors by simply rotating the flanges and inner socket to the appropriate position. The modern plastic latching system not only masters the highest demands, but is also quick and easy to install. The integrated tolerance compensation keeps both handles close together. The multi-functional latching system is suitable for door thicknesses from 80 mm to 200 mm.

Even when the outside handle is locked, the inside handle still opens the door without overriding the locked state.

Part numbers for outside handles see p. 7

Part numbers for inside handles see p. 10

## Materials

Handle housings: Plastic  
 Handle pipe: Stainless steel  
 Mechanics: Die-cast zinc, cathodic dip coated (CDC) or stainless steel  
 Other components: Plastic or die-cast zinc

Cap

Inside handle: Self luminescent

Colors: black  
 custom colors (RAL) on request  
 (Inside handle: green)

**Note:** Please also see the assembly and mounting instructions.



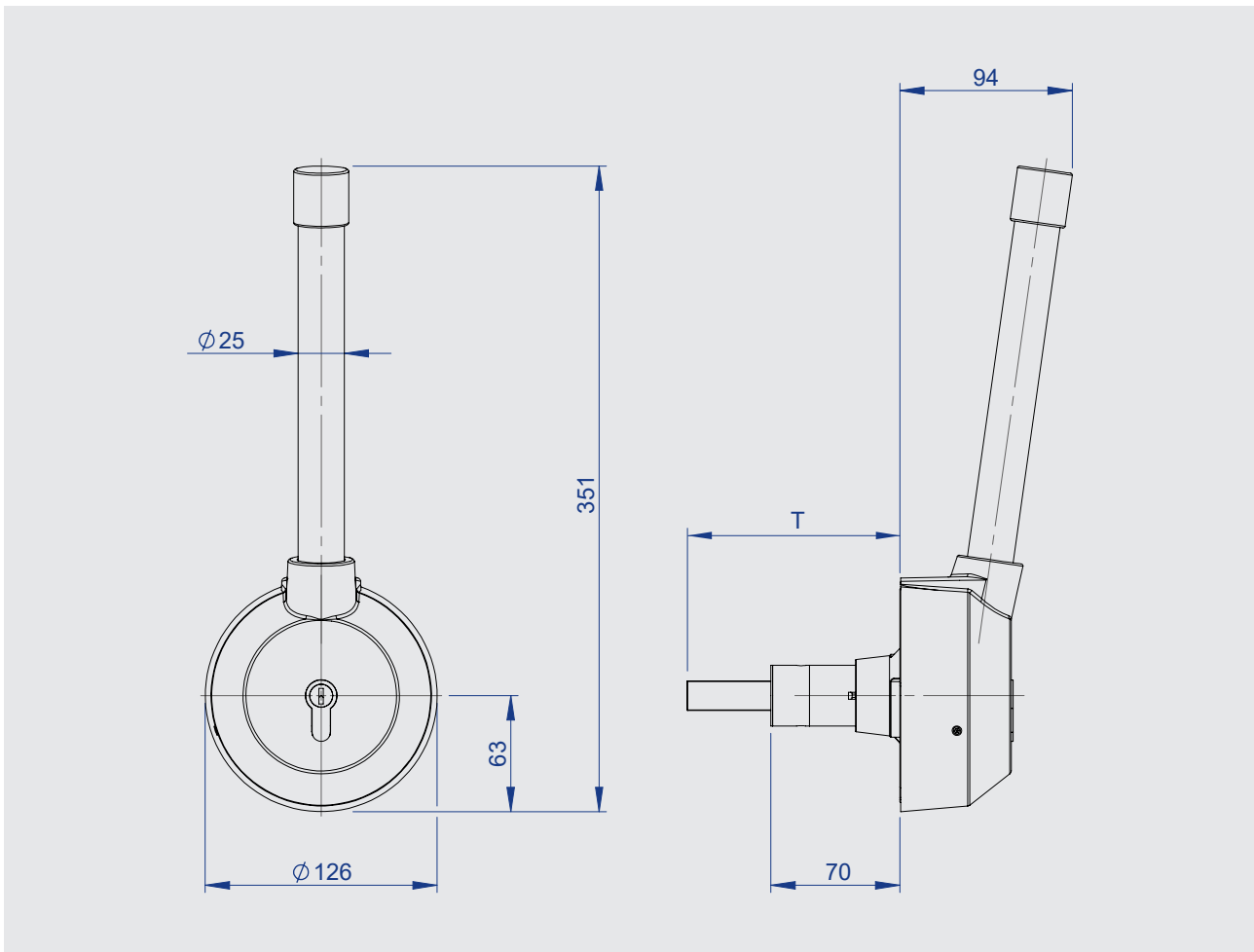




## Multi-function latching system Series 7506



- Modern plastic latch for high demands
- Modular system with different socket variants for various door stops
- Quick and easy to assemble
- Integrated tolerance compensation of the door thickness
- Can be used for left- and right-hand doors
- Lockable and ready for master key systems, Kaba versions available
- Different locking variants
- Standard door thickness 80-200mm
- Temperatures: -40°C - +80°C



This latch is very versatile for cooling units. Our multi-purpose latching system comes with a wide range of socket variants for different cold room door stops. The enormous versatility is made possible by a flexible modular system in which the handles are not only lockable, but also ready for master key systems. In addition, a Kaba version can also be requested. This system can be used for both left- and right-hand doors by simply rotating the flanges and inner socket to the appropriate position. The modern plastic latching system not only masters the highest demands, but is also quick and easy to install. The integrated tolerance compensation keeps both handles close together. The multi-functional latching system is suitable for door thicknesses from 80 mm to 200 mm.

Even when the outside handle is locked, the inside handle still opens the door without overriding the locked state.

Part numbers for outside handles see p. 7

Part numbers for inside handles see p. 10

## Materials

Handle housings: Plastic  
 Handle pipe: Stainless steel  
 Mechanics: Die-cast zinc, cathodic dip coated (CDC) or stainless steel  
 Other components: Plastic or die-cast zinc

Colors: black  
 custom colors (RAL) on request  
 (Inside handle: green)

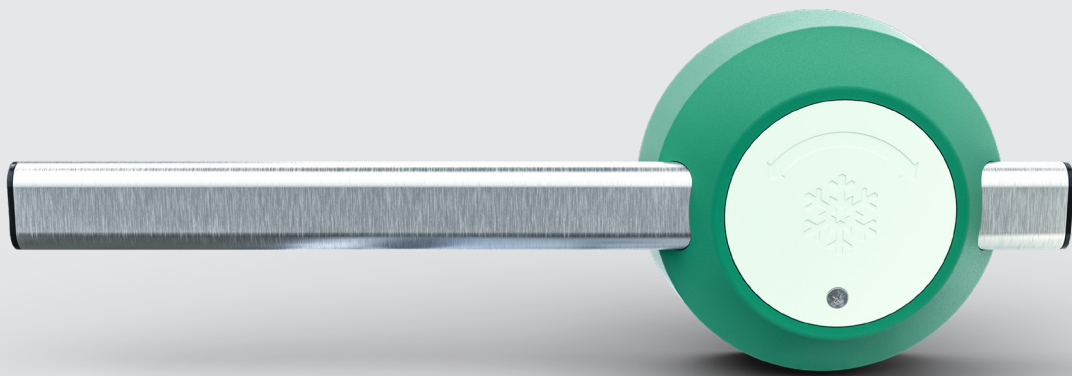
**Note:** Please also see the assembly and mounting instructions.



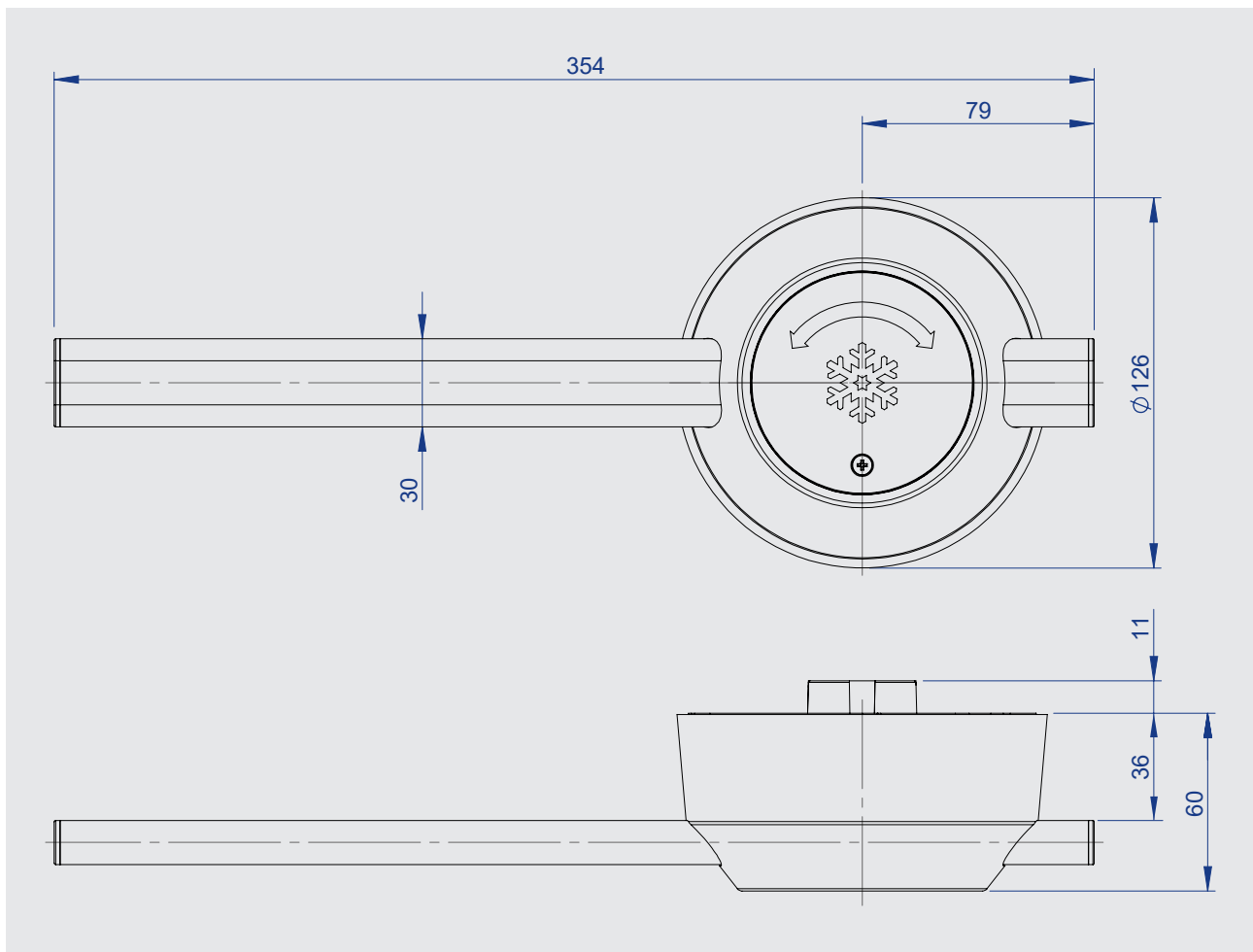




## Inside handle for multi-function latching systems Series 7507



- Alternative inside handle with flat tube for higher detent dimension (36mm)
- **Quick and easy to assemble**
- Integrated tolerance compensation of the door thickness
- **Can be used for left- and right-hand doors**
- Compatible with series 7501, 7503 & 7506



This inside handle is an extension to the series 7501, 7503 and 7506. It can be used with either of those outside handles to add an alternative detent height and a different door stop alternative. Unlike the other handles which share the same flange, this inside handle comes with its own flange. It allows the handle to clip right on, positioning it perfectly so it can be screwed tightly to the door while maintaining a smooth action. The hole pattern of the flange in addition to the detent height of 36 mm match existing patterns and dimensions on the market. Of course it also comes with an integrated tolerance compensation, which is a huge help while mounting this handle and connecting it to its counterpart. The most important feature is its emergency opening. Regardless of the locked-state of the outside handle, the inside handle will always open the door, without changing the locked-state.

Part numbers for outside handles see p. 7

### Materials

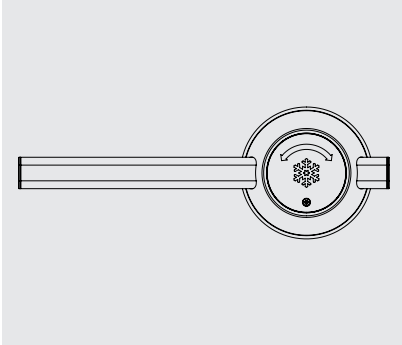
Handle housings: Plastic  
 Handle pipe: Stainless steel  
 Mechanics: Plastic  
 Other components: Plastic or stainless steel

Cap: Self luminescent

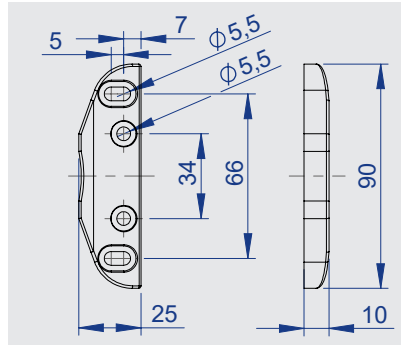
**Note:** Please also see the assembly and mounting instructions.



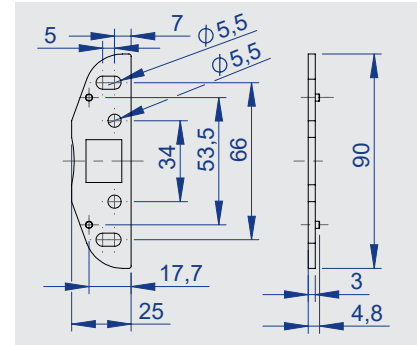
## Inside handle & accessories



**7507-020050**  
Inside handle

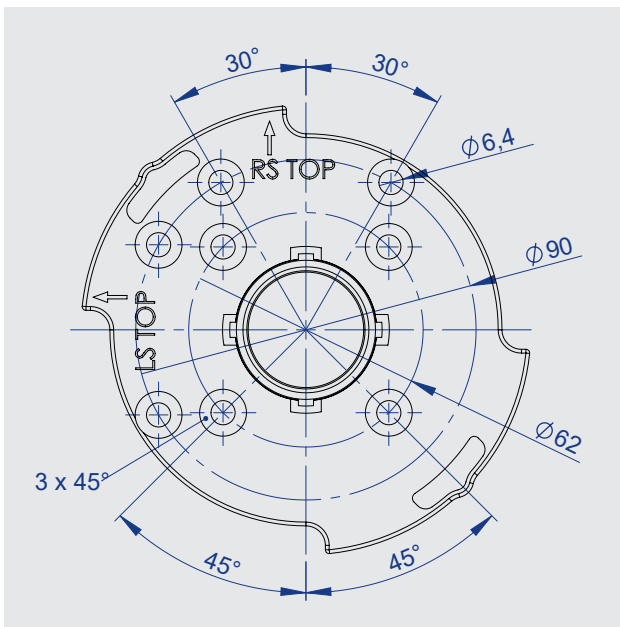


**7101-020061**  
Latching cam,  
plastic

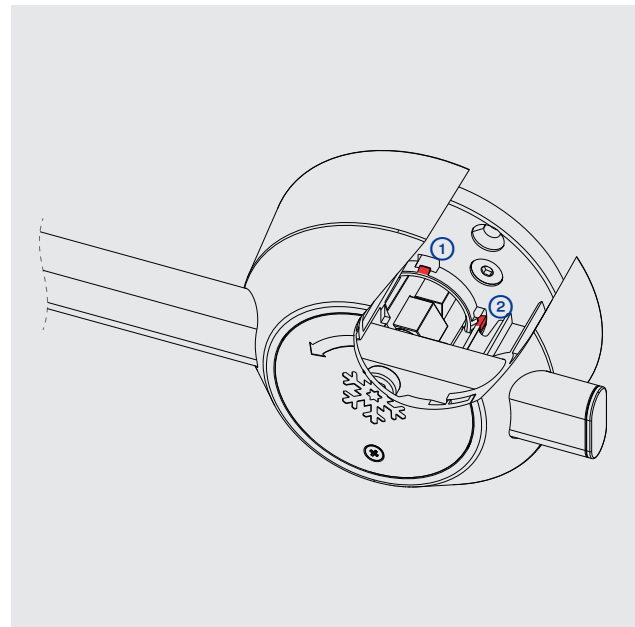


**7500-020062**  
Shim for latching cam, 3 mm

## Inside flange & mounting assistance



**Inside flange for series 7507**  
(Part included with the inside handle)



**Clips & Hooks**

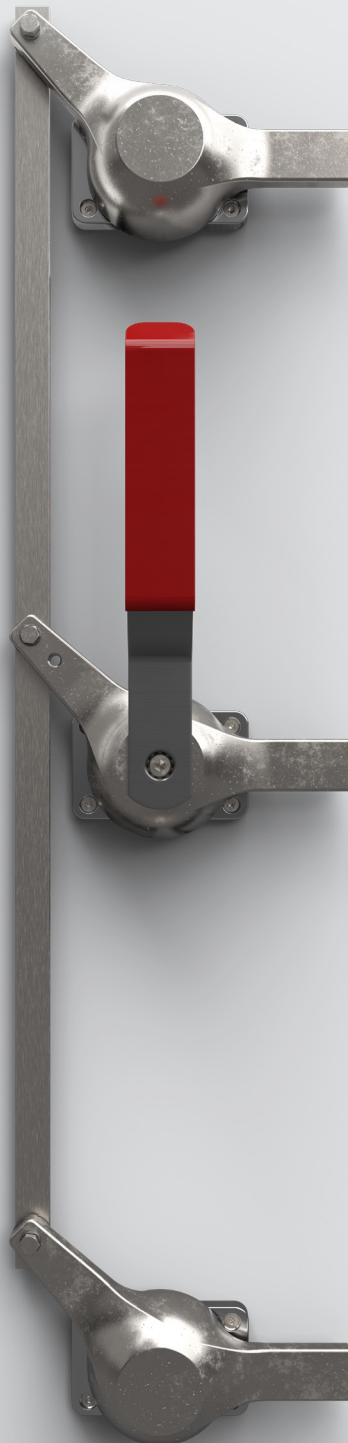
Flange is preconfigured for hole pattern 2.  
For more details on hole patterns see p. 6.

There are clips ② within the housing of the inside handle, which latch into the hooks ① during assembly. This makes sure the handle is positioned perfectly and runs smoothly on the flange. The tolerance compensation allows a tight connection to the outside handle.

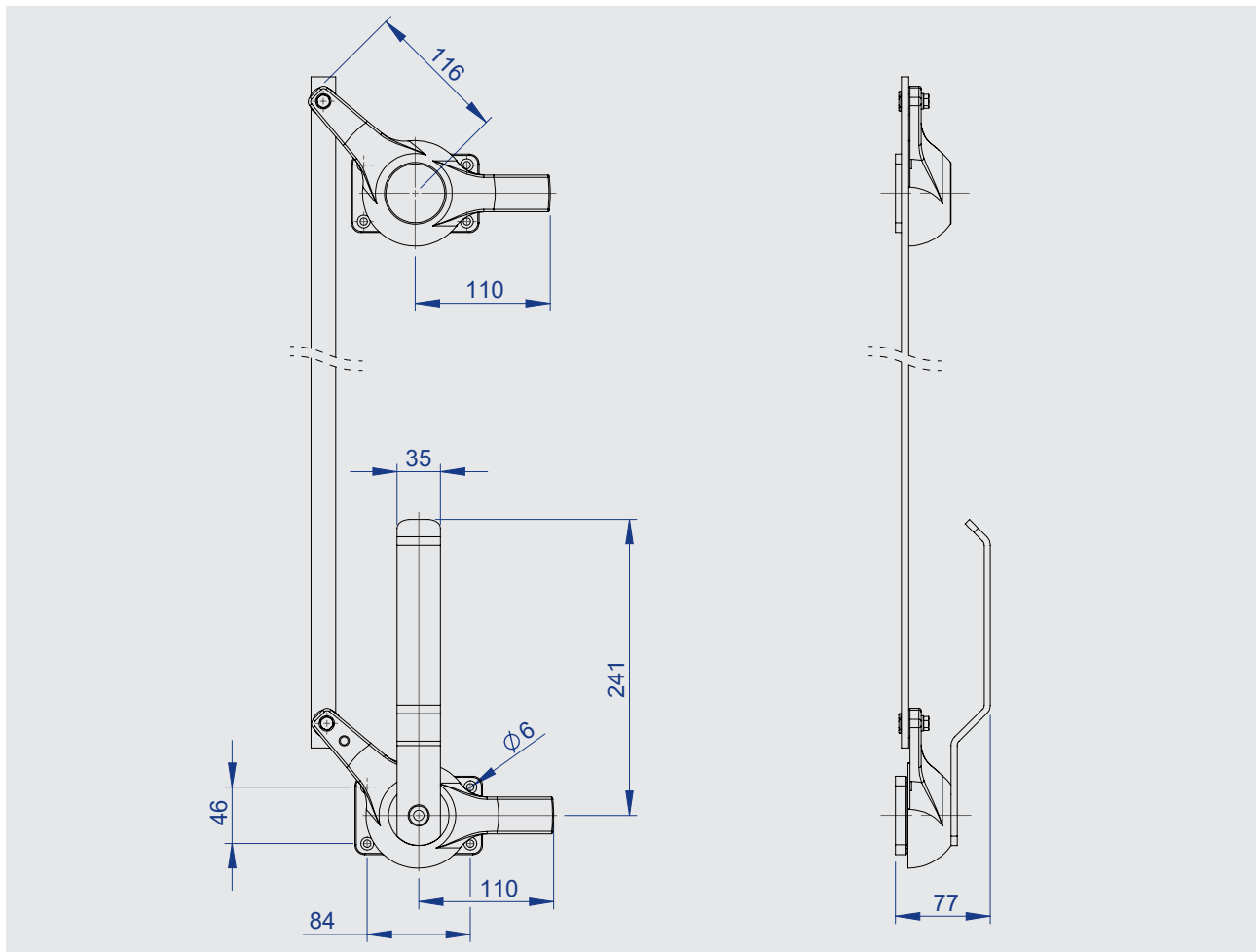
For more details on the tolerance compensation see p. 13.



## Multiple-point latching Series 7505 ROBUSTO



- Specially designed stainless steel latching system for extreme temperatures from -80°C to +180°C
- [Can be used as single-point or multi-point latching device](#)
- Various latching variants thanks to flexible modular system
- [Customized variants possible](#)
- Complementary outside handles series 7501, 7503 & 7506



The name says it all: This robust stainless steel latching system can handle even the most extreme temperatures. From -80°C to +180°C, the multi-point latching system masters any situation. It is also ultra variable. That's because the flexible modular system also allows for single-point latching systems. There are virtually no limits to the variations, because the system can be perfectly adapted to almost any customer requirement. Compatibility with the 7501, 7503 and 7506 series outside levers adds the finishing touch.

Locking bar not included.

Part numbers for outside handles see p. 7

### Materials

All components: Stainless steel

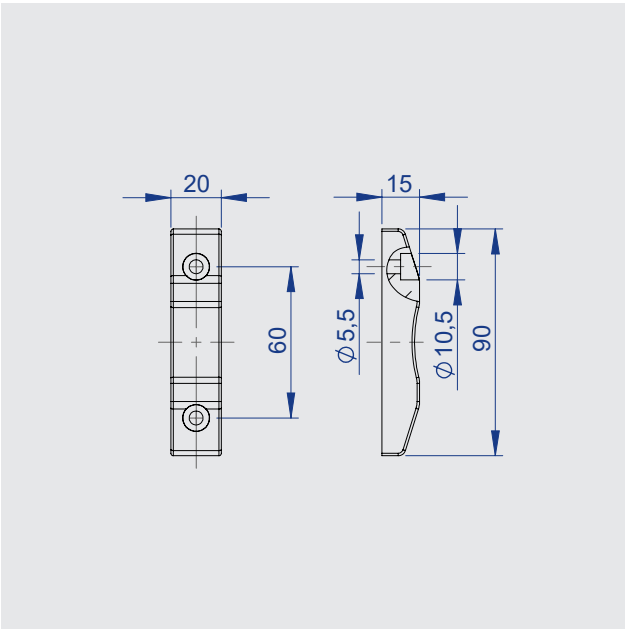
Handle coating: PVC

Accessories: Brass, plastic

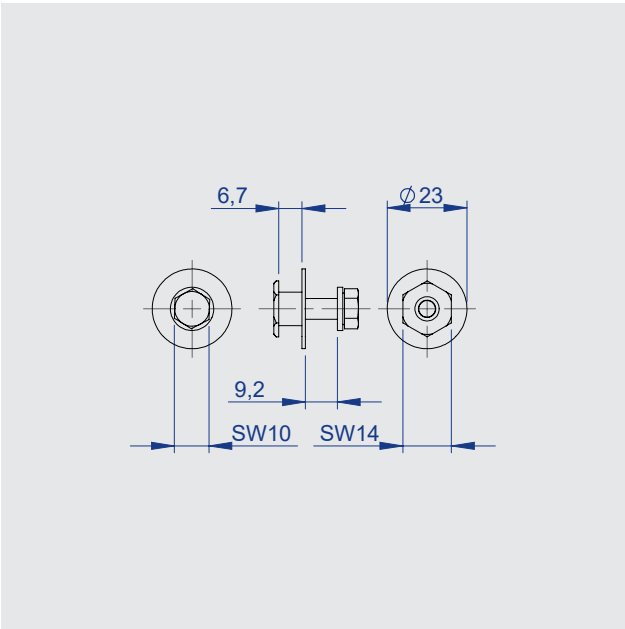
**Note:** Please also see the assembly instructions.



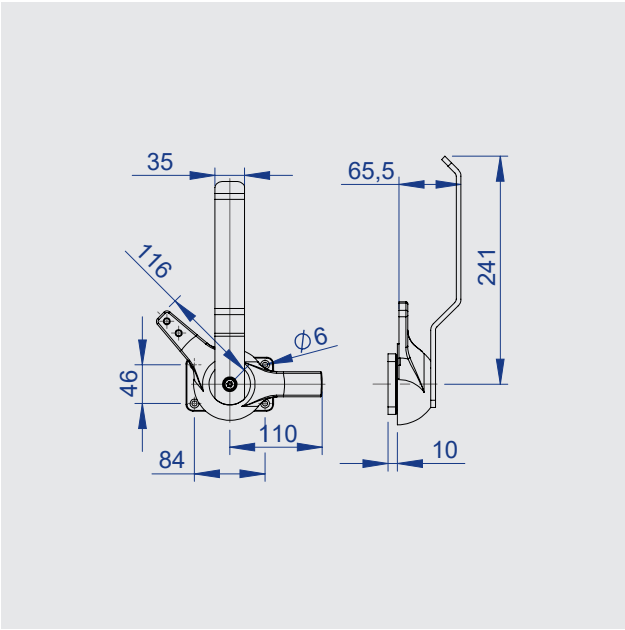
# Accessories



Frame element, brass	<b>7505-020065</b>
Frame element, plastic	<b>7505-020060</b>

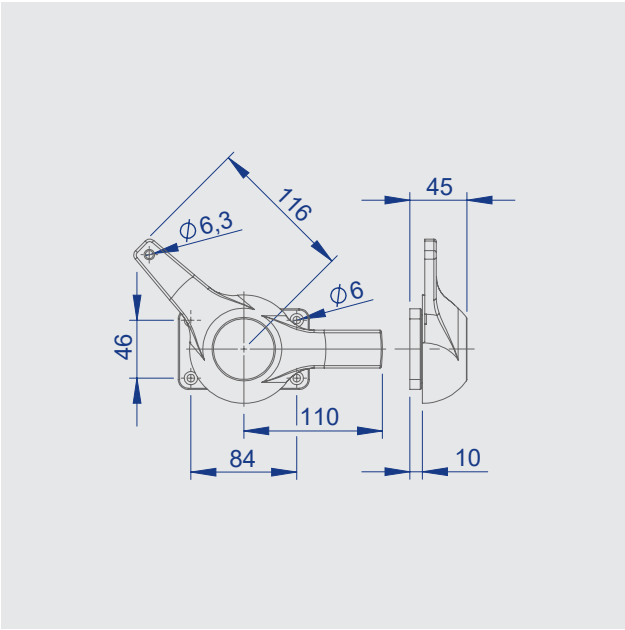


**7505-020081**  
Fastening bolt for push rod



**Inside handle for multi-point latching system**

right-closing	<b>7505-020014</b>
left-closing	<b>7505-020015</b>

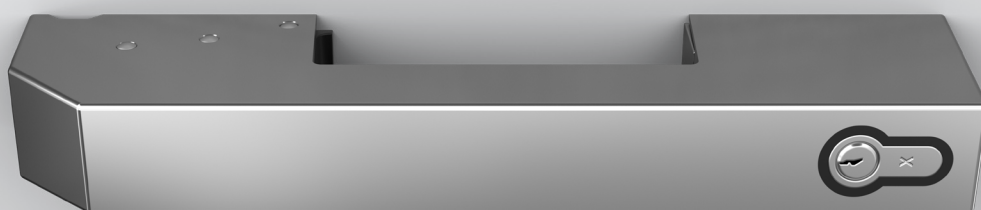


**Multi-point latching part, stainless steel**

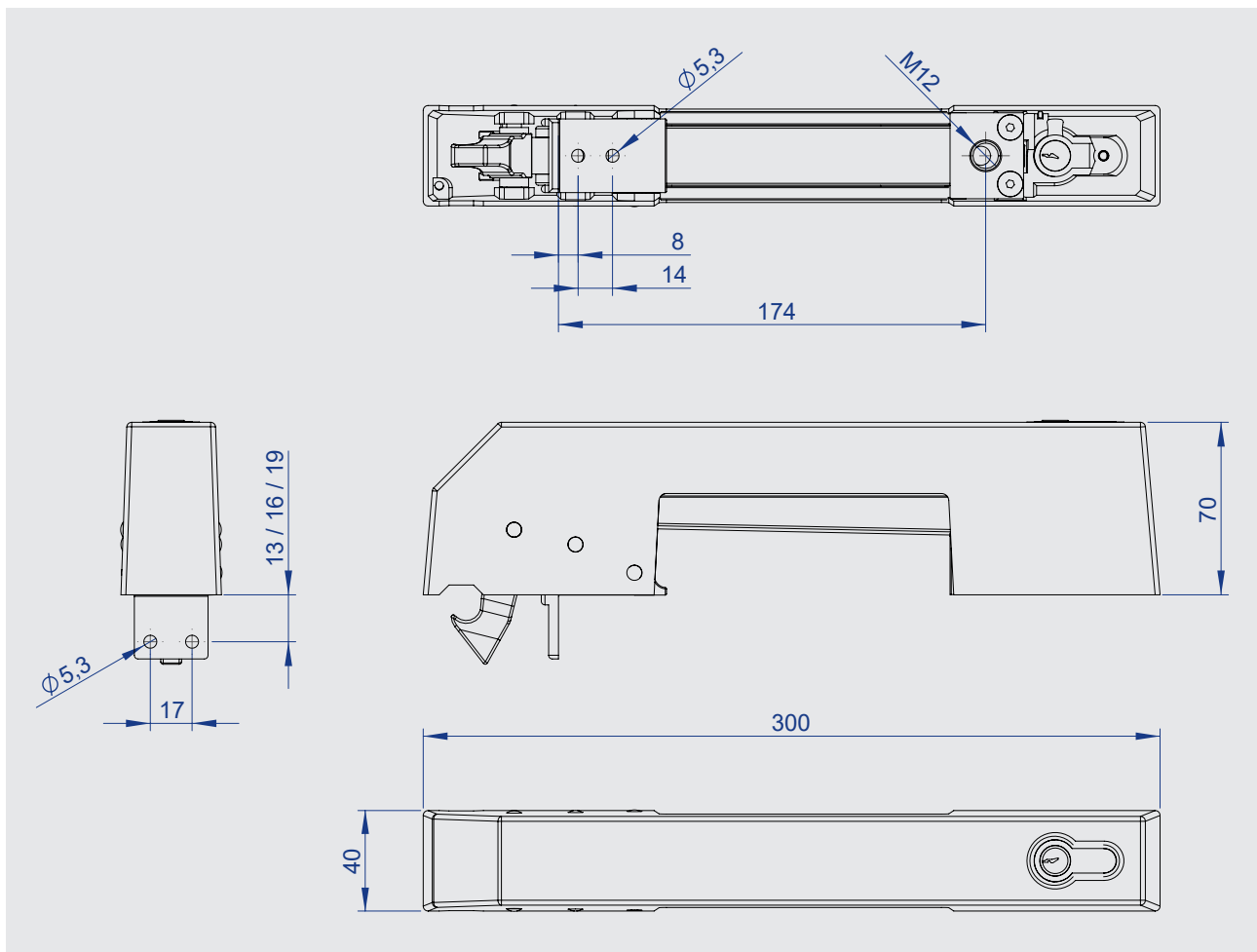
right-closing	<b>7505-020020</b>
left-closing	<b>7505-020021</b>



## Cold room door latch Series 6000 JUMBO



- Classic, self-closing latch
- Can be used for left- and right-hand doors
- Available with profile or standard cylinder
- Prepared variants for profile or KABA cylinders available



You can always keep cool because this self-closing latch for hinged doors doesn't even allow lukewarm breezes to penetrate cold rooms. The classic latch convinces with its high flexibility – in the figurative sense, because in reality it is extremely solid. It is suitable for both right- and left-handed use and is available with profile or standard cylinders. And if things need to be a tad more special, pre-prepared variants for profile or Kaba cylinders are also available. The inside handle also serves as a shield to protect against unintentional triggering of the emergency opener.

## Materials

Housing:	Die-cast zinc, chrome-plated or powder-coated
Strike:	Die-cast zinc, chrome-plated or powder-coated
Catch:	Die-cast zinc, zinc-plated
Release bar:	Plastic
Mounting plate:	Die-cast zinc, cathodic dip coated (CDC)
Pins:	Stainless steel
Inside handle:	Stainless steel, powder-coated

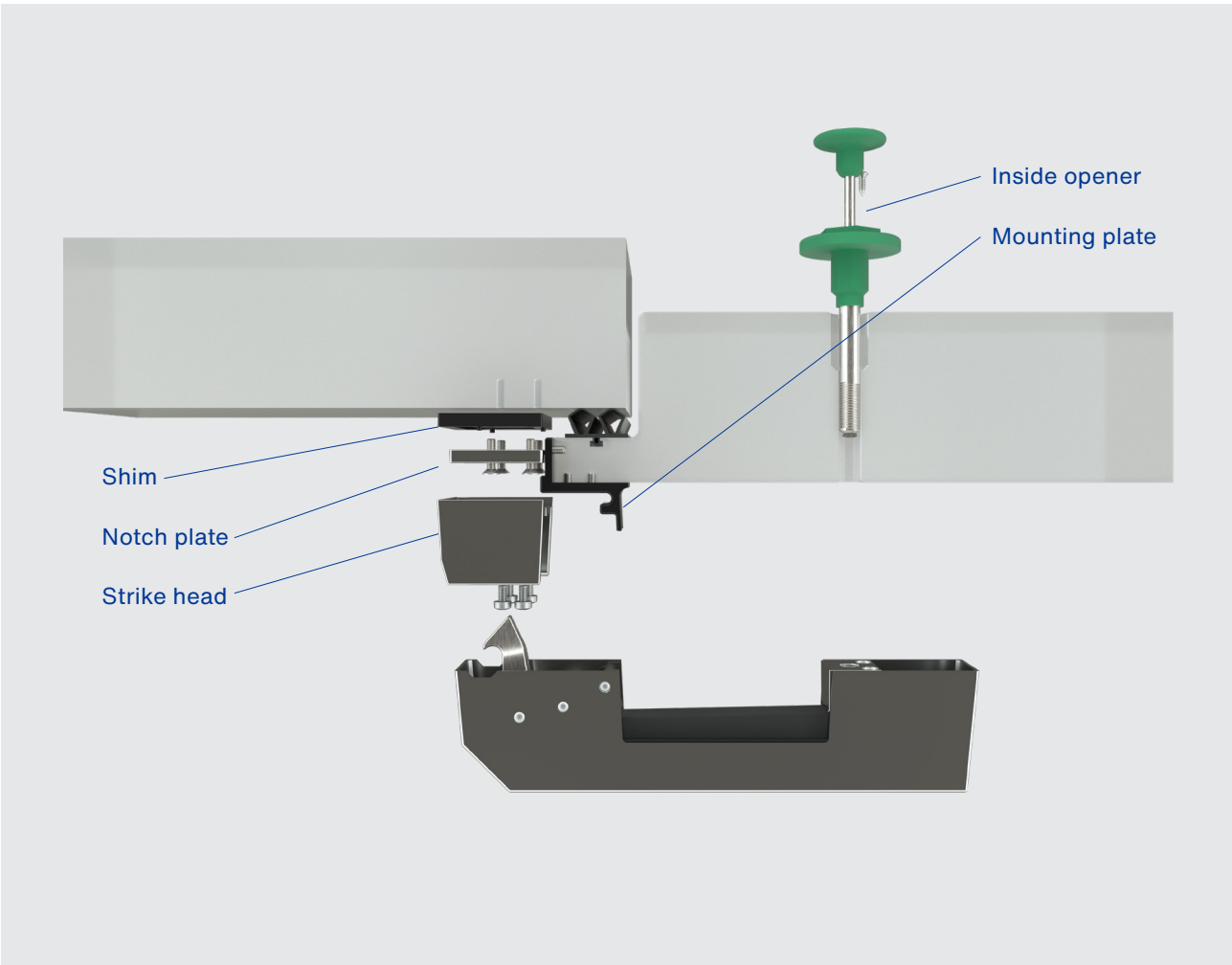
Other components: Stainless steel or steel, zinc-plated or plastic

Colors: chrome, gray (RAL 7001)

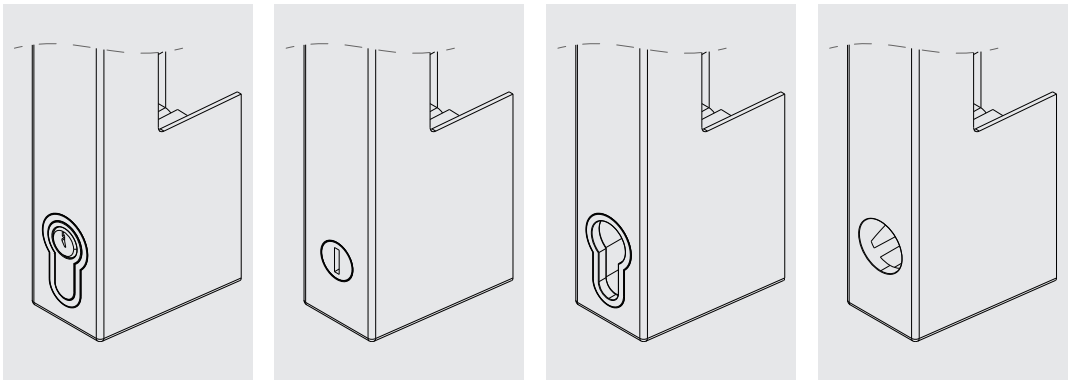
**Note:** Please also see the assembly instructions.



# System overview 6000



## Jumbo handle variants



	with profile cylinder	with standard cylinder (P10)	prepared for profile cylinder	prepared for KABA cylinder
chrome-plated	<b>6000-020695</b>	<b>6000-020893</b>	<b>6000-020551</b>	6000-020559
gray (RAL 7001)	<b>6000-020696</b>	<b>6000-020894</b>	<b>6000-020550</b>	6000-020558

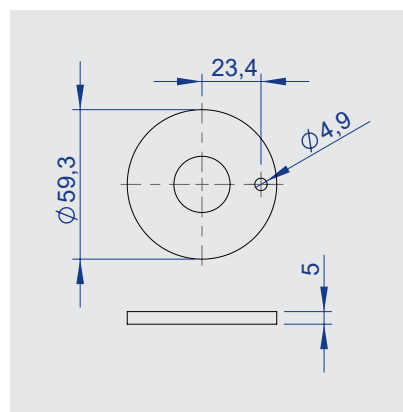
Reed-Variant on request



## Inside opener

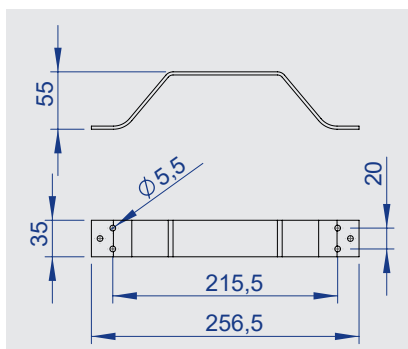


T = 40-56 mm	<b>6000-020530</b>
T = 60-76 mm	<b>6000-020531</b>
T = 76-92 mm	<b>6000-020532</b>
T = 92-108 mm	<b>6000-020533</b>
T = 108-124 mm	<b>6000-020534</b>
T = 124-140 mm	<b>6000-020535</b>
T = 140-156 mm	<b>6000-020536</b>
T = 156-172 mm	<b>6000-020537</b>

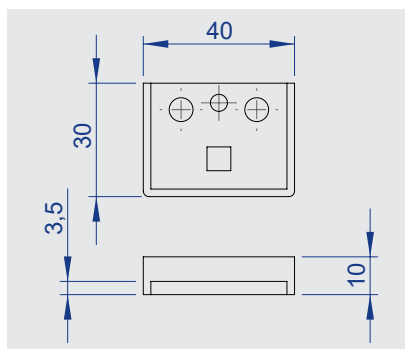


**6000-020615**  
Shim for inside opener, 5mm

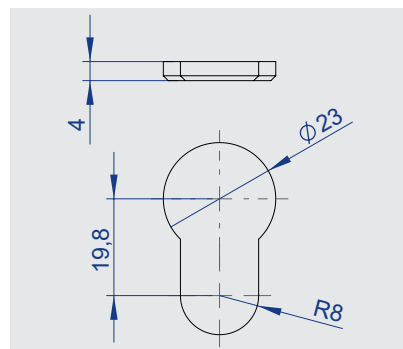
## Accessories



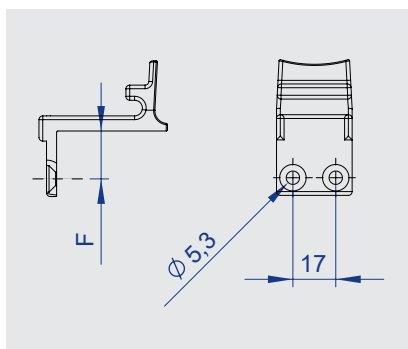
Inside handle, green	<b>6000-020003</b>
Inside handle, blank	<b>6000-020002</b>



**6000-020754**  
Shim for inside handle, 6,5mm

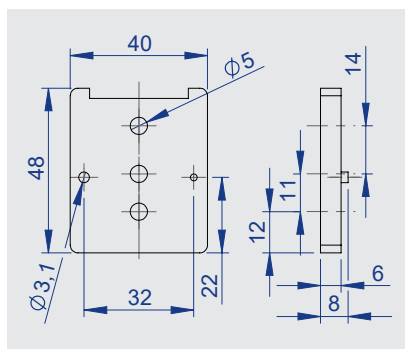


**6000-020556**  
Shield for non-lockable variants

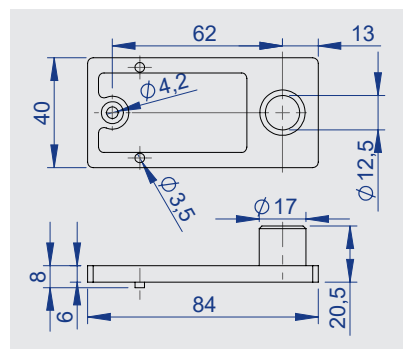


**Mounting plate, F mm**

F = 13mm	<b>6000-020699</b>
F = 16mm	<b>6000-020700</b>
F = 19mm	<b>6000-020701</b>



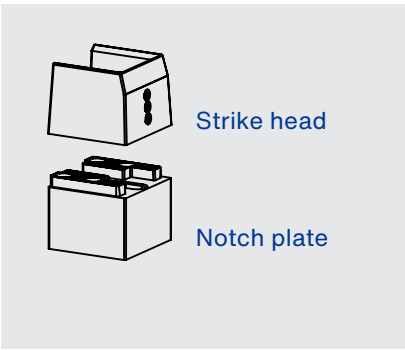
**6000-020905**  
Shim for mounting plate, 6 mm



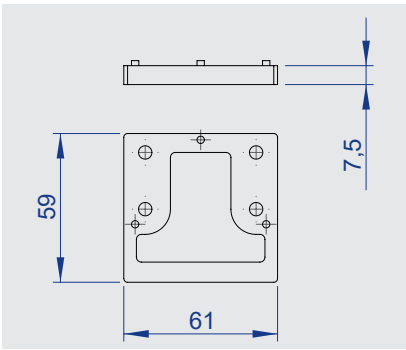
**6000-020906**  
Shim for outside handle, 6 mm

Variants for flush doors on request

# Strike

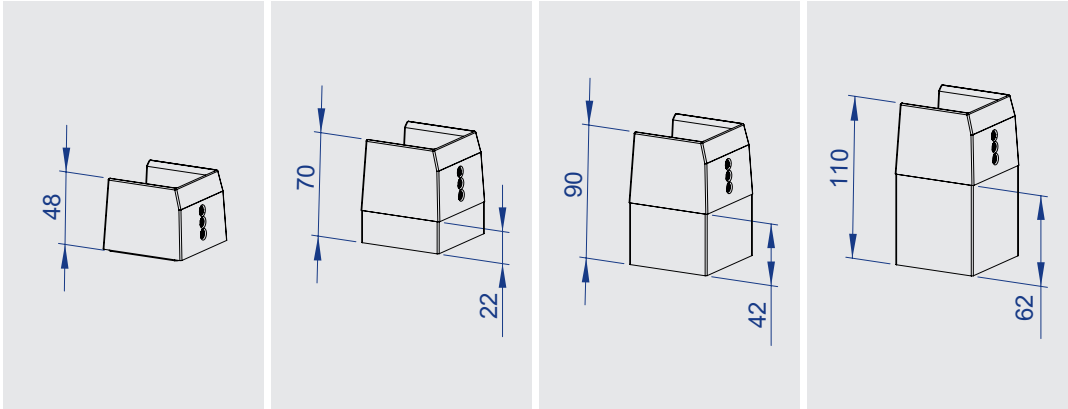


The strike unit consists of two parts. The strike head and the notch plate. The strike itself is located inside the strike head and can be used to adjust the height by 14 mm. For different heights, various notch plates are available.

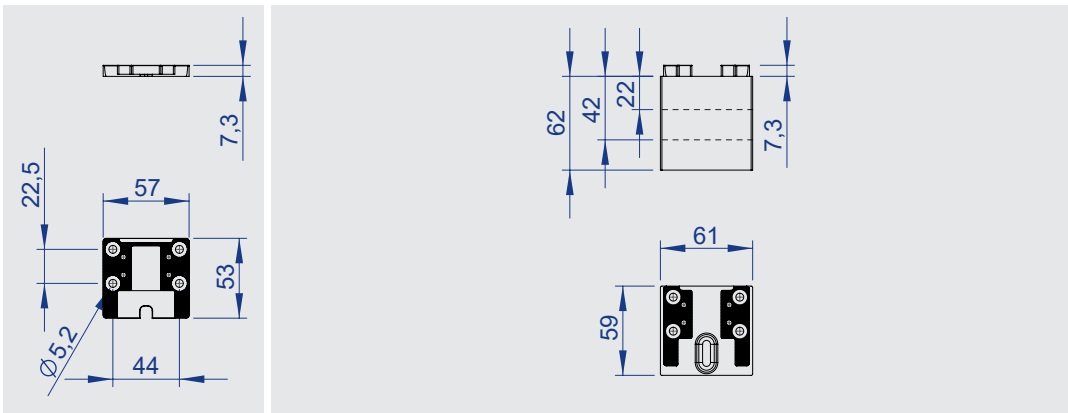


**6000-020719**  
Shim, plastic, 7,5 mm

## Strike table Offset (S)



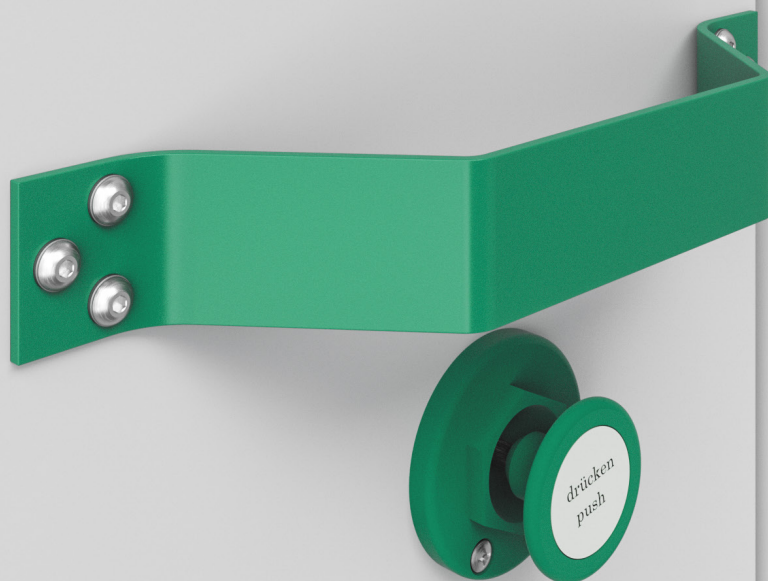
	Strike head & Notch plate No. 1	Strike head & Notch plate No. 2	Strike head & Notch plate No. 3	Strike head & Notch plate No. 4
without Shim	S = 30 - 44 mm	S = 51 - 65 mm	S = 71 - 85 mm	S = 91 - 105 mm
with 1x Shim	S = 37,5 - 51,5 mm	S = 58,5 - 72,5 mm	S = 78,5 - 92,5 mm	S = 98,5 - 112,5 mm



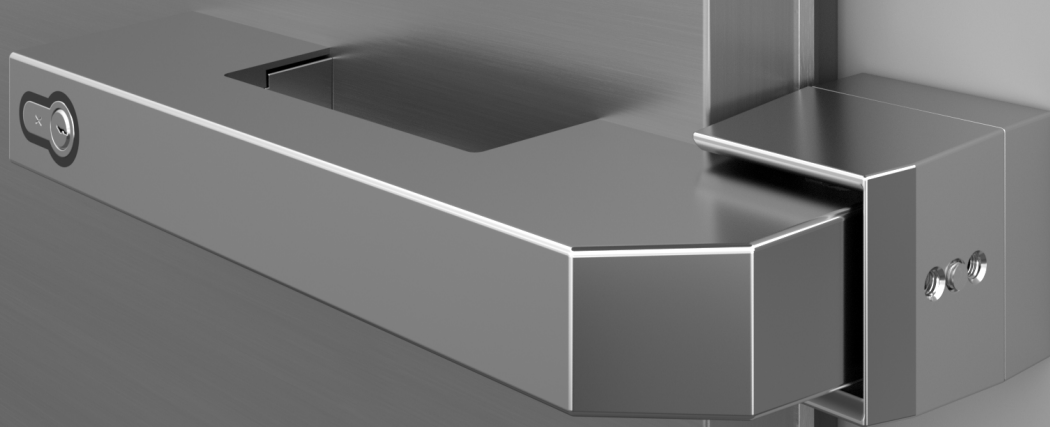
	Strike head & Notch plate No. 1	Strike head & Notch plate No. 2	Strike head & Notch plate No. 3	Strike head & Notch plate No. 4
chrome	<b>6000-020702</b>	<b>6000-020705</b>	6000-020708	6000-020711
gray (RAL 7001)	<b>6000-020720</b>	<b>6000-020723</b>	6000-020726	6000-020729


**Set table**

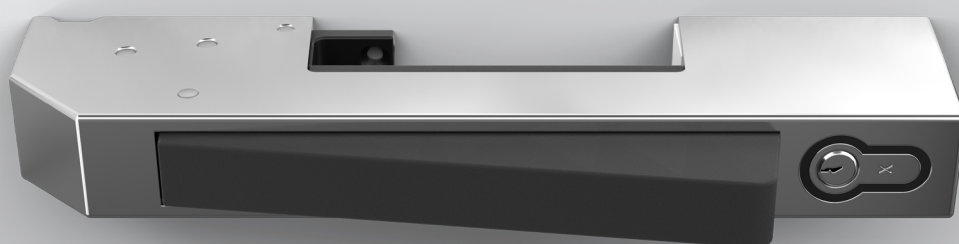
	Shim	Strike head & Notch plate No. 1	Strike head & Notch plate No. 2	Strike head & Notch plate No. 3	Strike head & Notch plate No. 4
<b>6000-020702 (chrome)</b> <b>6000-020720 (gray RAL 7001)</b>		X			
6000-020703 (chrome) 6000-020721 (gray RAL 7001)	X	X			
<b>6000-020705 (chrome)</b> <b>6000-020723 (gray RAL 7001)</b>			X		
6000-020706 (chrome) <b>6000-020724 (gray RAL 7001)</b>	X		X		
6000-020708 (chrome) 6000-020726 (gray RAL 7001)				X	
6000-020709 (chrome) <b>6000-020727 (gray RAL 7001)</b>	X			X	
6000-020711 (chrome) 6000-020729 (gray RAL 7001)					X
6000-020712 (chrome) 6000-020730 (gray RAL 7001)	X				X



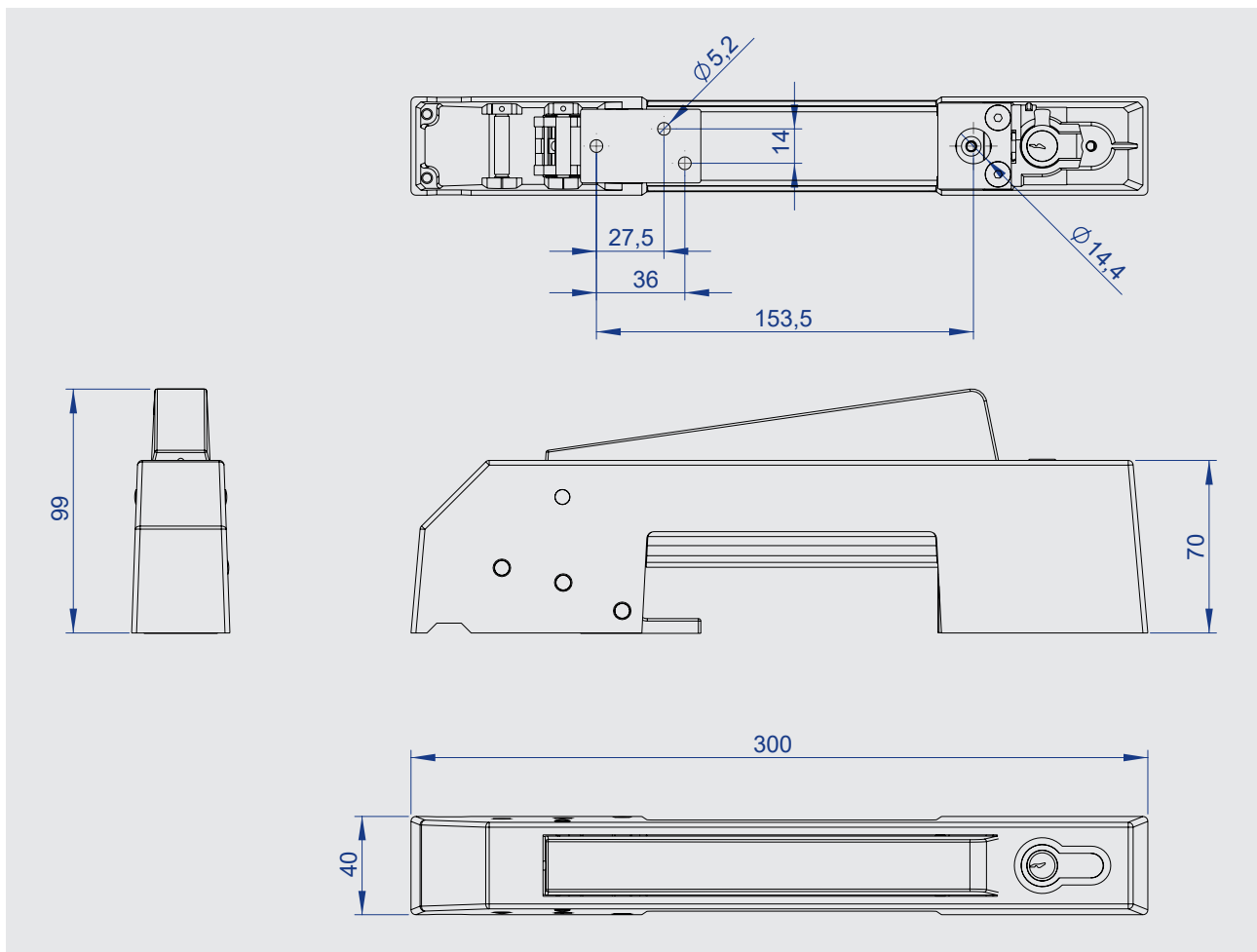




## Cold room door latch Series 6002 JUMBO



- Outside latch for cold room doors opening to the inside
- Lockable, with profile cylinder
- Associated inside opener is a non-locking, green variant of the 6000 Jumbo handle



The outside handle for cold room doors opening to the inside offers excellent latching capabilities. Cold rooms always remain reliably cold with this lockable closure including a profile cylinder - with „safety frost“ and double security: The associated inside opener, the green, non-lockable version of the 6000 handle, meaning it will always be able to open the door from the inside, regardless the locked-state from the outside.

### Materials

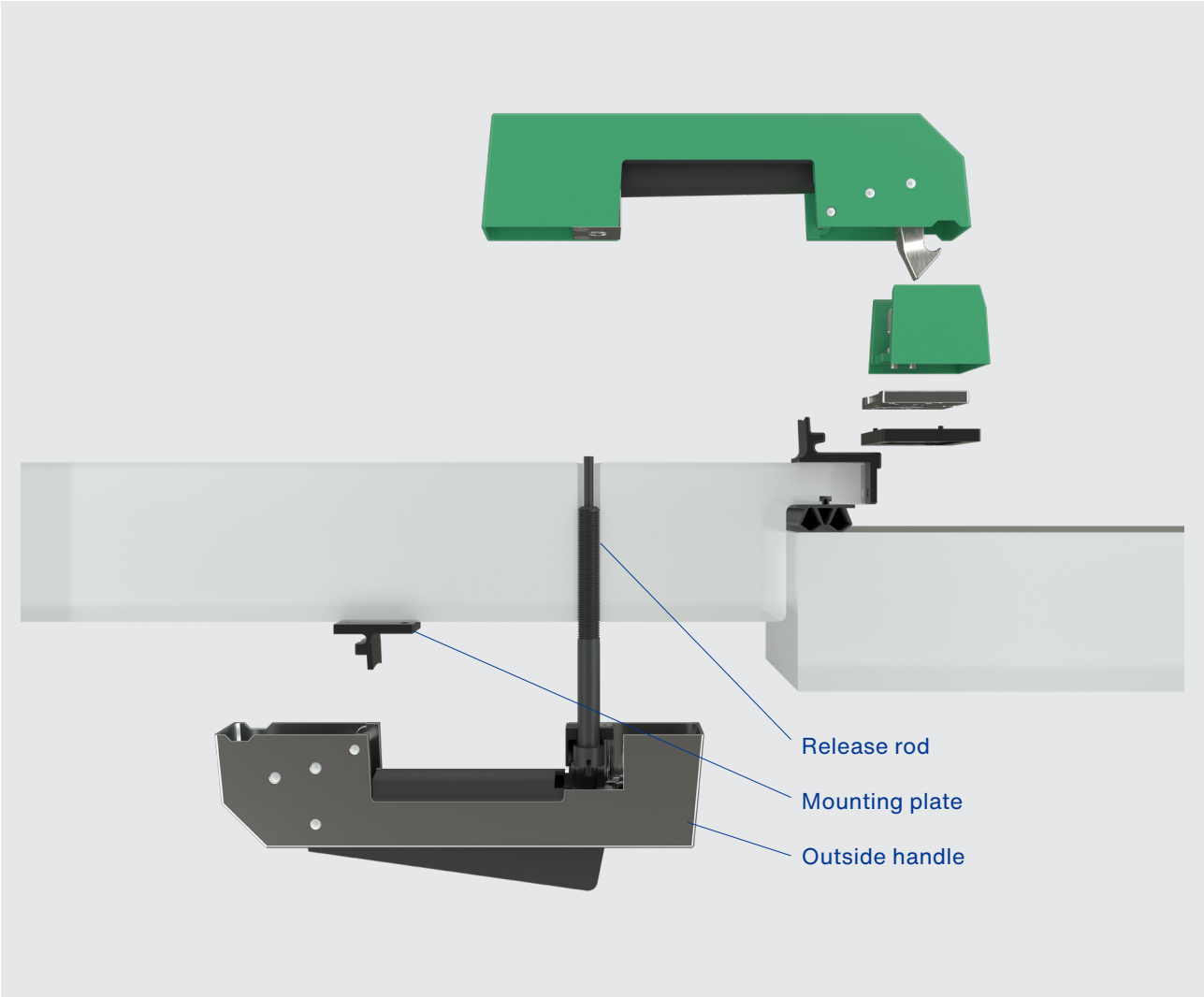
Housing:	Die-cast zinc, chrome-plated or powder-coated
Strike:	Die-cast zinc, chrome-plated or powder-coated
Catch:	Die-cast zinc, zinc-plated
Release bar:	Plastic
Mounting plate:	Die-cast zinc, cathodic dip coated (CDC)
Pins:	Stainless steel

Other components: Stainless steel or steel, zinc-plated or plastic

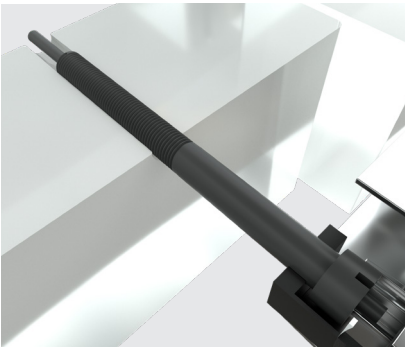
Colors: chrome,  
Inside handle: green (RAL 6024)

**Note:** Please also see the assembly instructions.

# System overview 6002 for doors opening to the inside

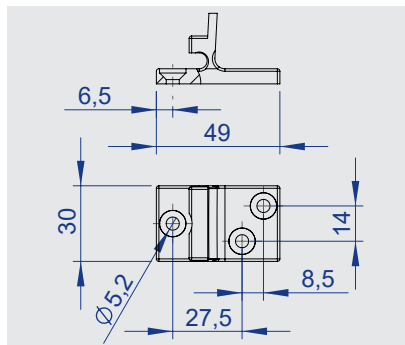
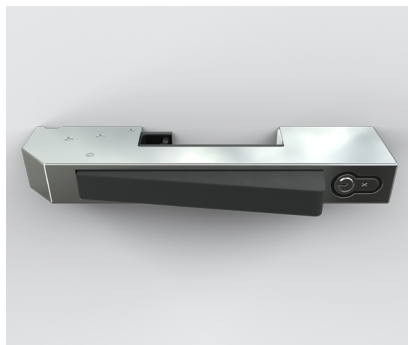


## Release rod



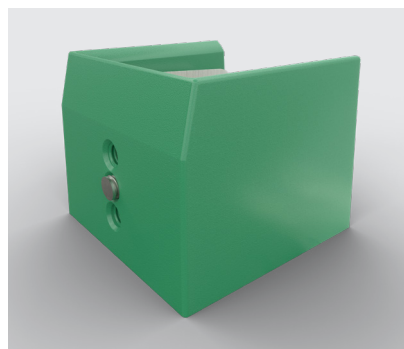
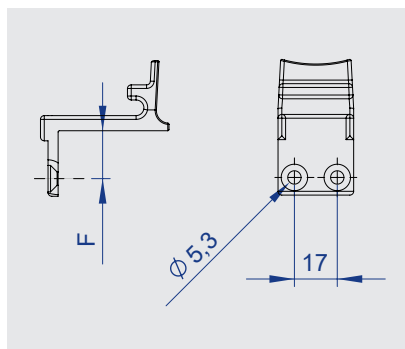
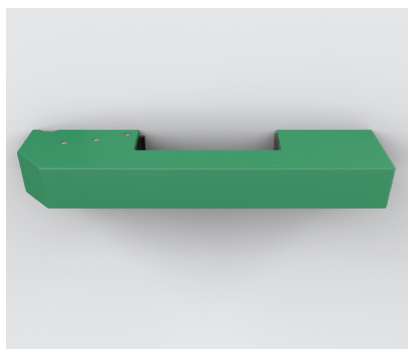
	Screw M14, plastic	Release rod Ø 6.3mm, plastic
Door thickness (T)	Length (without head)	Length
max. 120 mm	150 mm	215 mm
min. 60 mm	90 mm	155 mm

For door thicknesses between max. 120 mm and min. 60 mm, cut the screw and the release rod to the appropriate length.



**6002-020675**  
Outside handle  
(without mounting plate)

**6000-020678**  
Mounting plate



**6002-020674**  
Inside handle, green (RAL 6024)

The inside handle is a non-locking, green variant of the 6000 Jumbo handle.

**Mounting plate, F mm**

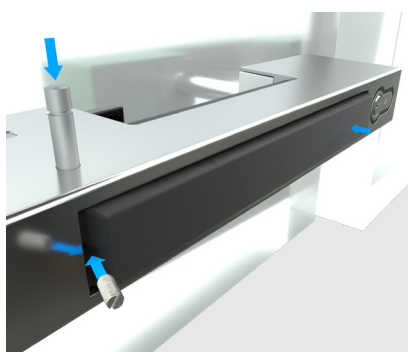
F = 13 mm	<b>6000-020699</b>
F = 16 mm	<b>6000-020700</b>
F = 19 mm	<b>6000-020701</b>

**6002-020676**  
Strike, green (RAL 6024)  
incl. Notch plate No. 1

See p. 40 for strike dimensions.

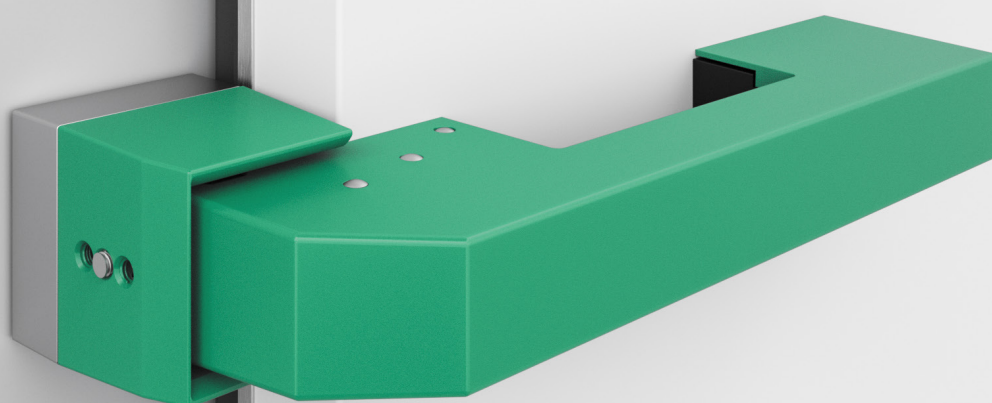
Other accessories same as series 6000 Jumbo see p. 39-40.

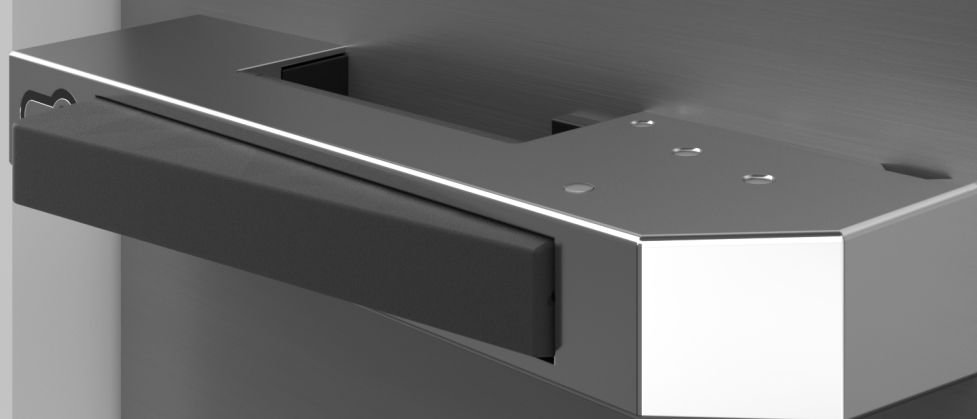
## Assembly instructions



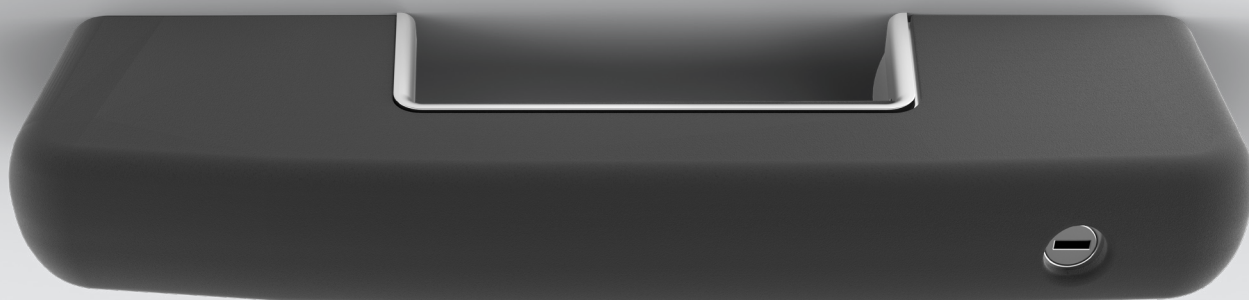
1. Push in the release bar all the way
2. Remove headless screw
3. Remove axle
4. Remove release bar
5. Guide screw release rod through the hole
6. Reassemble release bar (steps 1-3 in reverse order)



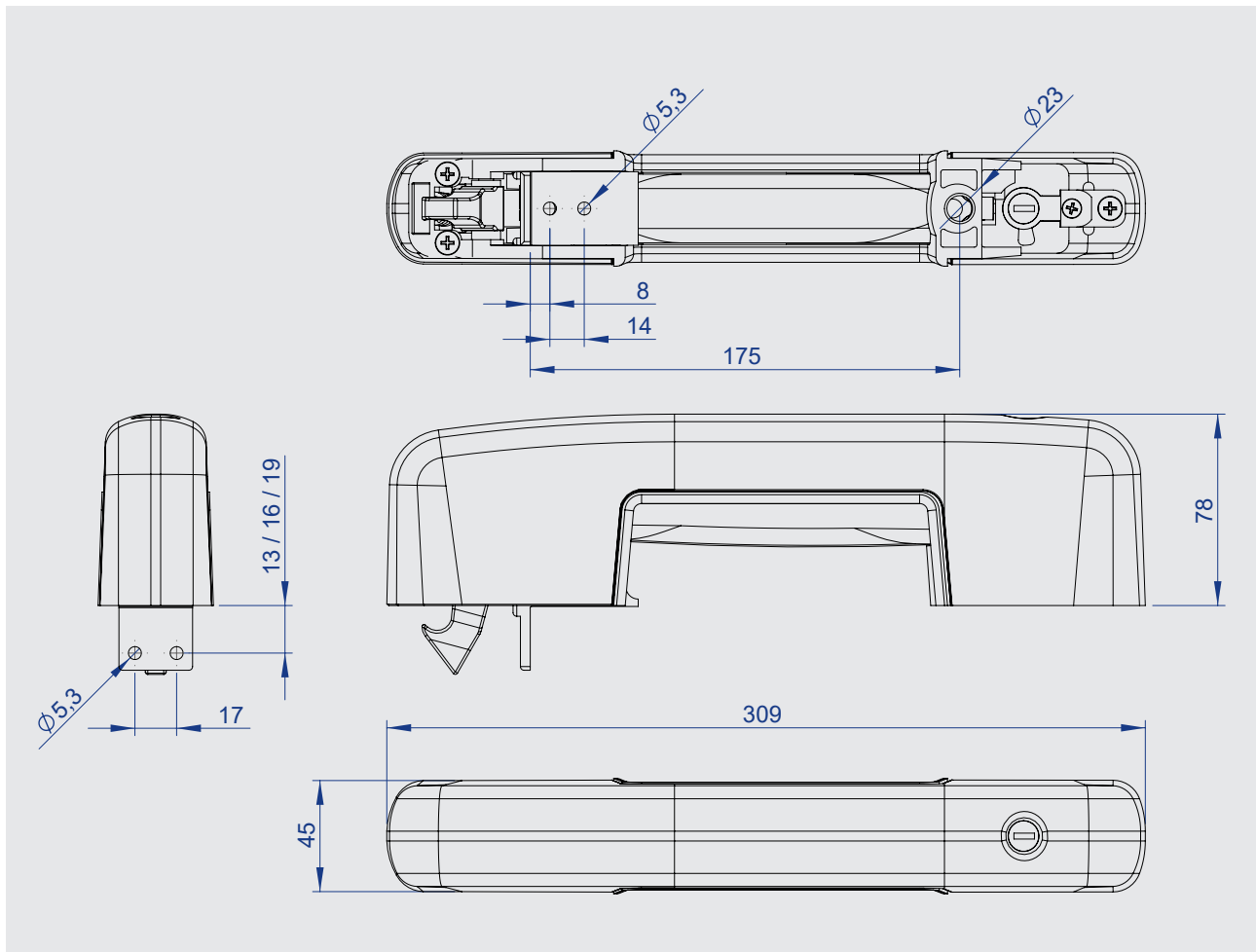




## Cold room door latch Series 6004 RONDO



- Self-closing latch for cold room doors
- Can be used for left- and right-hand doors
- Different colors available
- Inside opener and accessories analogous to 6000 Jumbo series
- Reed variant on request



You can twist and turn the door however you like, but with this latch, “closed” really means “closed”. The only thing left to discuss here is the color, as the handle is available in different shades. The self-closing latch for cold room doors can also be used for left- and right-hand doors and is even available as a reed variant on request. The associated inside opener and other accessories are all from the 6000 Jumbo series.

## Materials

Housing:	Plastic
Base:	Die-cast zinc, chrome-plated or cathodic dip coated (CDC)
Catch:	Die-cast zinc, zinc-plated
Release bar:	Plastic
Mounting plate:	Die-cast zinc, cathodic dip coated (CDC)

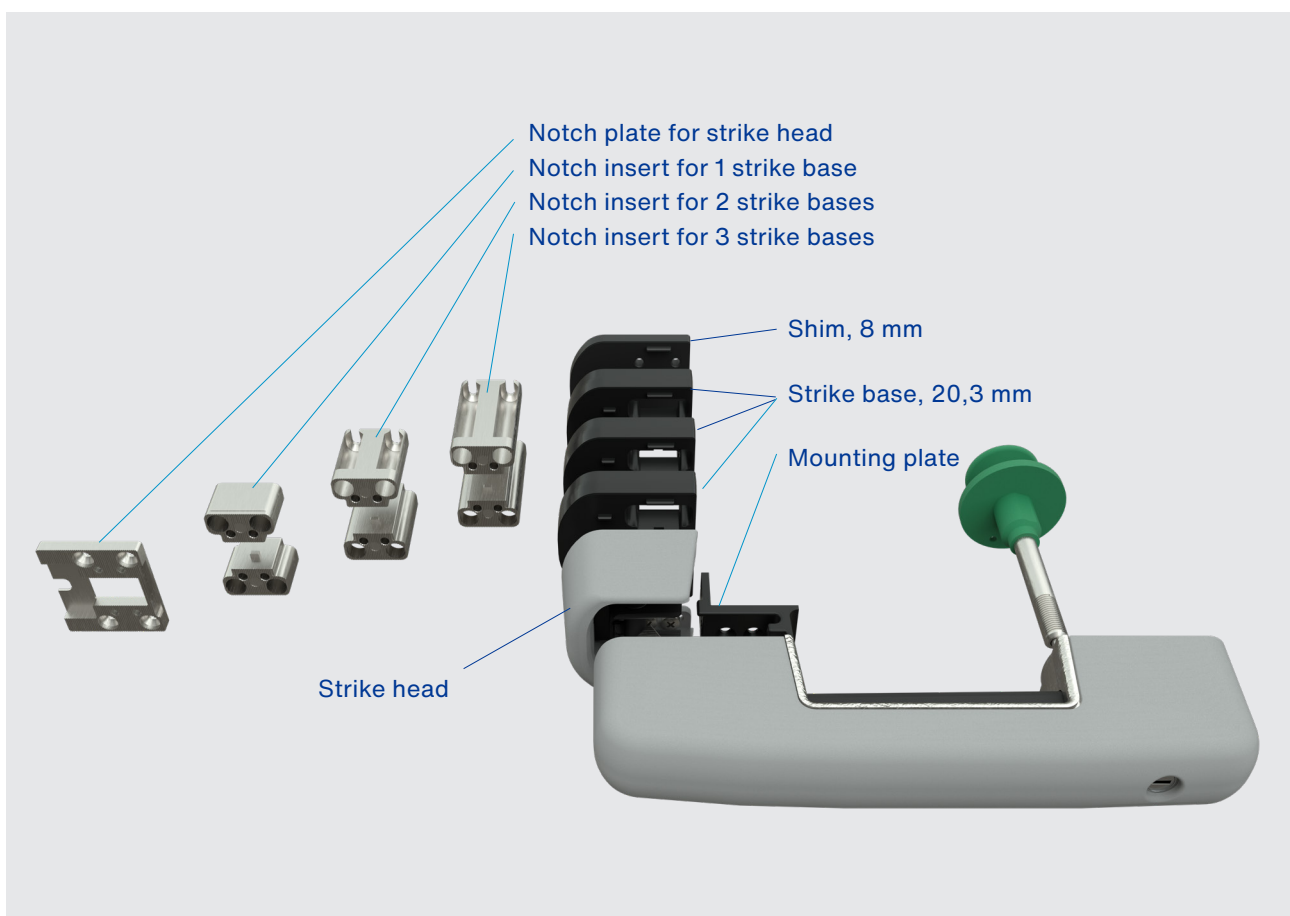
Strike head:	Die-cast zinc, powder-coted
Strike base:	Plastic
Notch pieces:	Die-cast zinc, zinc-plated

Pins:	Stainless steel
Inside handle:	Stainless steel, powder-coated

Other components: Die-cast zinc or steel, zinc-plated

Colors: black, gray, blue

## System overview



## Inside opener & accessories

The inside opener and accessories are analogous to Series 6000 Jumbo. See page 39





## Variants



**6004-021000**  
Latch  
Cap, plastic, black,  
Base, black



**6004-021001**  
Latch,  
Cap, plastic, black,  
Base, trowal chrome



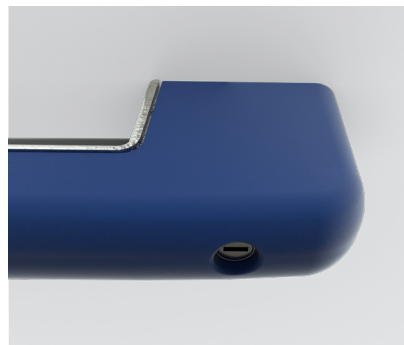
**6004-021010**  
Latch  
Cap, plastic, gray,  
Base, black



**6004-021011**  
Latch  
Cap, plastic, gray,  
Base, trowal chrome

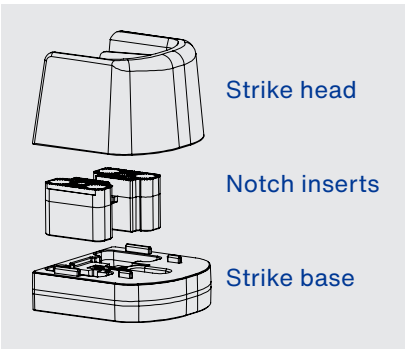


**6004-021020**  
Latch  
Cap, plastic, blue,  
Base, black

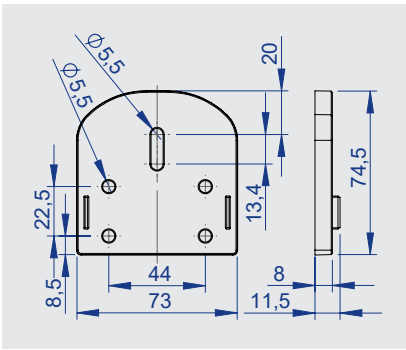


**6004-021021**  
Latch  
Cap, plastic, blue,  
Base, trowal chrome

# Strike

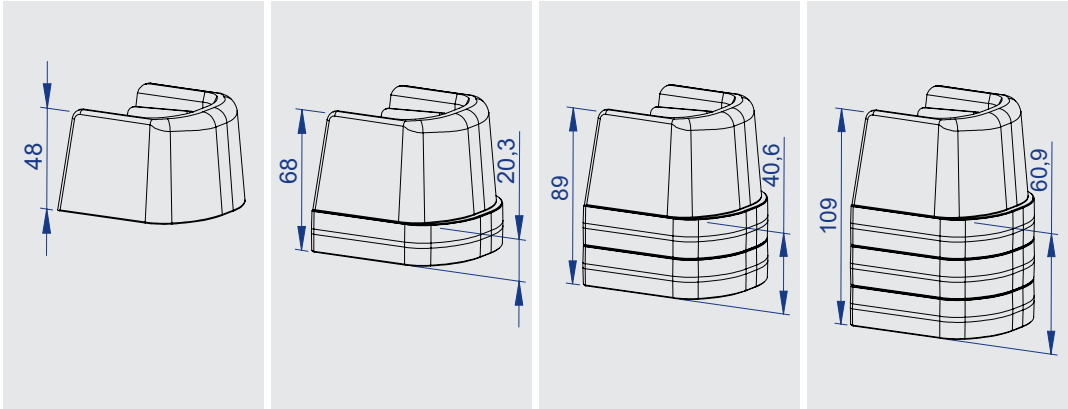


The strike consists of three parts. The strike head, the strike base and the notch inserts. The strike itself is located inside the strike head and can be adjusted in height by 14 mm. For other heights, up to three strike bases can be stacked on top of each other. Depending on how many strike bases are stacked, the corresponding notch inserts have to be chosen.

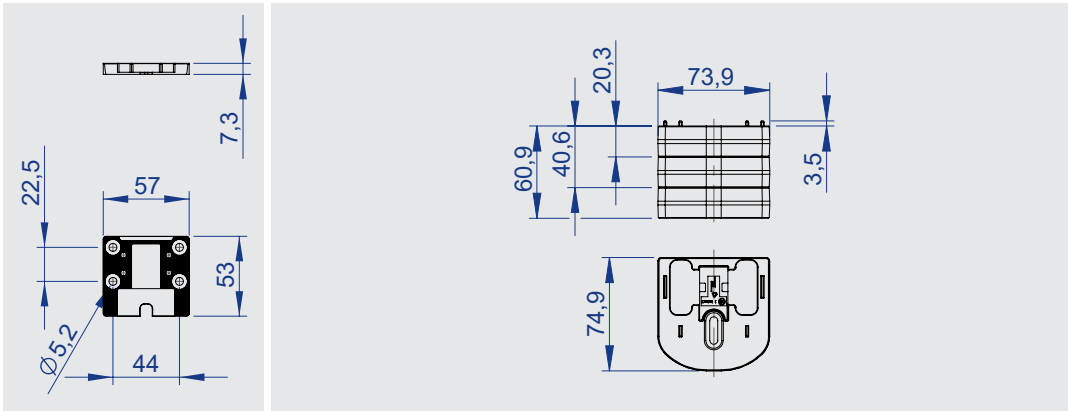


**6004-020010**  
Shim, plastic, 8 mm

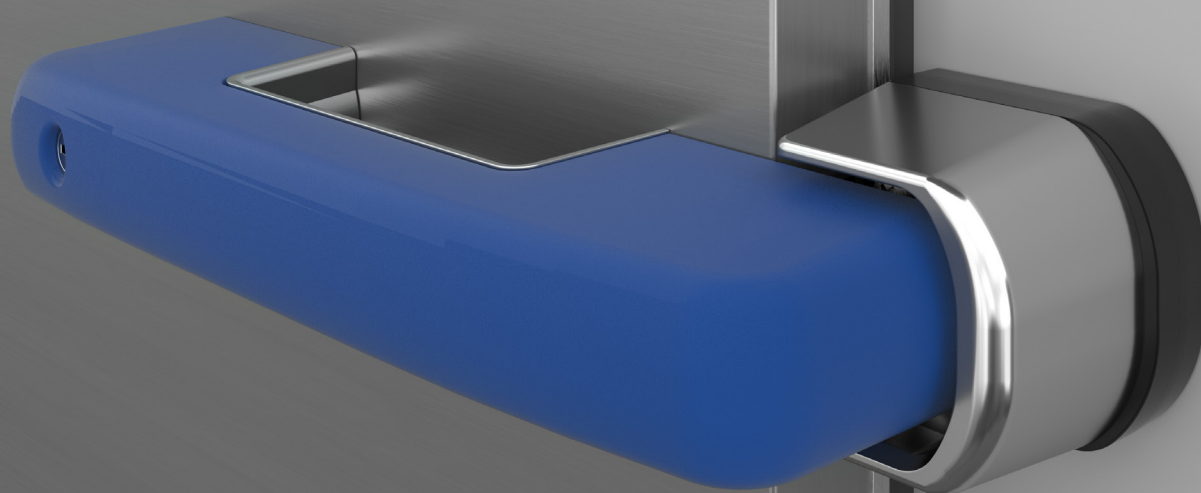
## Strike table Offset (S)



	Strike head & notch plate no. 1	Strike head & 1 strike base	Strike head & 2 strike bases	Strike head & 3 strike bases
Without shim	S = 32.5 - 47.5 mm	S = 52.8 - 67.8 mm	S = 73.1 - 88.1 mm	S = 93.4 - 108.4 mm
With 1x shim	S = 40.5 - 55.5 mm	S = 60.8 - 75.8 mm	S = 81.1 - 96.1 mm	S = 101.4 - 116.4 mm

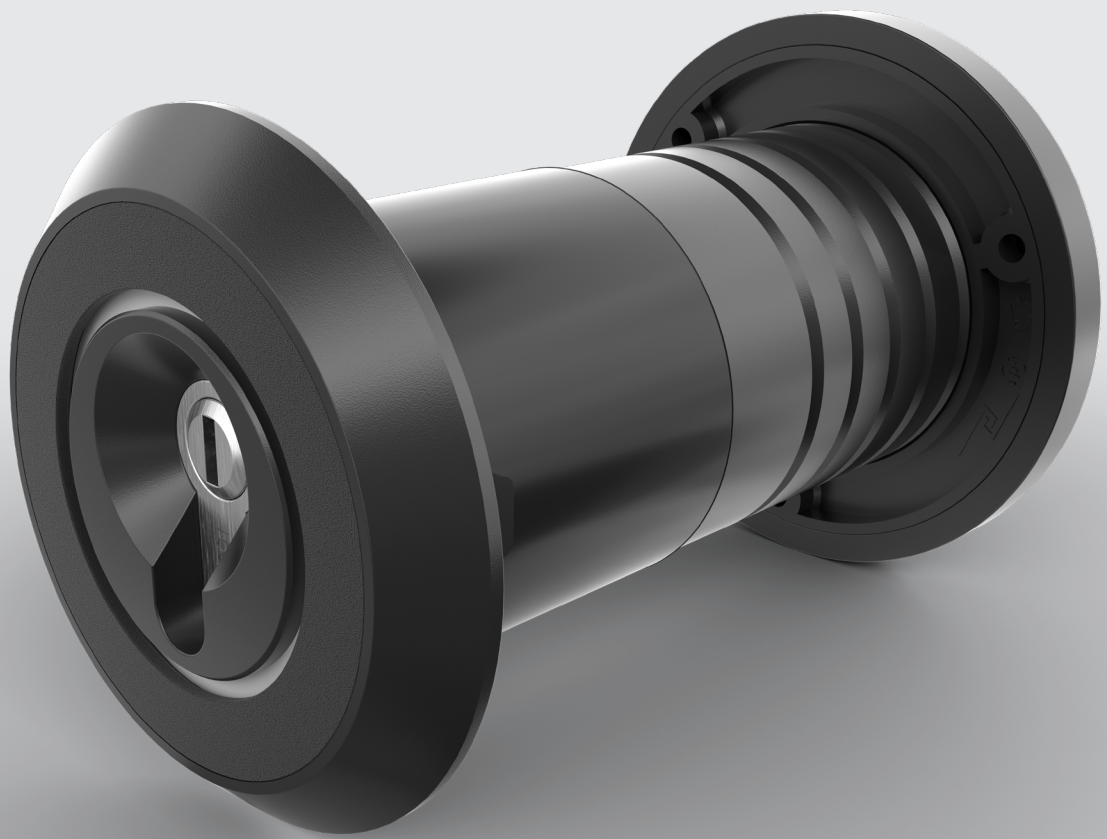


	Strike head & notch plate no. 1	Strike head & 1 strike base	Strike head & 2 strike bases	Strike head & 3 strike bases
cathodic dip coated (CDC)	<b>6004-020100</b>	<b>6004-020102</b>	6004-020104	6004-020106
Trowal chrome	6004-020110	6004-020112	6004-020114	6004-020116

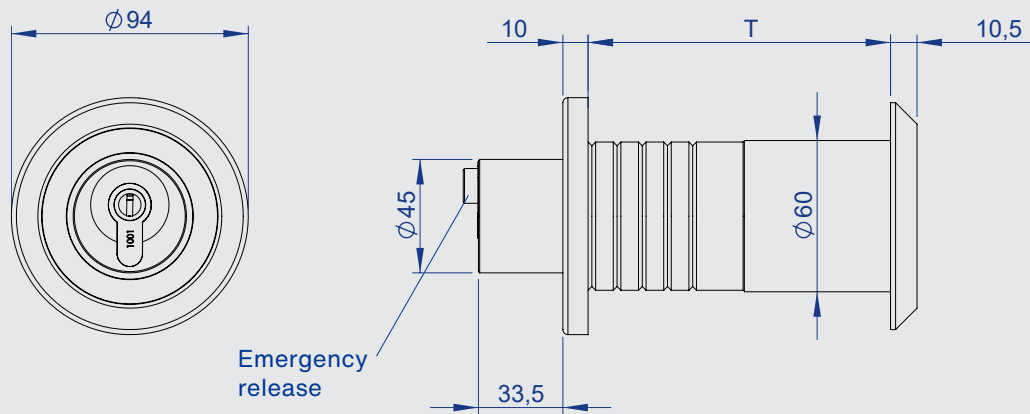


## Bolt latch

### Series 7150



- Robust gas-tight sliding door latch
- Gas-tight structure prevents freezing
- For door thickness from 80-160mm
- Locking system capable, Kaba-Version available
- With profile cylinder
- Also available as reed variant
- Pushbutton as emergency release on the inside



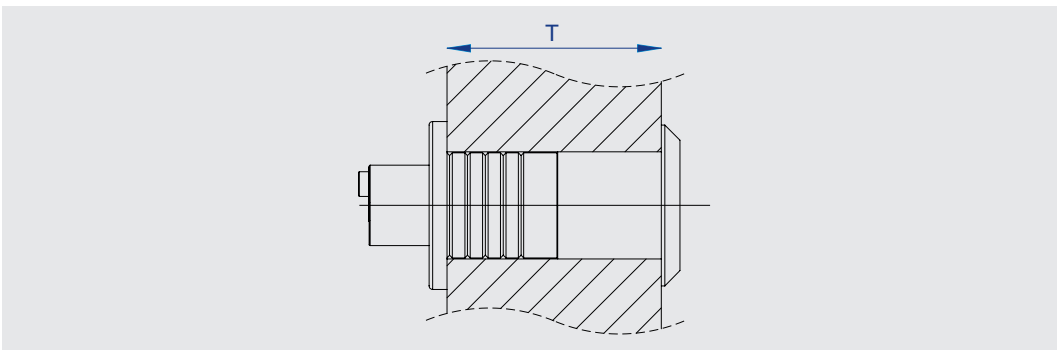
This sheer unbelievably robust sliding door latch lets nothing upset it. Especially not temperatures: The built-in seal minimizes air flow and ensures that the entire bolt latch, including the profile cylinder, does not freeze. Sounds good? It gets even better: This bolt latch is compatible with locking systems and can also be requested as a Kaba variant. As an emergency release of the lock, a pushbutton on the inside of the bolt latch is used. A reed version is also available, which can transmit the current state of the lock - open or closed.

## Materials

Main components: Plastic  
Springs: Spring steel  
Other components: Die-cast zinc, chrome-plated

**Note:** Please also see the assembly instructions.



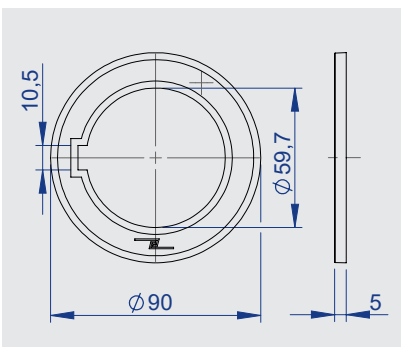


#### Bolt latch

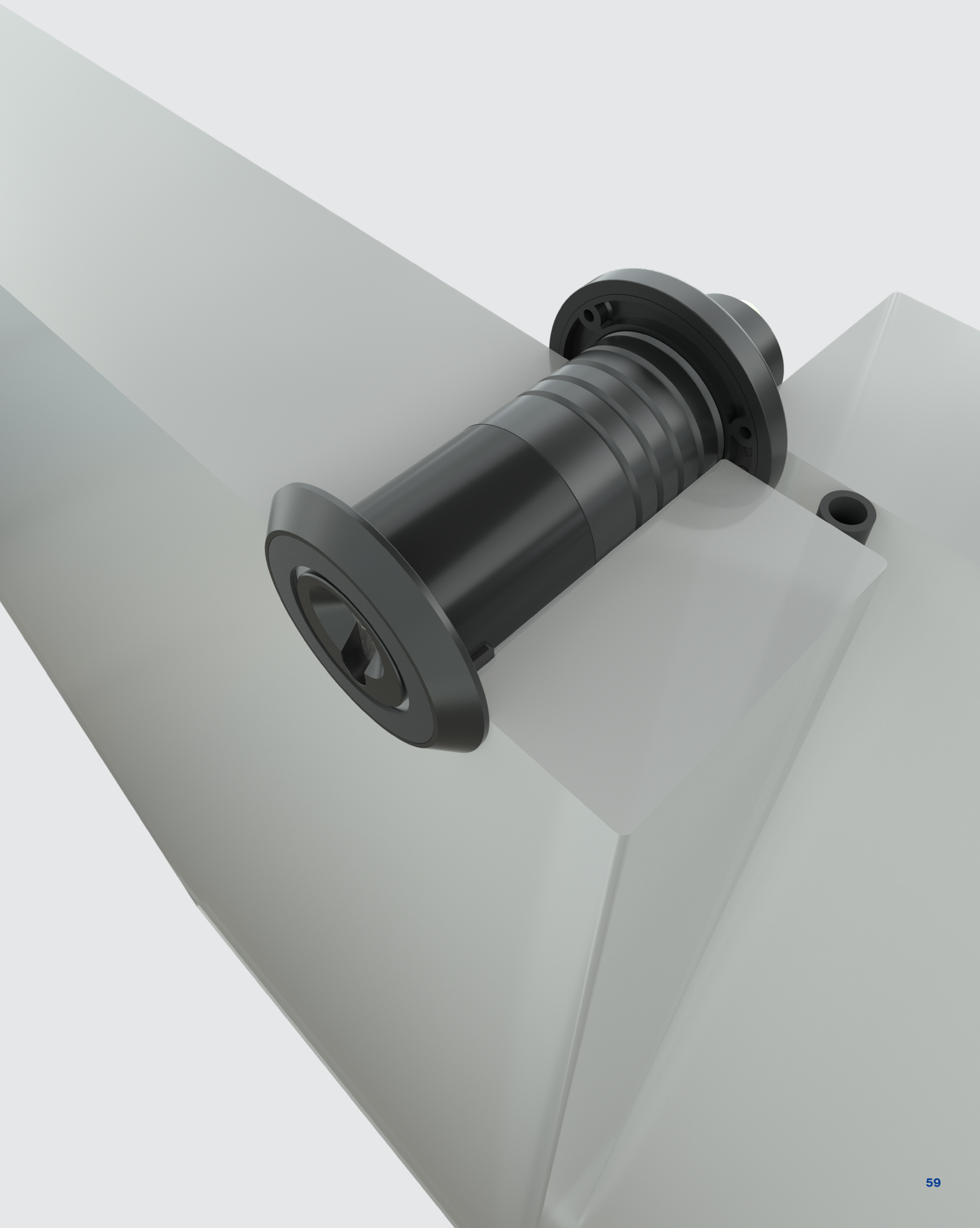
T = 80 mm	<b>7150-020080</b>
T = 100 mm	<b>7150-020100</b>
T = 120 mm	<b>7150-020120</b>
T = 140 mm	7150-020140
T = 160 mm	7150-020160

#### Bolt latch, reed variant, with 0.5 m Cable

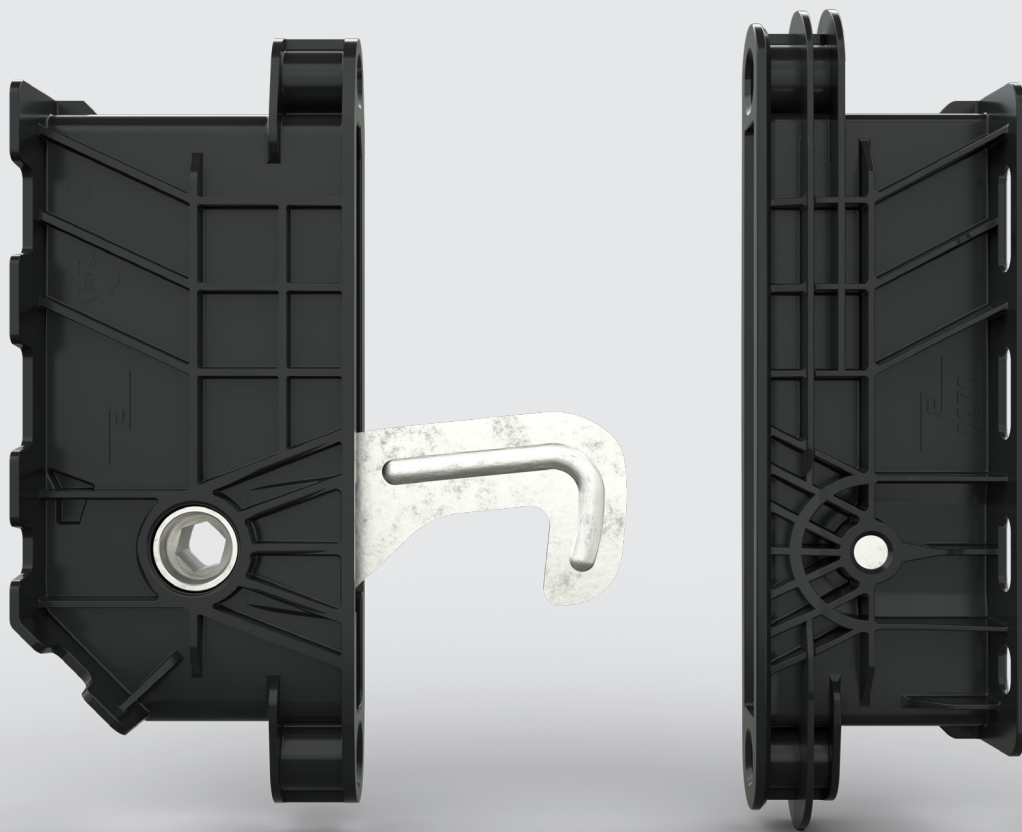
T = 80 mm	7150-020081
T = 100 mm	7150-020101
T = 120 mm	7150-020121
T = 140 mm	7150-020141
T = 160 mm	7150-020161



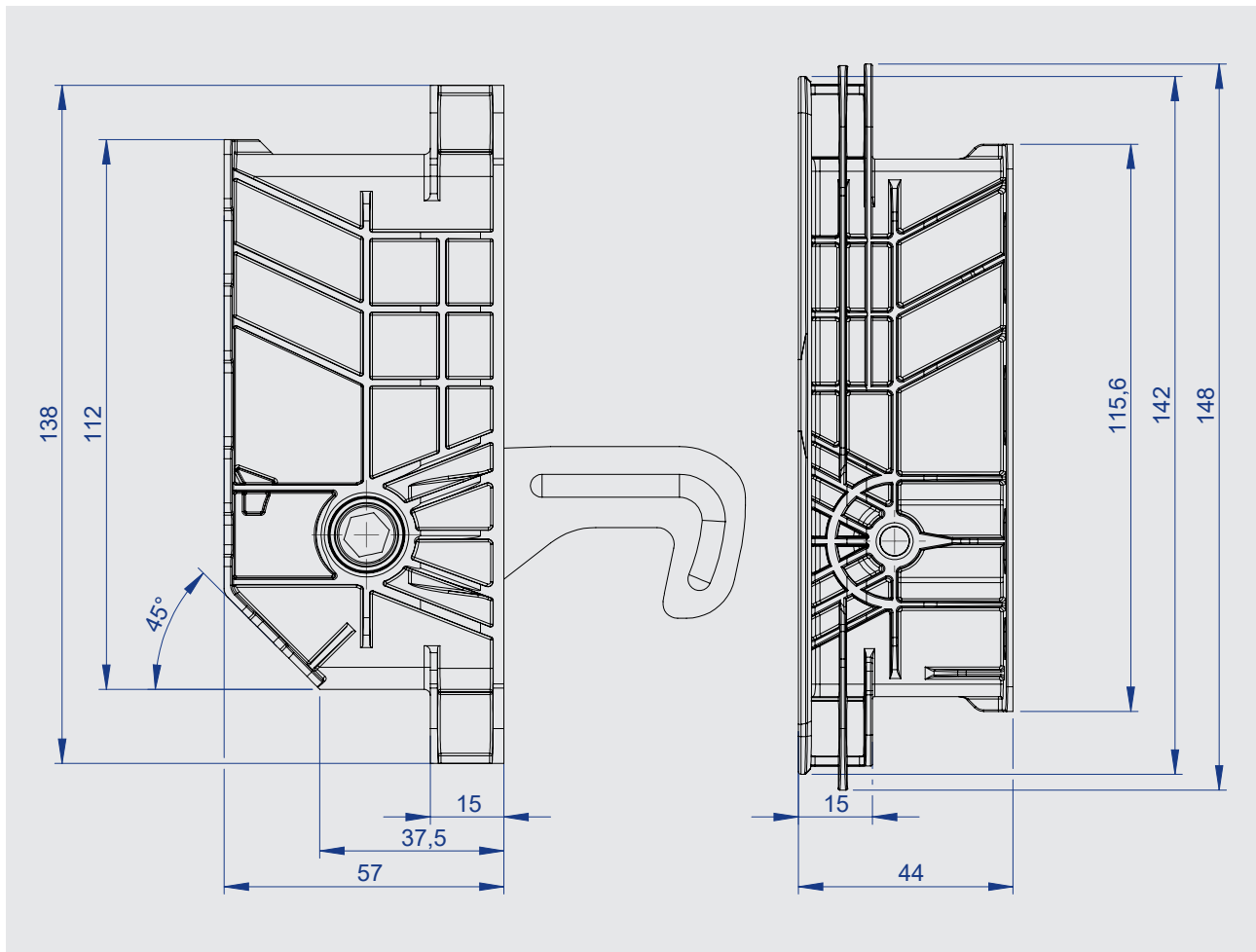
#### **7150-020005** Spacer ring, 5 mm



## Panel Fastener Series 0270



- Latching system for foamed components
- Constant tightening force due to eccentric gear
- Tightening hook transport secured
- Suitable for multiple assemblies and disassemblies



This fastener is suitable for all types of foamed panels and allows for multiple assemblies and disassemblies. During panel manufacture, a thin plastic skin prevents foam from entering the fastener through the hole for the hexagonal key. This skin can later be easily pierced with a hexagonal key.

Optional installation aids allow perfect positioning of the fastener and its counter part and also prevent foam from spilling into the fastener housing.

An eccentric gear provides a durable tightening force and security. Speaking of secure:

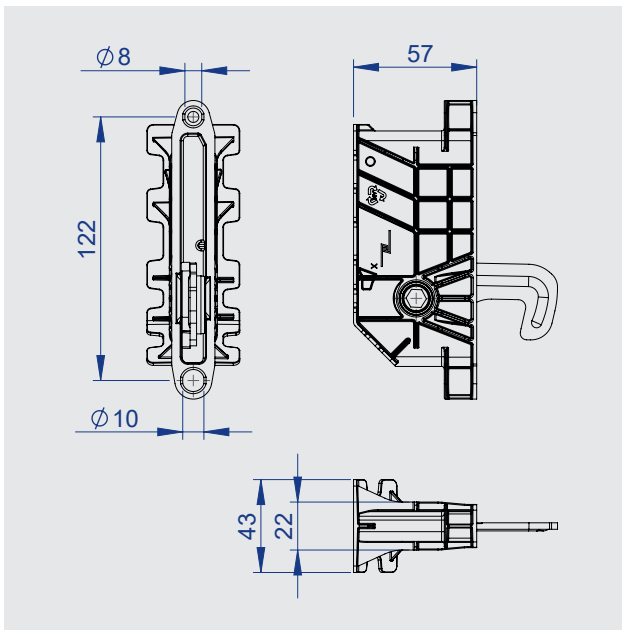
The tightening hook can be secured in place for transport.

## Materials

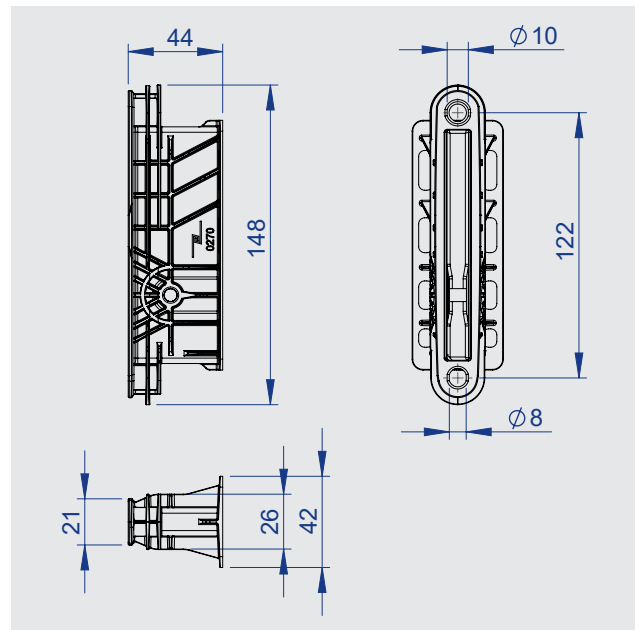
Housing:	Plastic
Hook:	Steel, zinc-plated
Eccentric gear:	Die-cast zinc
Bolt:	Steel, zinc-plated

**Note:** Please also see the assembly instructions.

## Panel Fastener



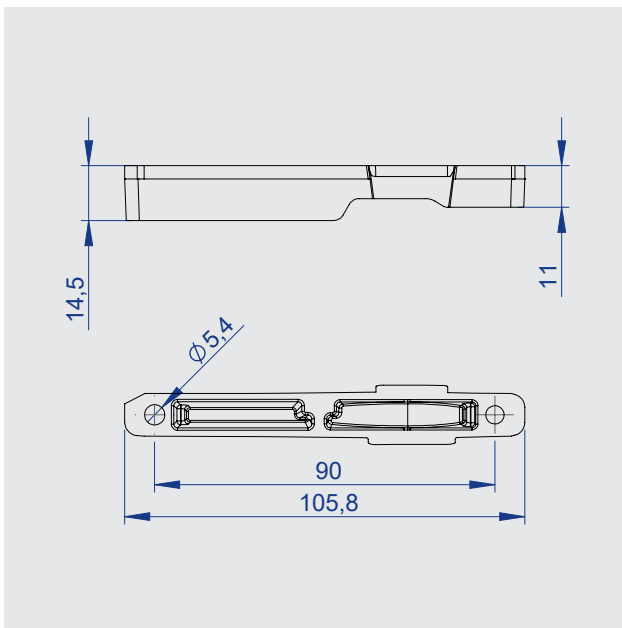
**0270-020001**  
Fastener



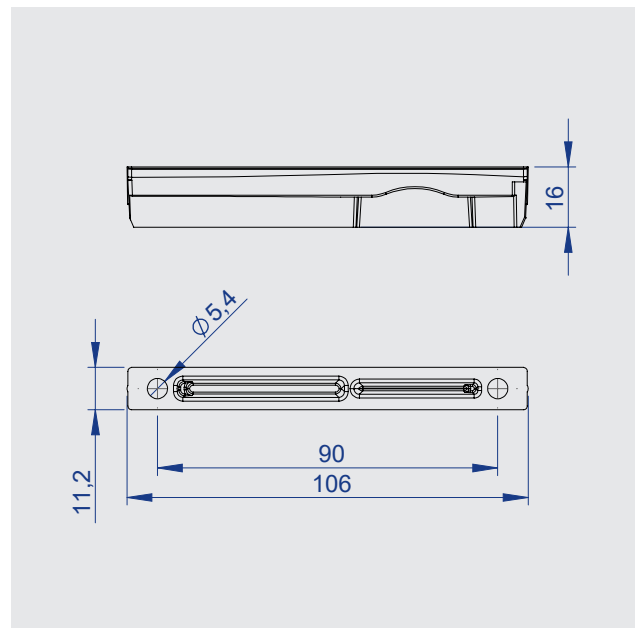
**0270-020010**  
Counter part

## Optional for installation aid

The installation aids allow the correct positioning of the fastener and its counter part and also prevent their housings from foam spilling into them.

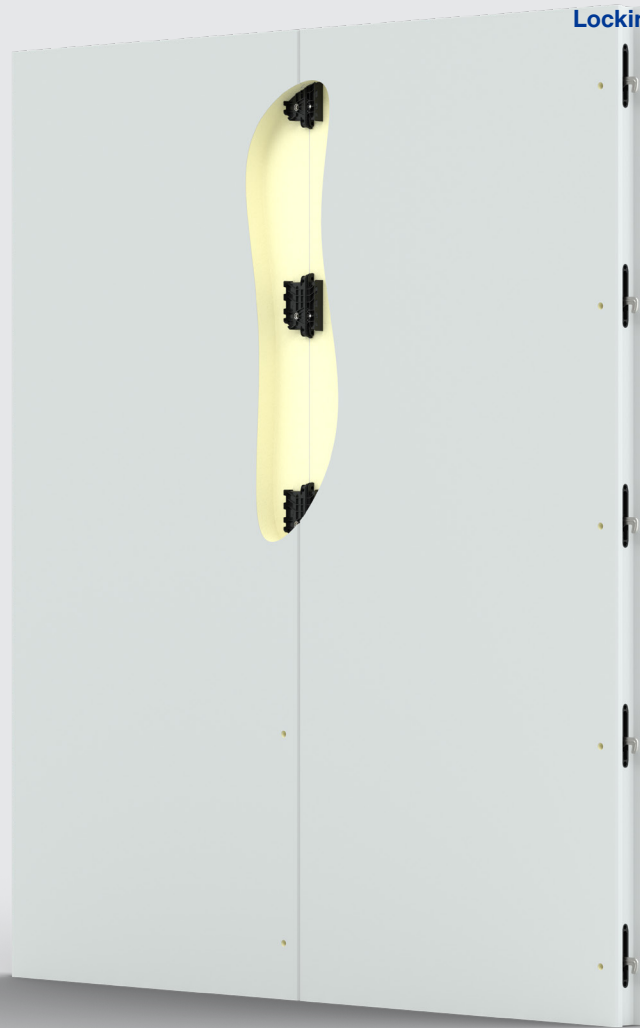


**0270-020009**  
Installation aid for fastener part,  
reusable

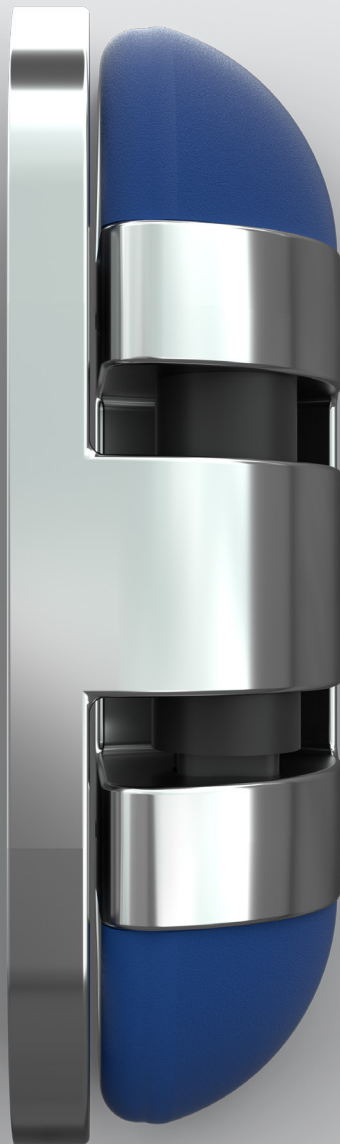


**0270-020019**  
Installation aid for counter part,  
reusable

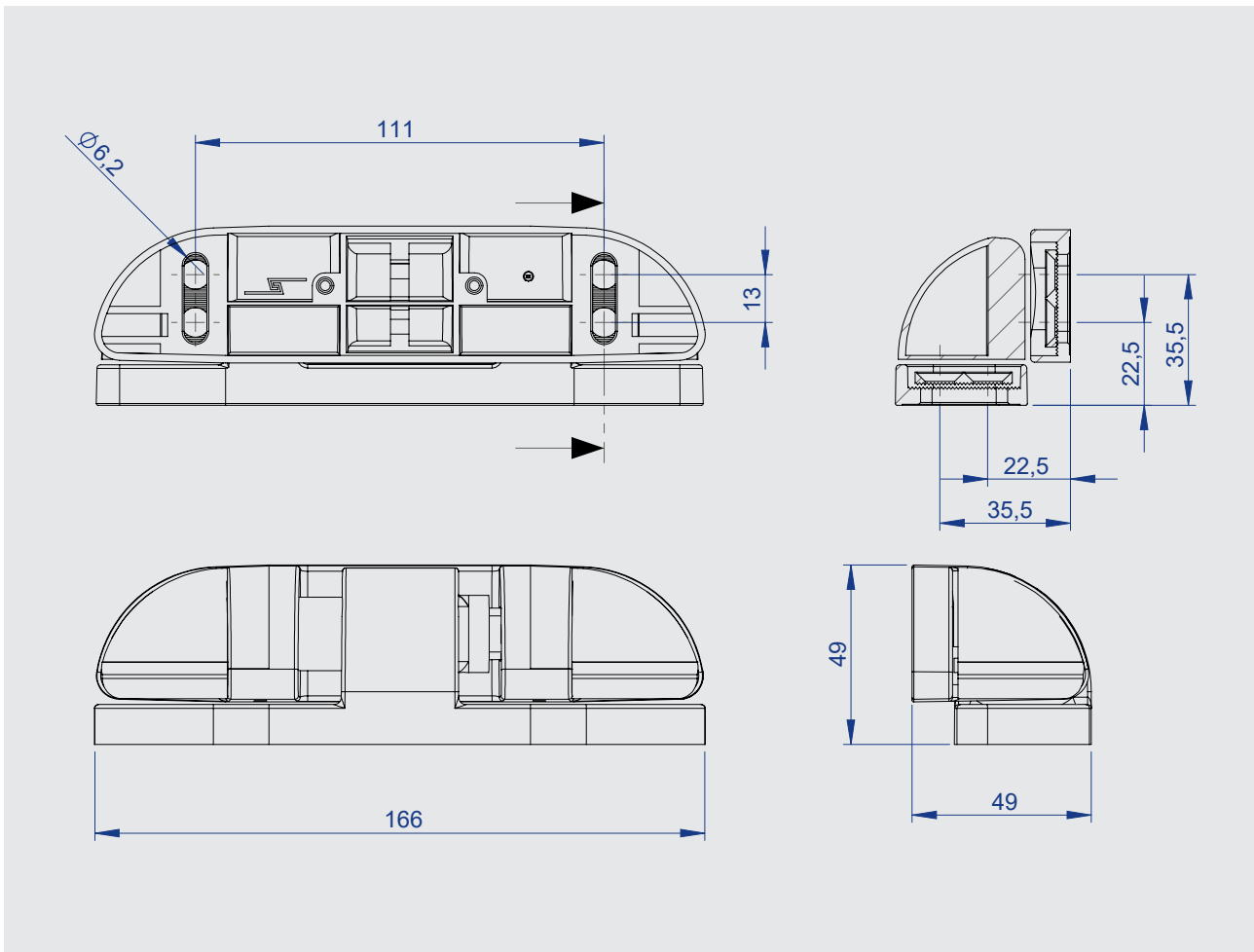




## Edge-mounted hinge Series 4514 FUTURO



- Modern design for customization
- **Universal application**
- Adjustable in three axes optionally rising / non-rising
- **Can be used for left- and right-hand doors**
- Disassembly protection with closed door
- **Load capacity with two hinges of max. 80 kg**
- Caps colored, removable
- **Other colors on request**
- Offset min. 49 mm



Clear and modern: This hinge convinces with its futuristic design and customizing options: The caps are available in three standard colors but are not limited to only these three. On request any of the RAL colors are possible. Besides great looks though, these caps also act as a disassembly protection, covering up the mounting screws. This edge-mounted hinge is tried and tested as it combines a slew of useful functions: It can be adjusted in three axes, is available in either rising or non-rising versions, and is suitable for both left- and right-hand doors — universal usability par excellence. The load capacity of up to 80 kg with two hinges puts the icing on the cake.

## Materials

Hinge: Die-cast zinc, chrome-plated or powder-coated  
 Caps: Plastic  
 Other components: Plastic or die-cast zinc or stainless steel

Finish: Chrome-plated, powder-coated

Standard colors: Hinge: chrome, gray (RAL 7001)  
 Caps: black, gray, blue

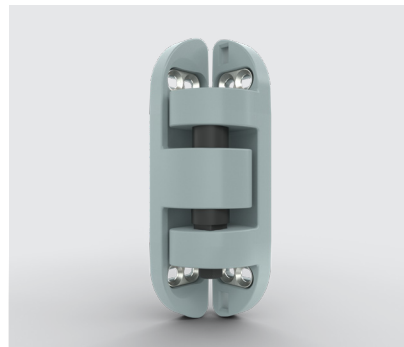
**Note:** Please also see the assembly instructions.

## Variants



**Hinge, chrome-plated**

Right, rising	<b>4514-020200</b>
Left, rising	<b>4514-020201</b>
Non-rising	<b>4514-020502</b>



**Hinge, gray (RAL 7001)**

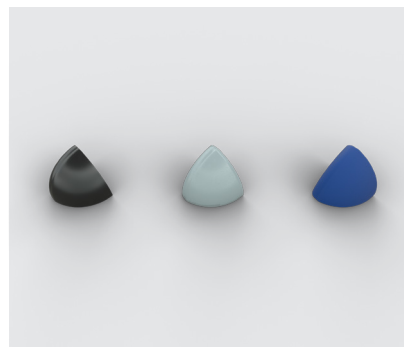
Right, rising	<b>4514-020210</b>
Left, rising	<b>4514-020211</b>
Non-rising	<b>4514-020512</b>

## Optional



**Shims**

Black	<b>4514-020050</b>
Gray	<b>4514-020051</b>
Blue	<b>4514-020053</b>



**Caps (pair)**

Black	<b>4514-020010</b>
Gray	<b>4514-020011</b>
Blue	<b>4514-020013</b>



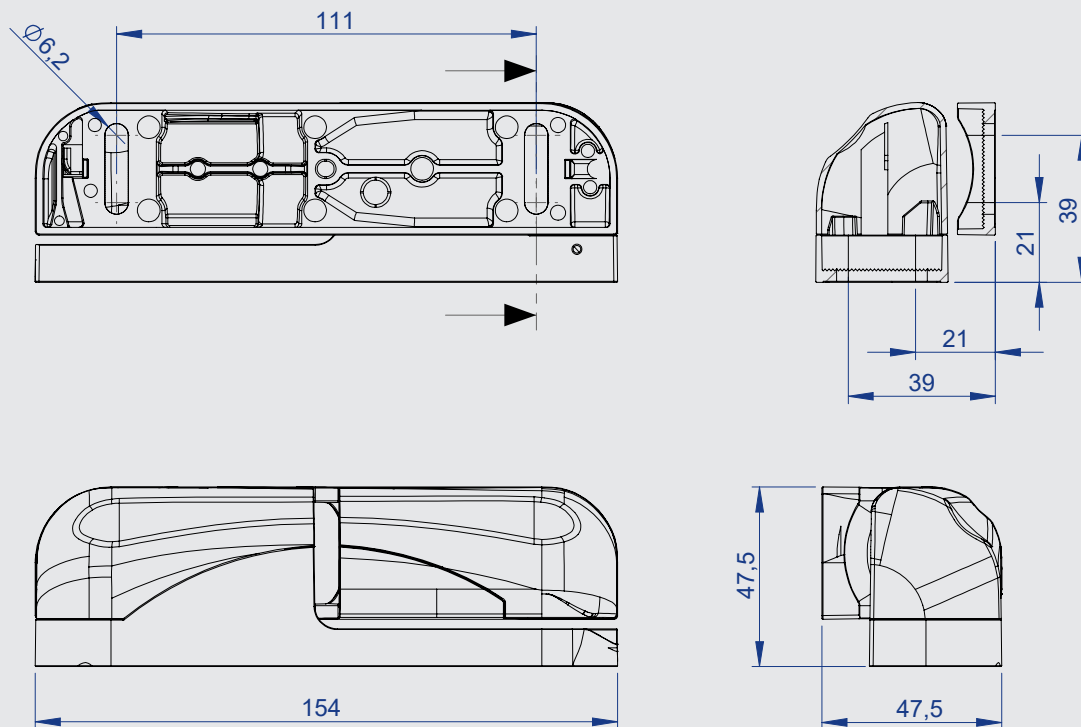


## Edge-mounted hinge Series 7514 BONO



- Modern hinge for highest demands
- **Adjustable in three axes**
- rising / non-rising variants
- **For left- and right-hand doors**
- Unhingeable
- **Disassembly protection**
- Load capacity with two hinges of max. 80 kg
- **Caps colored, removable**
- Custom colors on request
- **Offset min. 47,5 mm**





If you are looking for a stylish, but at the same time reliable and durable hinge, you should simply bet on these four letters: Bono. „You have found what you are looking for“, because this edge-mounted hinge not only meets the highest demands, but also always looks incredibly modern due to the wide selection of colored and removable caps. Bono is tried and tested as it combines a slew of useful functions: It is adjustable in three axes, available either rising or non-rising, can be unhinged and is available in both left-hand and right-hand versions — universal usability par excellence. The disassembly protection when the door is closed and a load capacity of max. 80 kg with two hinges put the icing on the cake.

## Materials

Hinge: Die-cast zinc, chrome-plated or powder-coated  
 Caps: Plastic  
 Other components: Plastic or die-cast zinc or stainless steel

Finish: Chrome-plated, powder-coated

Standard colors: Hinge: chrome, gray (RAL 7001)  
 Caps: black, gray, blue

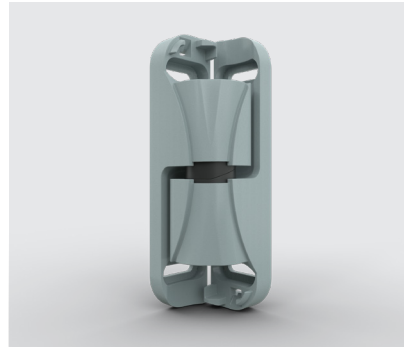
**Note:** Please also see the assembly instructions.

## Variants



**Hinge, chrome-plated**

Right, rising	<b>7514-020070</b>
Left, rising	<b>7514-020071</b>
Right, non-rising	<b>7514-020072</b>
Left, non-rising	<b>7514-020073</b>



**Hinge, gray (RAL 7001)**

Right, rising	<b>7514-020080</b>
Left, rising	<b>7514-020081</b>
Right, non-rising	7514-020082
Left, non-rising	7514-020083

## Optional



**Shims**

Black	<b>7514-020031</b>
Gray	<b>7514-020030</b>
Blue	<b>7514-020032</b>



**Caps (single)**  
order 2 caps per hinge

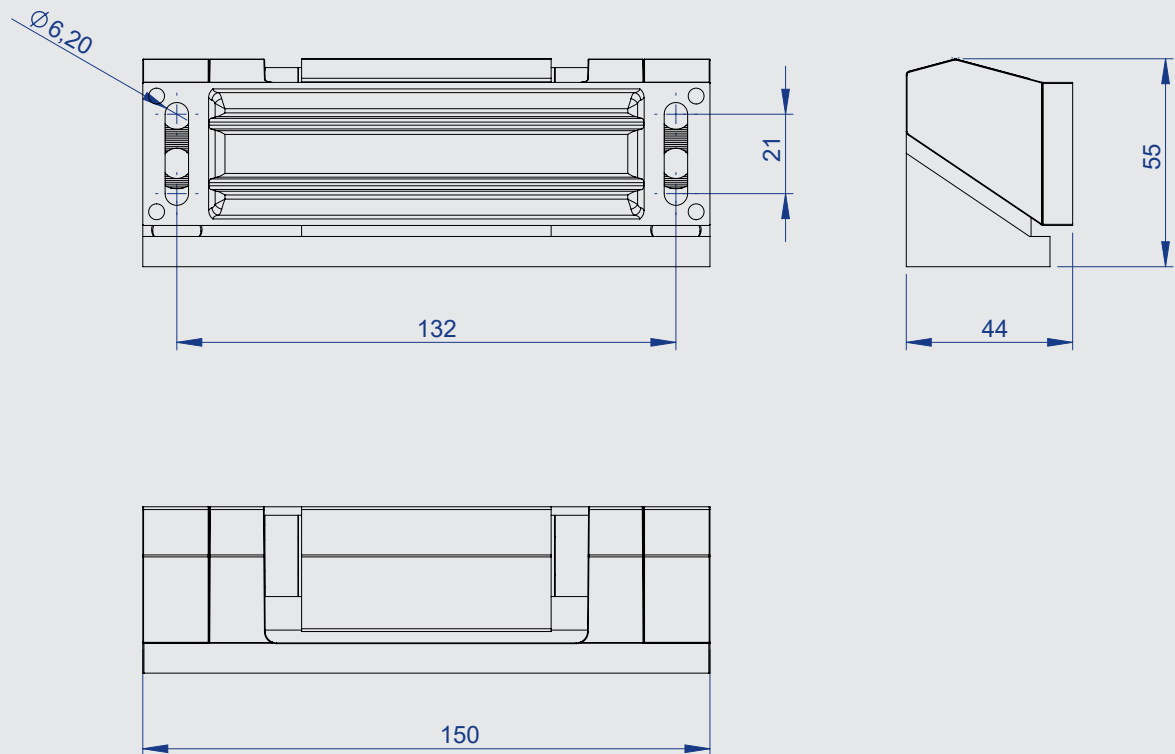
	Left	Right
Black	<b>7514-020007</b>	<b>7514-020006</b>
Gray	<b>7514-020005</b>	<b>7514-020004</b>
Blue	<b>7514-020009</b>	<b>7514-020008</b>



## Edge-mounted hinge Series 4000/4001



- Sophisticated hinge in timeless design
- **Disassembly protection with closed door**
- Choice of rising / non-rising
- **Right and left variants**
- Load capacity with two hinges of max. 80 kg
- **Offset min. 44 mm**



Simply elegant: This sophisticated edge-mounted hinge convinces not only with timeless design, but also with extensive functionality: It is available for either left- or right-hand doors, and in rising and non-rising variants. The disassembly protection when the door is closed and a load capacity of max. 80 kg with two hinges provide secure closure.

### Materials

Hinge: Die-cast zinc, chrome-plated or powder-coated  
 Caps: Die-cast zinc, chrome-plated or powder-coated  
 Other components: Plastic or die-cast zinc or stainless steel or steel, zinc-plated

Finish: Chrome-plated, powder-coated

Standard colors: chrome, gray (RAL 7001)

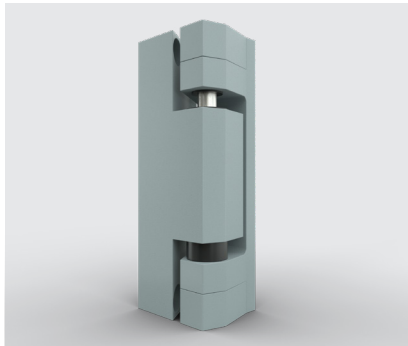
**Note:** Please also see the assembly instructions.

# Variants



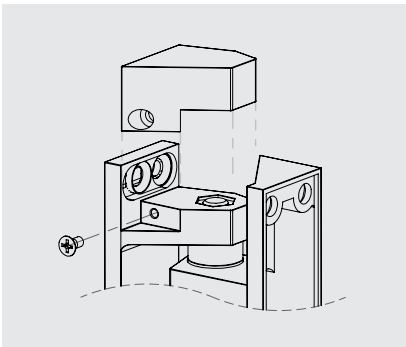
Hinge, chrome-plated

Right, rising	4001-020262
Left, rising	4001-020263
Non-rising	4000-020271



Hinge, gray (RAL 7001)

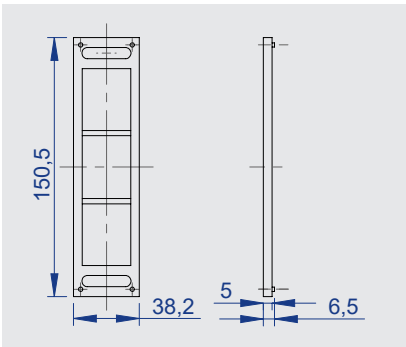
Right, rising	4001-020260
Left, rising	4001-020261
Non-rising	4000-020265



Disassembly protection

Access to cap screw only in open state

# Optional



4000-020548  
Shim, 5 mm

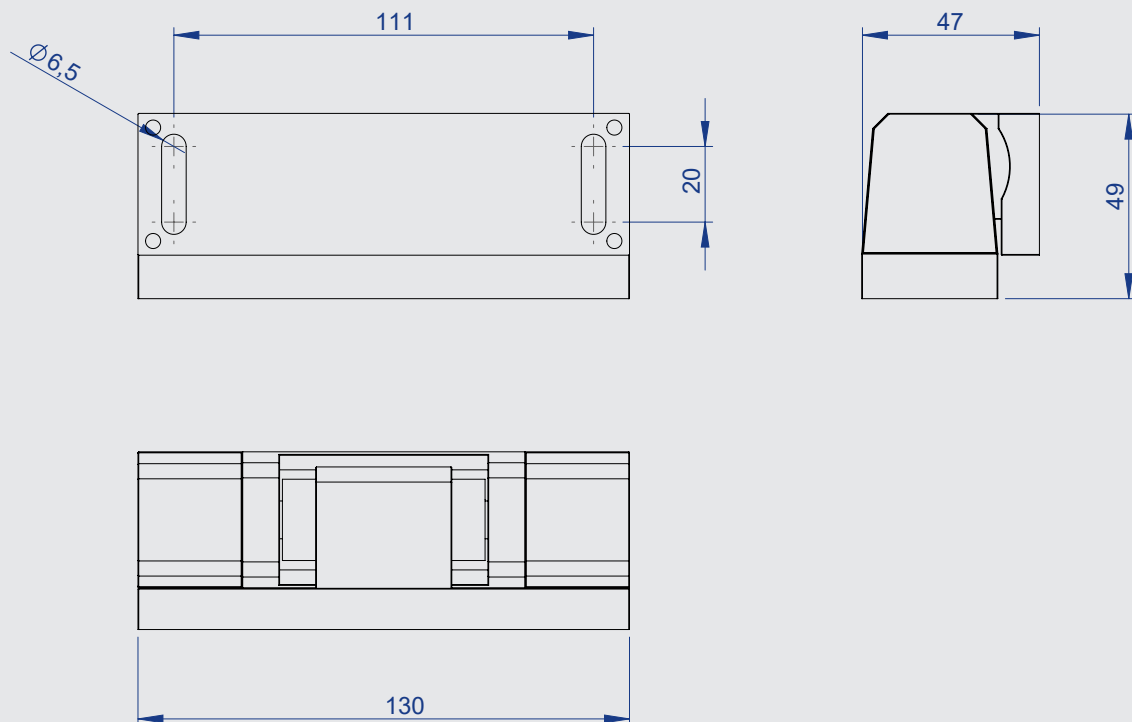




## Edge-mounted hinge Series 4510/4511



- Straightforward hinge in straight optics
- **Adjustable in two axes**
- Choice of rising / non-rising
- **Right and left versions**
- Disassembly protection with closed door
- **Load capacity with two hinges of max. 80 kg**
- Offset min. 49 mm



Perfect closure guaranteed: This edge-mounted hinge not only looks extremely classy thanks to its straightforward look, but also knows how to please with its wide range of functions: Adjustable in two axes, optionally rising or non-rising and available in right and left versions. The disassembly protection when the door is closed and the load capacity of max. 80 kg with two hinges provide secure closure.

### Materials

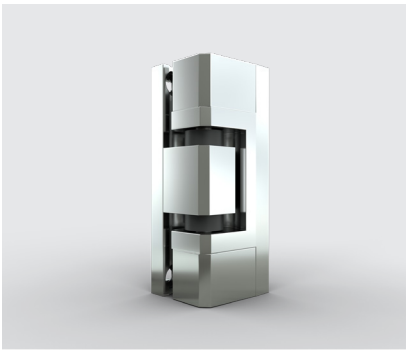
Hinge: Die-cast zinc, chrome-plated or powder-coated  
 Caps: Die-cast zinc, chrome-plated or powder-coated  
 Other components: Plastic or die-cast zinc or stainless steel or steel, zinc-plated

Finish: Chrome-plated, powder-coated

Standard colors: chrome, gray (RAL 7001)

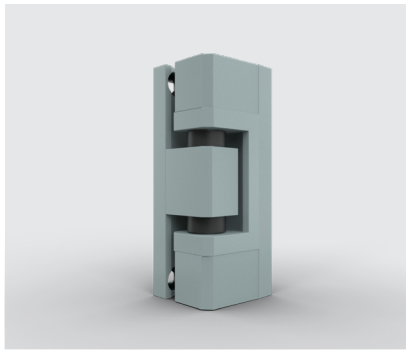
**Note: Please also see the assembly instructions.**

# Variants



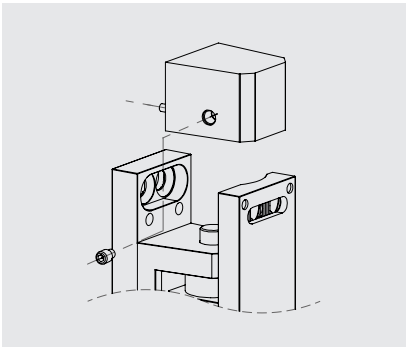
Hinge, chrome-plated

Right, rising	4511-020606
Left, rising	4511-020607
Non-rising	4510-020603



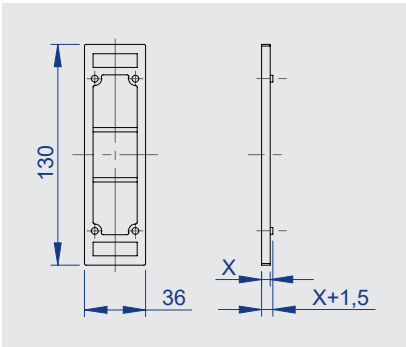
Hinge, gray (RAL 7001)

Right, rising	4511-020608
Left, rising	4511-020609
Non-rising	4510-020604



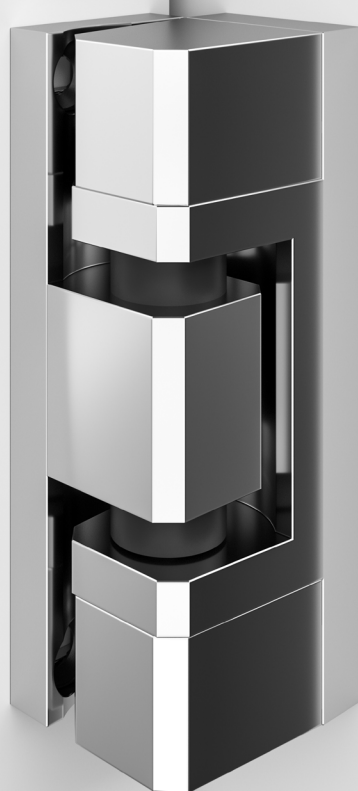
**Burglar resistance**  
 Access to cap screw only  
 in open state

# Optional



Shim, plastic, X mm

X = 5 mm	4510-020614
X = 15 mm	4510-020967

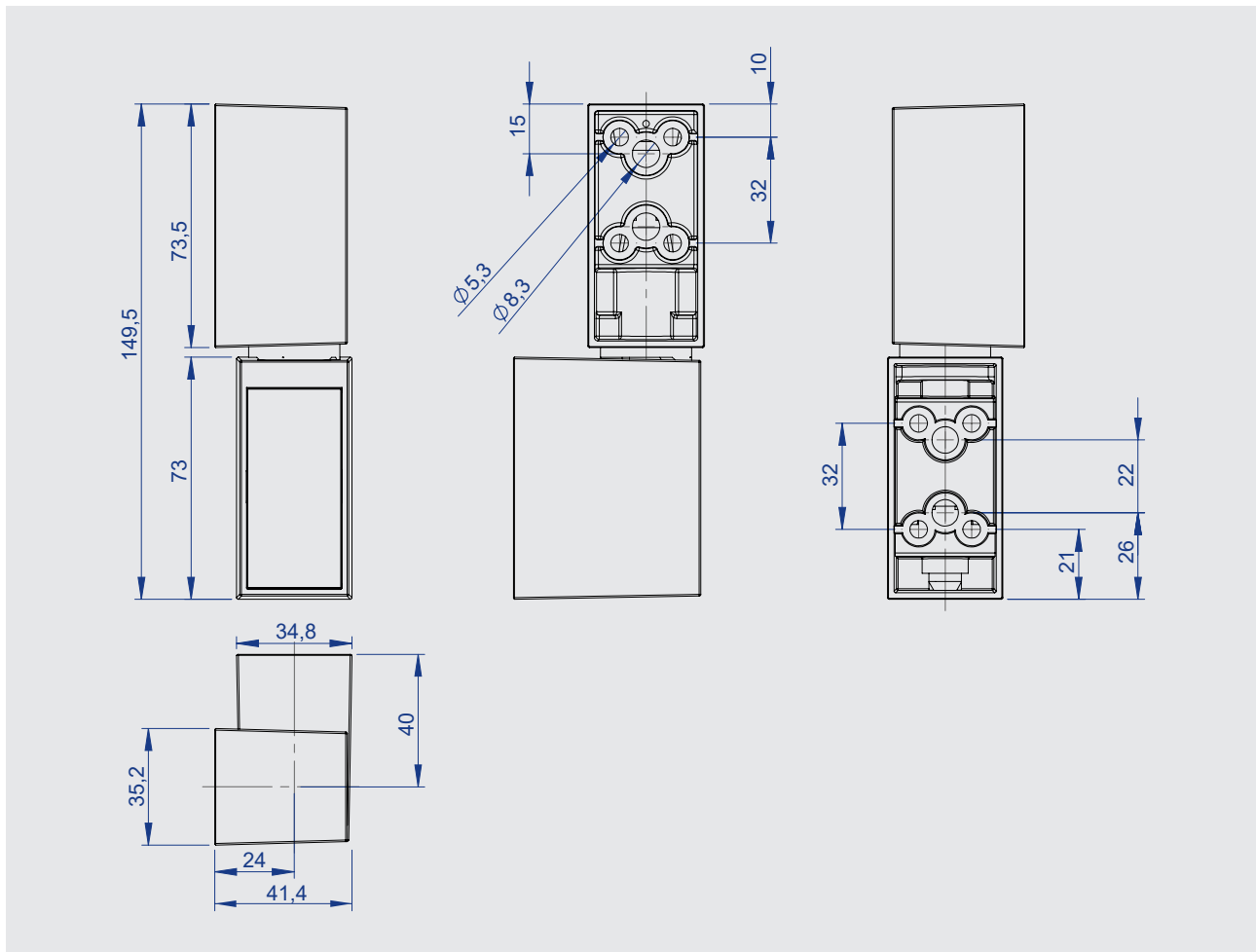


## Edge-mounted hinge Series 4002/4003



- Classic hinge with retro look
- **Disassembly protection with closed door**
- Can be used for left- and right-hand doors
- Choice of rising / non-rising
- Unhingeable
- **Load capacity with two hinges of max. 40 kg**
- Offset min. 41,4 mm





This hinge has a classic retro look and wide range of functions, so it's a real winner for all closure systems. It's available in either rising or non-rising versions, is unhingeable, and can be used for both left- and right-hand doors. In addition, it has a security plate that prevents access to the mounting screws and thus acts as a burglar barrier. The disassembly protection when the door is closed and the load capacity of max. 40 kg with two hinges provide secure closure.

## Materials

Hinge: Die-cast zinc, chrome-plated or powder-coated  
 Caps: Die-cast zinc, chrome-plated or powder-coated  
 Other components: Plastic or die-cast zinc or stainless steel or steel, zinc-plated

Finish: Chrome-plated, powder-coated

Standard colors: chrome, gray (RAL 7001)

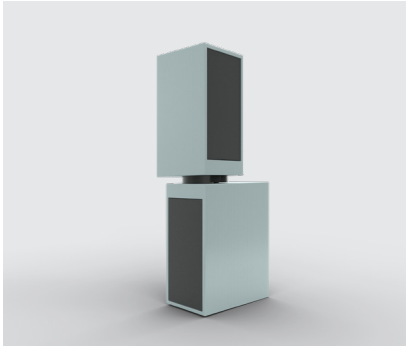
**Note:** Please also see the assembly instructions.

# Variants



Hinge, chrome-plated

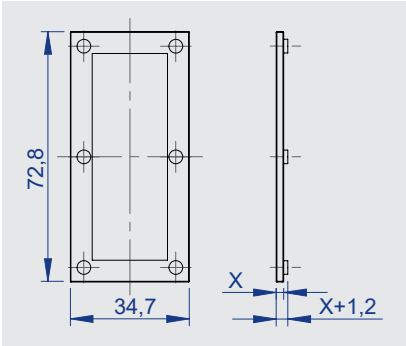
Rising	<b>4003-020776</b>
Non-rising	4002-020770



Hinge, gray (RAL 7001)

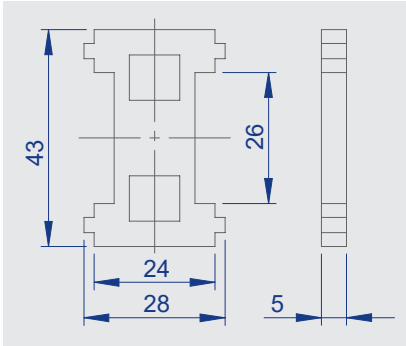
Rising	4003-020779
Non-rising	4002-020773

# Optional



Shim, plastic, X mm

X = 2 mm	<b>4002-020919</b>
X = 11 mm	4002-020920



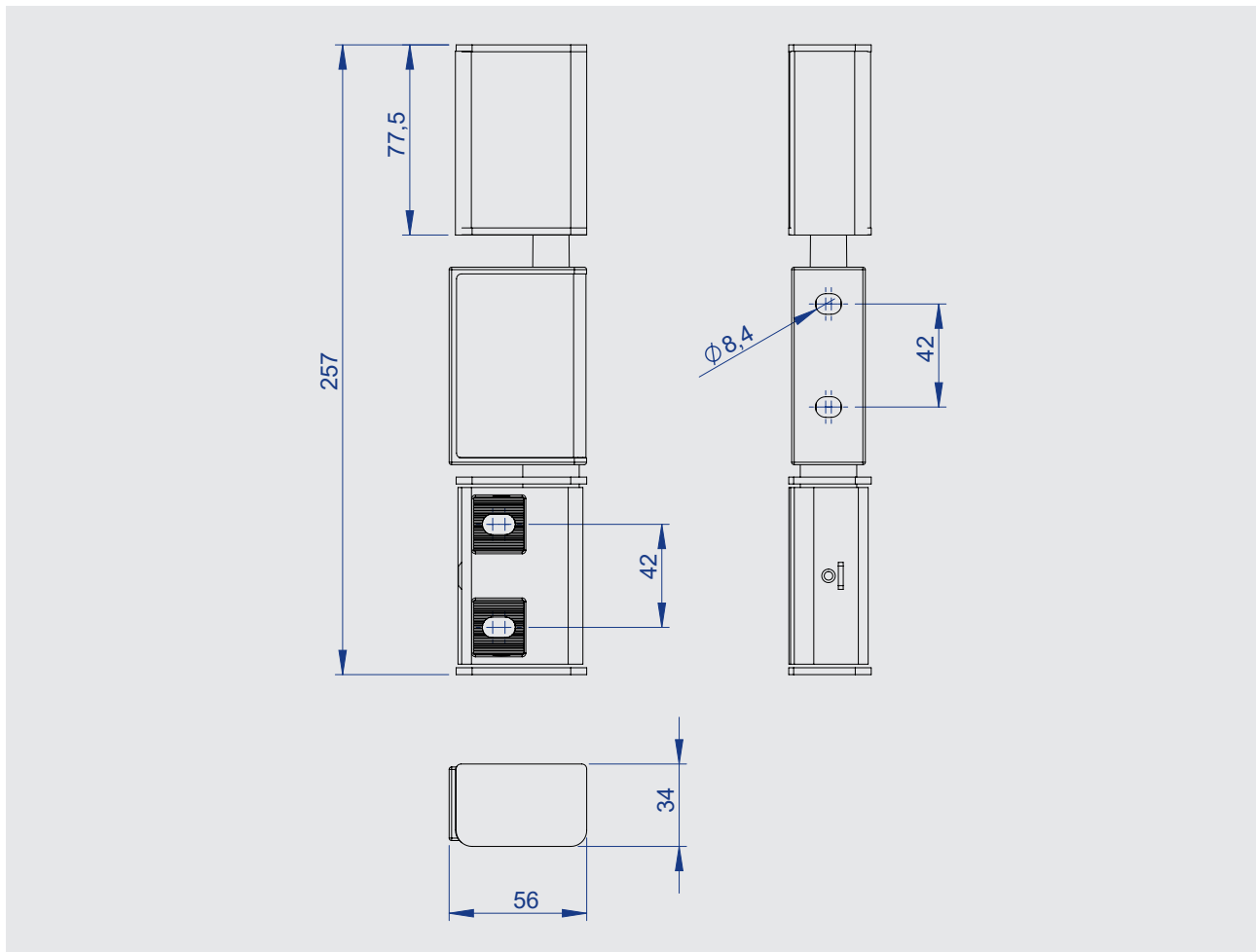
**4002-020197**  
Security plate, plastic



## Edge-mounted hinge Series 4004



- Robust plastic hinge in stainless steel look
- Disassembly protection with closed door
- Rising
- Adjustable in three axes
- Corrosion resistant
- Right and left versions
- Load capacity with two hinges of max. 80 kg
- Offset min. 34 mm

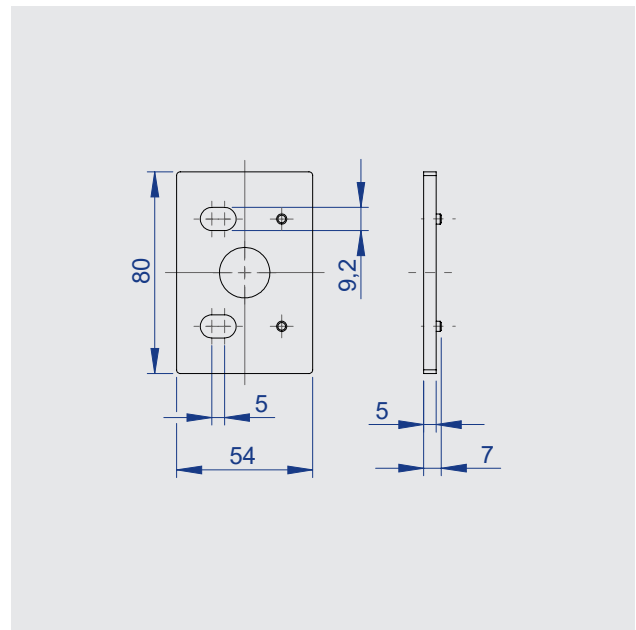


This edge-mounted hinge offers perfect closure with plastic. It may not look like it in view of its stainless steel appearance, but it really is plastic. The extremely robust hinge is corrosion-resistant, rising and has a load capacity of up to 80 kg in the double pack — seriously impressive. At the same time, it can be adjusted in three axes and is available as right and left version. This hinge simply offers more than you would think.

## Materials

Hinge: Die-cast zinc, surrounded with plastic  
 Caps: stainless steel, brushed  
 Other components: Plastic or die-cast zinc or stainless steel or steel, zinc-plated

**Note:** Please also see the assembly instructions.



**Hinge, black, stainless steel**

Right	<b>4004-020100</b>
Left	<b>4004-020101</b>

**4004-020010**

Shim, plastic, 5 mm  
clipable

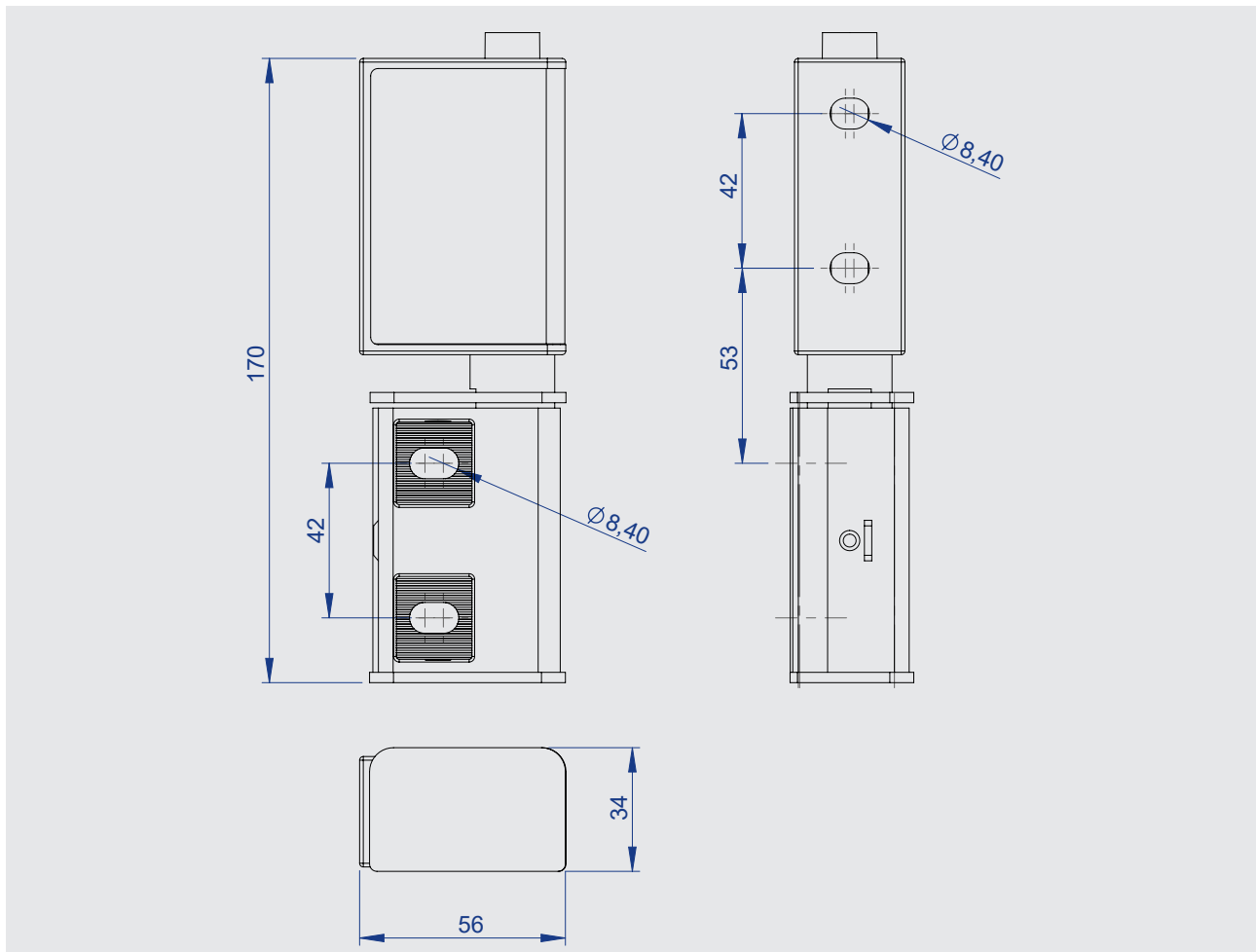




## Edge-mounted hinge Series 4006



- Edge-mounted hinge in stainless steel look
- Corrosion resistant
- Adjustable in three axes
- Disassembly protection with closed door
- Rising
- Unhingeable
- Right and left versions
- Load capacity with two hinges of max. 40 kg
- Offset min. 34 mm



Plastic? For hinges? Yes! You might not expect the material selection given the stainless steel look, but it really is plastic. The extremely robust edge-mounted hinge is corrosion-resistant, rising, unhingeable, and has a load capacity of up to 40 kg with two hinges – seriously impressive. At the same time, it can be adjusted in three axes and comes in a right or left version, as well as a disassembly protection when the door is closed. This plastic hinge brings something new to the table!

## Materials

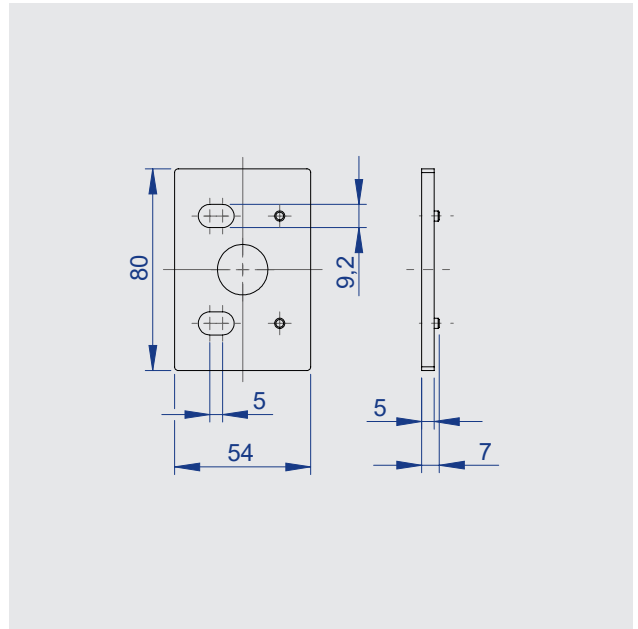
Hinge: Die-cast zinc, surrounded with plastic  
 Caps: stainless steel, brushed  
 Other components: Plastic or die-cast zinc or stainless steel or steel, zinc-plated

**Note: Please also see the assembly instructions.**



**Hinge, black, stainless steel**

Right	<b>4006-020102</b>
Left	<b>4006-020103</b>



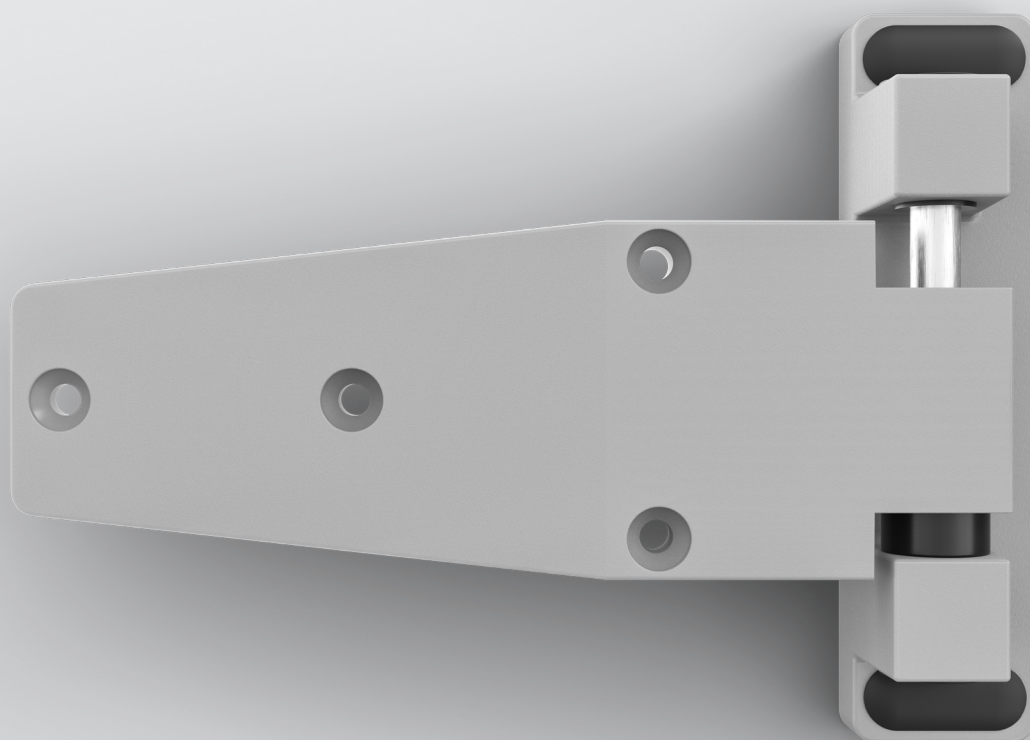
**4004-020010**

Shim, plastic, 5 mm  
clipable



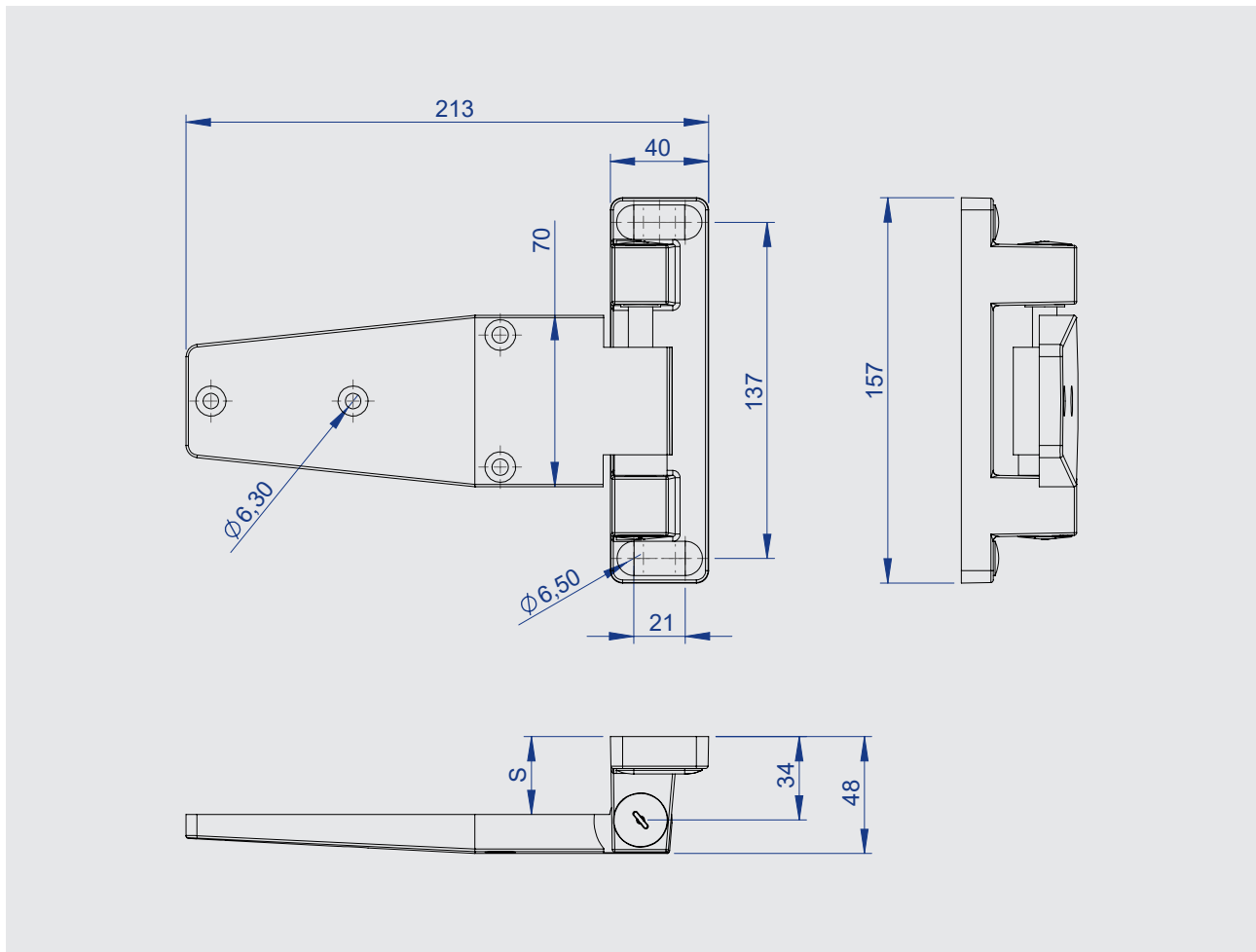
## Hinge

### Series 4296



- Hinge for the highest demands
- [Rising](#)
- Adjustable in two axes
- [Right and left versions](#)
- Load capacity with two hinges of max. 80 kg





This hinge is made for the highest of all demands and always masters them with just one swing. Stability meets functionality here: The robust hinge is rising, adjustable in two axes and available in right and left versions. In a double pack, it even lifts up to 80 kg — strong as a bear!

### Materials

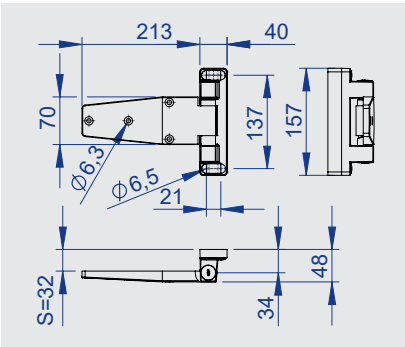
Hinge: Die-cast zinc, powder-coated  
 Caps: Plastic  
 Other components: Plastic or die-cast zinc or stainless steel or steel, zinc-plated

Finish: Powder-coated

Colors: black, gray aluminum (RAL 9007)

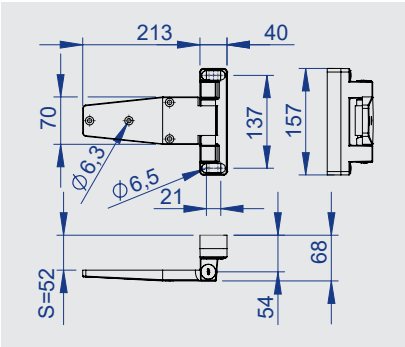
**Note: Please also see the assembly instructions.**

# Variants



Hinge, rising  
S = 32 mm

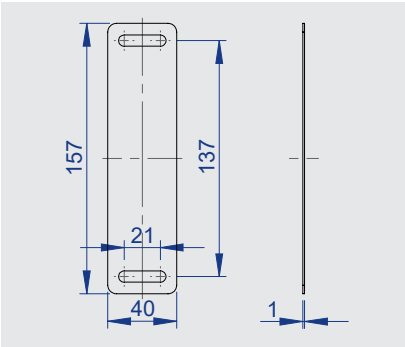
	Right	Left
Gray (RAL 9007)	<b>4296-020012</b>	<b>4296-020011</b>
Black	<b>4296-020022</b>	<b>4296-020021</b>



Hinge, rising  
S = 52 mm

	Right	Left
Gray (RAL 9007)	<b>4296-020034</b>	<b>4296-020033</b>
Black	4296-090044	4296-090043

# Optional



**4296-020050**  
Shim, plastic, 1 mm

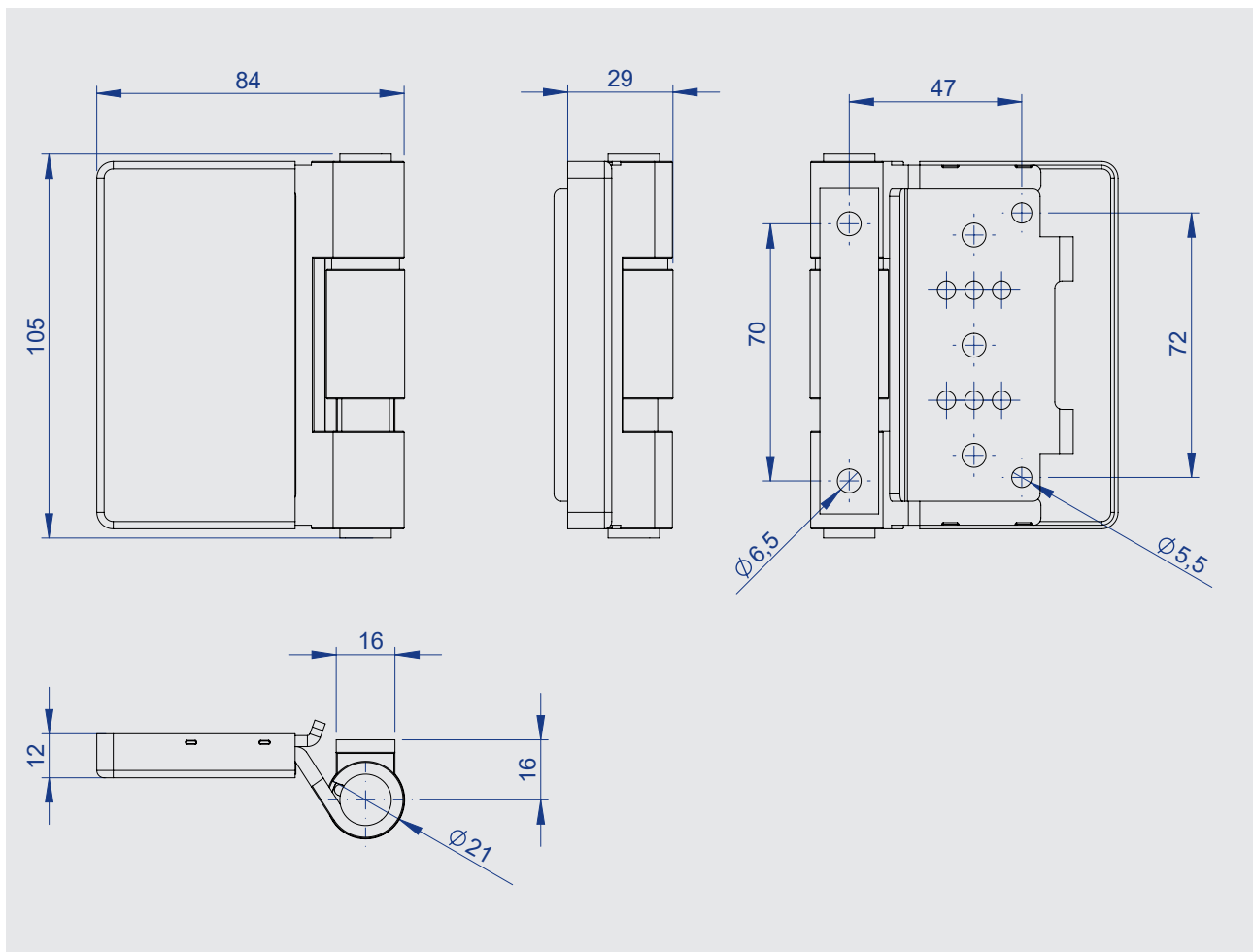


## Hinge

### Series 5000



- Robust stainless steel hinge for flush doors
- **Rising**
- Adjustable in two axes
- Load capacity with two hinges of max. 80 kg



## Hinge

Right	5000-020001
Left	5000-020002

Secure closure: This sturdy stainless steel hinge complete with decorative caps is perfect for flush doors. Even really heavy ones. With another hinge, it can easily lift up to 80 kg. Is it also rising and adjustable in two axes? Of course!

## Materials

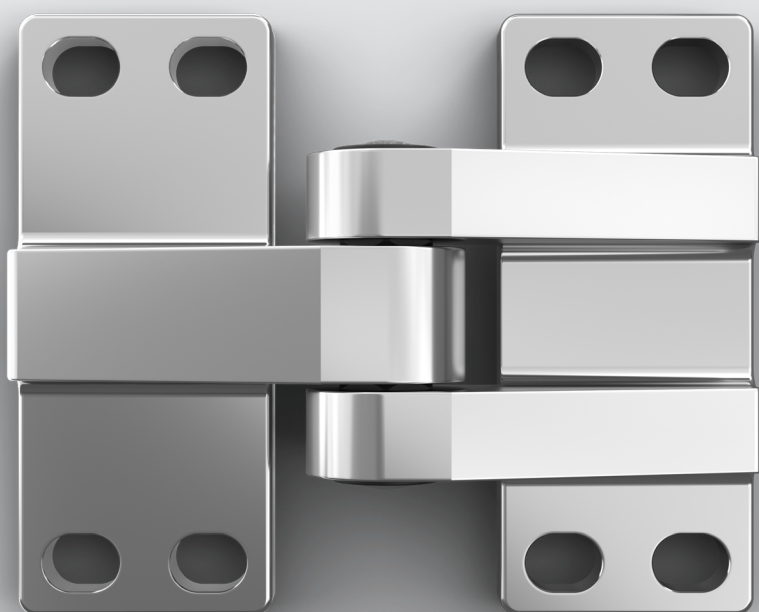
All components: Stainless steel

**Note:** Please also see the assembly instructions.



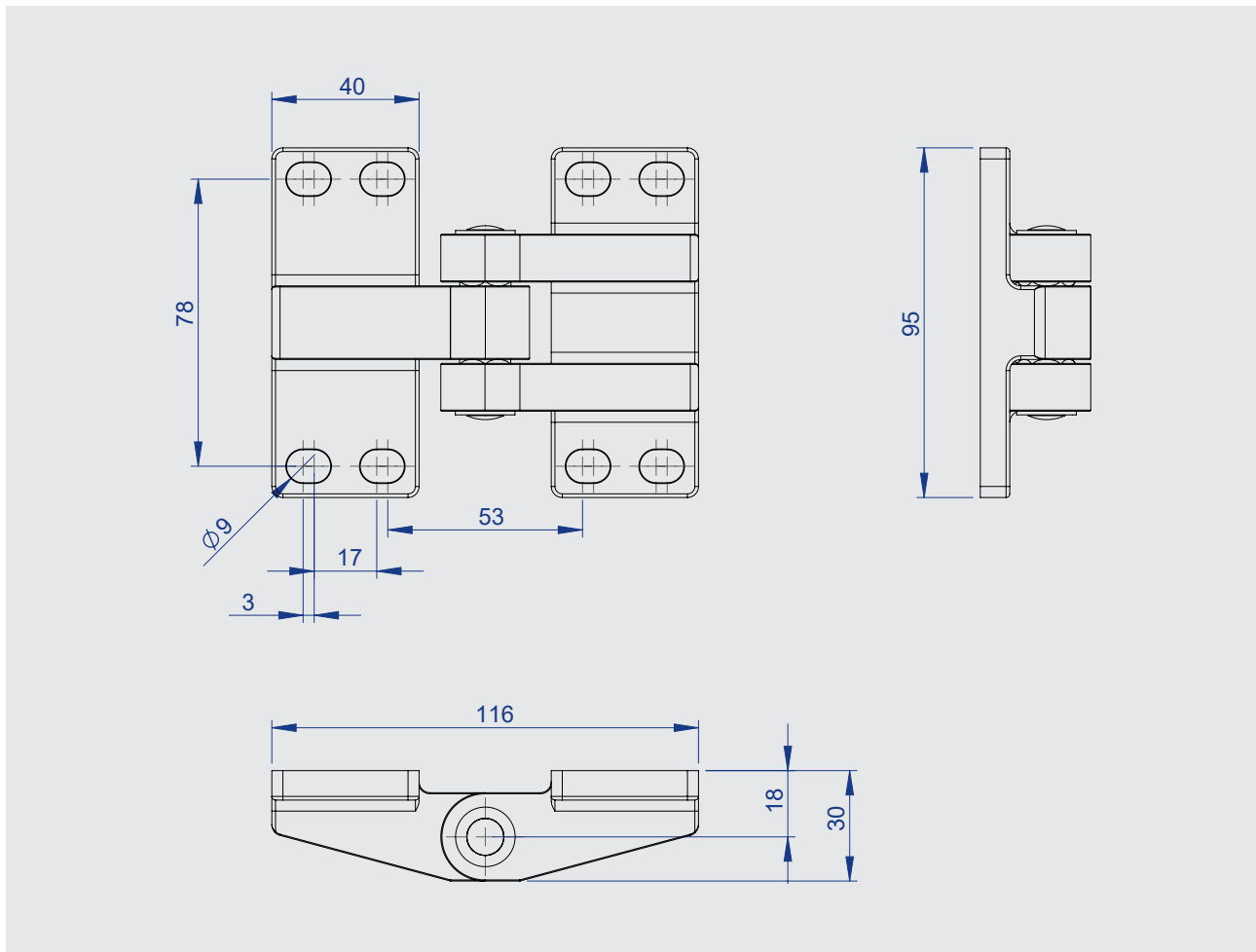
## Hinge

### Series 7902



- Simple hinge for universal application
- **For flush doors**
- Chrome-plated
- **Can be used for left- and right-hand doors**
- Load capacity with two hinges max. 30 kg





### Hinge

chrome-plated	<b>7902-020341</b>
---------------	--------------------

Variety can be this simple: This simple hinge for universal use is perfect for flush doors. The chrome-plated all-rounder can be used for both right- and left-handed versions. In a pack of two, it has a load capacity of up to 30 kg – easy.

### Materials

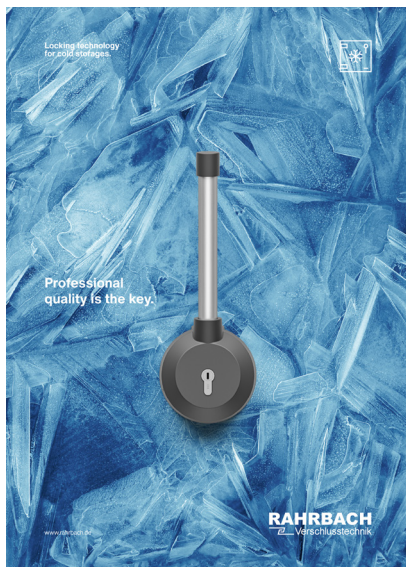
Hinge: Die-cast zinc, chrome-plated  
Hinge pin: Stainless steel  
Other components: Plastic

Finish: Chrome-plated

**Note:** Please also see the assembly instructions.



## Cold storage catalog



### Multi-function latching system

P 4

### Multi-function latching system

P 16

Series 7501 VITRO

### Multi-function latching system

P 20

Series 7503 NITRO

### Multi-function latching system

P 24

Series 7506

### Multi-function latching system

P 28

Series 7507

### Multi-point latching

P 30

Series 7505 ROBUSTO

### Cold room door latch

P 34

Series 6000 JUMBO

### Cold room door latch

P 42

Series 6002 JUMBO

### Cold room door latch

P 48

Series 6004 RONDO

### Bolt latch

P 54

Series 7150

### Panel fastener

P 58

Series 0270

### Edge-mounted hinge

P 62

Series 4514 FUTURO

### Edge-mounted hinge

P 66

Series 7514 BONO

### Edge-mounted hinge

P 70

Series 4000/4001

### Edge-mounted hinge

P 74

Series 4510/4511

### Edge-mounted hinge

P 78

Series 4002/4003

### Edge-mounted hinge

P 82

Series 4004

### Edge-mounted hinge

P 86

Series 4006

### Hinge

P 90

Series 4296

### Hinge

P 94

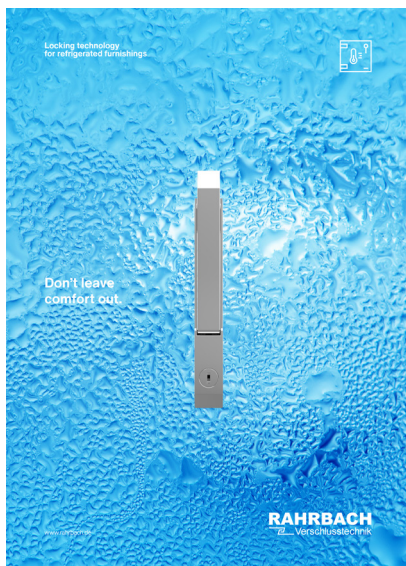
Series 5000

### Hinge

P 96

Series 7902

## Refrigerated furnishings catalog



### Edge-mounted latch

P 4

Series 6188 ERGO

### Edge-mounted latch

P 8

Series 6190 ERGO

### Edge-mounted latch

P 14

Series 6186 Presto

### Surface-mounted latch

P 20

Series 6180

### Surface-mounted latch

P 24

Series 6770

### Panel fastener

P 28

Series 0253

### Strap hinge

P 32

Series 4480

### Surface-mounted hinge

P 36

Series 7900

### Edge-mounted hinge

P 38

Series 4500

### Edge-mounted hinge/Spring-loaded hinge

P 42

Series 4513

### Cylinder lock

P 46

Series 5801

### Door and drawer lock

P 50

Series 5811

### Door and drawer lock

P 52

Series 5812

### Spring-loaded catch

P 56

Series 5710

### Double ball catch

P 60

Series 6195

### Spring-loaded hinge

P 62

Series 3653 Dremo

## Heated applications catalog



### Pendulum latch

P 10

Series 6332

### Pendulum latch

P 14

Series 6333

### Pendulum latch

P 18

Series 6334

### Pendulum latch

P 22

Series 6303

### Latching mechanism

P 26

Series 6339

### Cam action latch

P 30

Series 6302

### Cam action latch

P 34

Series 6300

### Two-point latch

P 38

Series 6337

### Two-point latch

P 42

Series 0751

### Edge-mounted latch

P 46

Series 6200 DUPLO

### Edge-mounted latch

P 50

Series 6188 ERGO

### Electro-magnetic latch

P 56

Series 8440 HOPPO

### Strike blocking unit

P 60

Series 6311



