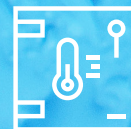


Locking technology  
for refrigerated furnishings



Don't leave  
comfort out.



[www.rahrbach.de](http://www.rahrbach.de)

**RAHRBACH**  
Verschlusstechnik









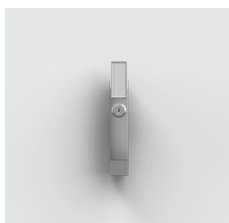
**Edge-mounted latch**  
Series 6188 ERGO

Page 4



**Edge-mounted latch**  
Series 6190 ERGO

Page 8



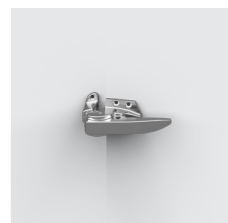
**Edge-mounted latch**  
Series 6186 Presto

Page 14



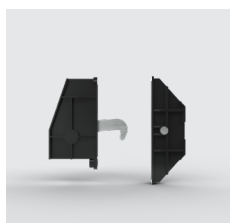
**Surface-mounted latch**  
Series 6180

Page 20



**Surface-mounted latch**  
Series 6770

Page 24



**Panel fastener**  
Series 0253

Page 28



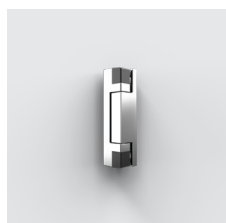
**Strap hinge**  
Series 4480

Page 32



**Surface-mounted hinge**  
Series 7900

Page 36



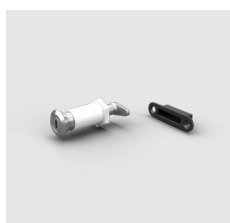
**Edge-mounted hinge**  
Series 4500

Page 38



**Edge-mounted hinge / Spring-loaded hinge**  
Series 4513

Page 42



**Cylinder lock**  
Series 5801

Page 46



**Door and drawer lock**  
Series 5811

Page 50



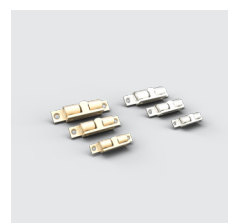
**Door and drawer lock**  
Series 5812

Page 52



**Spring-loaded catch**  
Series 5710

Page 56



**Double ball catch**  
Series 6195

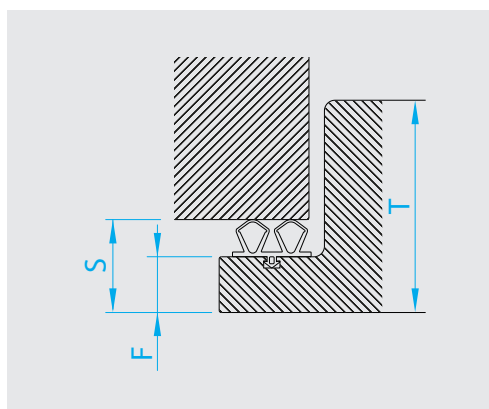
Page 60



**Spring-loaded hinge**  
Series 3653 Dremo

Page 62

**S** = Offset  
**T** = Door thickness  
**F** = Rabbet thickness



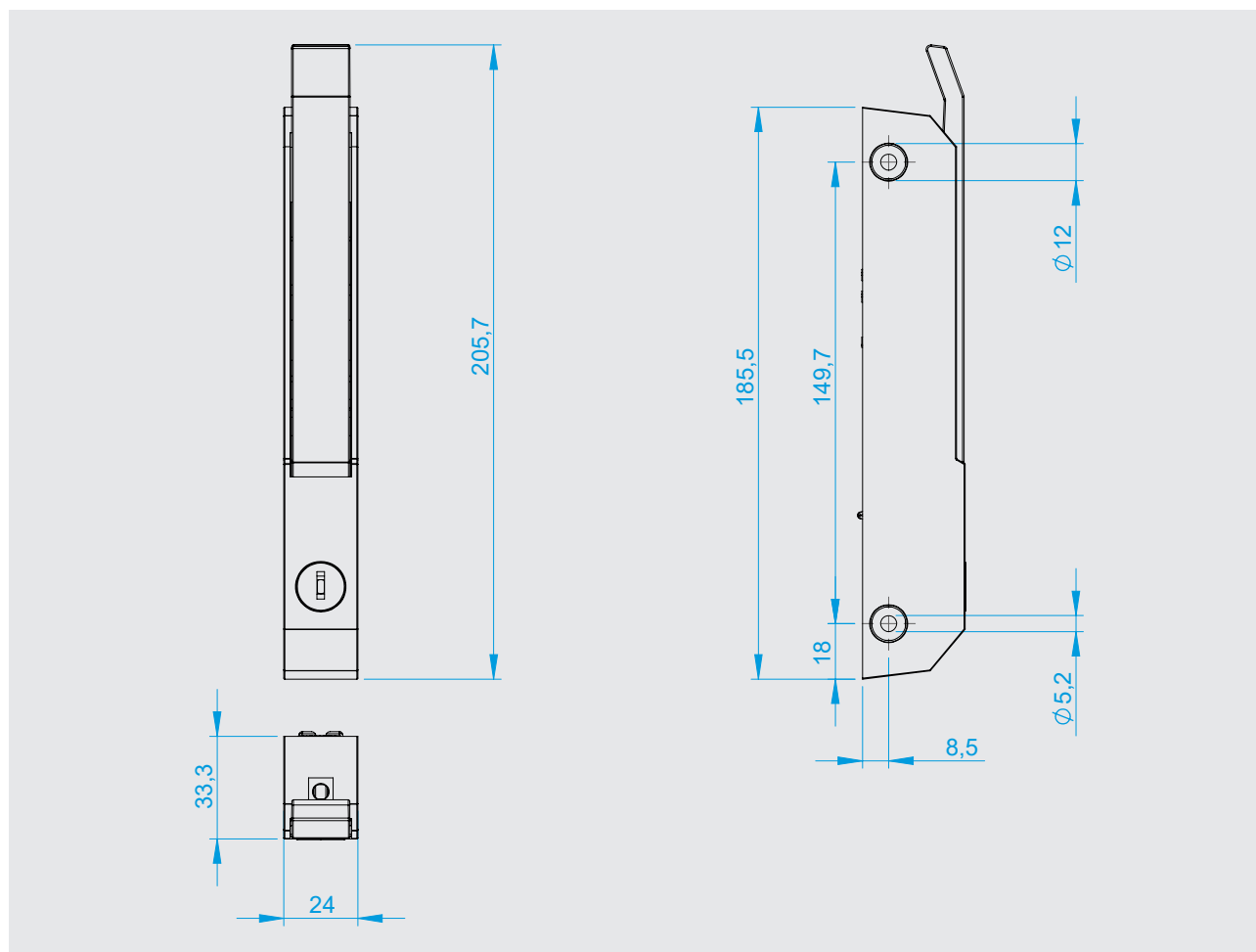


## Edge-mounted latch Series 6188 ERGO



- Edge-mounted latch for refrigerated cabinets, commercial refrigerators, cold storage cells, counters etc.
- [Self-closing latch with adjustable locking force](#)
- Lockable/non-lockable
- [Different locking variants](#)
- With normal/reinforced spring force
- [Openable from the inside/non-openable from the inside](#)
- Powder-coated finishes in custom RAL colors on request





Enough with drafts! This edge-mounted latch for doors does not allow any warm breezes to pass through and reliably secures food in refrigerated cabinets, commercial refrigerators or cold storage cells. The self-closing latch with adjustable locking force is available both with and without a lock. In the variants with a lock, different locking variants are possible. Due to normal, optionally also reinforced spring force, interruptions in the cold chain are virtually impossible. They are tried and tested and nice to look at because the edge-mounted latches come either in plastic or with a chrome-plated or powder-coated finish, which is available on request in any of the RAL colors.

## Materials

Base plate:	Die-cast zinc, zinc-plated
Housing:	Die-cast zinc, chrome-plated or plastic
Handle:	Die-cast zinc, chrome-plated
Strikes:	Die-cast zinc, chrome-plated
Latch:	Die-cast zinc, zinc-plated
Caps:	Plastic
Pins:	Steel, zinc-plated
Springs:	Spring steel
Screws:	Zinc-plated
Other components:	Plastic or die-cast zinc
Finish:	Chrome-plated, powder-coated
Standard colors:	Chrome
	Black (RAL 9005), Gray aluminum (RAL9007)
	Other colors (RAL) on request

**Note:** Please also see the assembly instructions.



## Variants



### Housing chrome-plated (GCR) / handle chrome-plated (HCR)

	Spring force normal		Spring force reinforced	
	Openable from the inside (NPI)	Non-openable from the inside (NPS)	Openable from the inside (VPI)	Non-openable from the inside (VPS)
Lockable (AB)	<b>6188-020251</b>	<b>6188-020326</b>	6188-020612	6188-020074
Non-lockable (NAB)	<b>6188-020252</b>	<b>6188-020166</b>	6188-020613	6188-020028



### Housing plastic (GKU) / handle chrome-plated (HCR)

	Spring force normal		Spring force reinforced	
	Openable from the inside (NPI)	Non-openable from the inside (NPS)	Openable from the inside (VPI)	Non-openable from the inside (VPS)
Lockable (AB)	<b>6188-020225</b>	6188-090220	6188-090230	6188-090240
Non-lockable (NAB)	<b>6188-020224</b>	6188-020230	6188-090231	6188-090241



### Housing plastic (GKU) / handle black (RAL 9005)

	Spring force normal		Spring force reinforced	
	Openable from the inside (NPI)	Non-openable from the inside (NPS)	Openable from the inside (VPI)	Non-openable from the inside (VPS)
Lockable (AB)	<b>6188-020226</b>	6188-090320	<b>6188-020228</b>	6188-090340
Non-lockable (NAB)	<b>6188-020223</b>	6188-020231	6188-090331	6188-090341



### Housing black (RAL 9005) / handle black (RAL 9005)

	Spring force normal		Spring force reinforced	
	Openable from the inside (NPI)	Non-openable from the inside (NPS)	Openable from the inside (VPI)	Non-openable from the inside (VPS)
Lockable (AB)	<b>6188-020249</b>	6188-090420	6188-020430	6188-090440
Non-lockable (NAB)	6188-090411	6188-090421	6188-090431	6188-090441



### Housing grey aluminum (RAL 9007) / handle grey aluminum (RAL 9007)

	Spring force normal		Spring force reinforced	
	Openable from the inside (NPI)	Non-openable from the inside (NPS)	Openable from the inside (VPI)	Non-openable from the inside (VPS)
Lockable (AB)	<b>6188-020250</b>	6188-090520	6188-090530	6188-090540
Non-lockable (NAB)	6188-090511	6188-090521	6188-090531	6188-090541

#### Strikes & accessories see page 12

Unlisted combinations of housing, handle, lockable/non-lockable, normal spring force/reinforced spring force & openable/non-openable from the inside, as well as colors of housing & handle can be ordered on request with a minimal order quantity. Different locking variants available.





## Edge-mounted latch Series 6190 ERGO

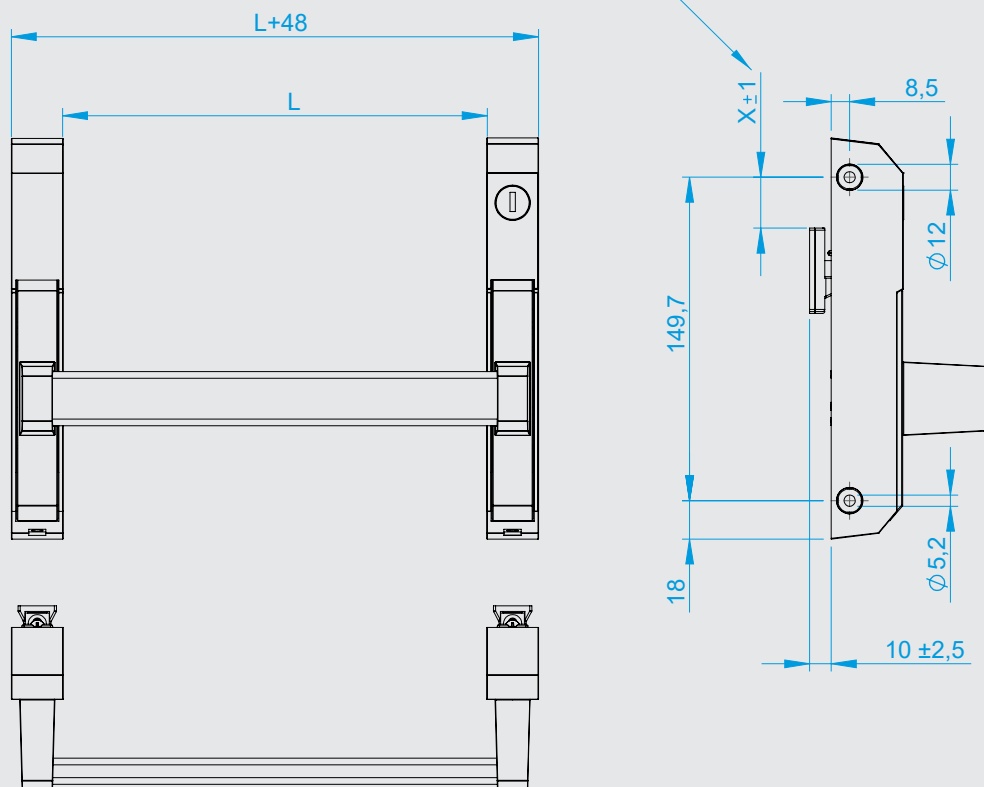


- Edge-mounted drawer closure for refrigerated cabinets, commercial refrigerators, cold storage cells, counter construction and so on
- [Self-closing latch with adjustable locking force](#)
- lockable/non-lockable
- [Different locking variants available](#)
- With normal/reinforced spring force
- [Openable from inside/non-openable from inside](#)
- Powder-coated finishes in custom RAL colors on request





Determine position of the strike with stop gauge 6188-020258



Enough with drafts! This edge-mounted latch for drawers does not allow any warm breezes to pass through and reliably secures food in refrigerated cabinets, commercial refrigerators or cold storage cells. The self-closing latch with adjustable locking force is available both with and without a lock. When ordering, it is important to order a locking and a non-locking latch and to specify the desired length of the handle bar. Due to normal, optionally also reinforced spring force, interruptions in the cold chain are virtually impossible. It's a tried and tested latching system and looks good because these latches are either chrome-plated or powder coated. In the case of the latter, any RAL color can be chosen with a minimal order quantity.

### Materials

Base	Die-cast zinc, zinc-plated
Housing:	Die-cast zinc, chrome-plated or plastic
Handle:	Die-cast zinc, chrome-plated
Strikes:	Die-cast zinc, chrome-plated
Latch:	Die-cast zinc, zinc-plated
Cover cap:	Plastic
Pins:	Steel, zinc-plated
Springs:	Spring steel
Screws:	Zinc-plated
Handle bar mount:	Die-cast zinc, cathodic dip coating (CDC)
Handle bar:	Aluminum, anodized
Other components:	Plastic or die-cast zinc

Finish: Chrome plated, powder-coated

Standard colors: Chrome  
 Black (RAL 9005), silver anodized  
 Other colors (RAL) on request

**Note:** Please also see the assembly instructions.

## Variants



### Housing chrome-plated (GCR) / handle chrome-plated (HCR)

	Spring force normal		Spring force reinforced	
	Openable from the inside (NPI)	Non-openable from the inside (NPS)	Openable from the inside (VPI)	Non-openable from the inside (VPS)
Lockable (AB)	<b>6190-021023</b>	6190-090120	6190-090130	6190-090140
Non-lockable (NAB)	<b>6190-020998</b>	6190-090121	6190-090131	6190-090141



### Housing plastic (GKU) / handle chrome-plated (HCR)

	Spring force normal		Spring force reinforced	
	Openable from the inside (NPI)	Non-openable from the inside (NPS)	Openable from the inside (VPI)	Non-openable from the inside (VPS)
Lockable (AB)	<b>6190-021028</b>	6190-090220	6190-090230	6190-090240
Non-lockable (NAB)	<b>6190-021003</b>	6190-090221	6190-090231	6190-090241



### Housing plastic (GKU) / handle powder-coated (RAL 9005)

	Spring force normal		Spring force reinforced	
	Openable from the inside (NPI)	Non-openable from the inside (NPS)	Openable from the inside (VPI)	Non-openable from the inside (VPS)
Lockable (AB)	<b>6190-021029</b>	6190-090320	6190-021039	6190-090340
Non-lockable (NAB)	<b>6190-021004</b>	6190-090321	6190-021014	6190-090341



### Housing black (RAL 9005) / handle black (RAL 9005)

	Spring force normal		Spring force reinforced	
	Openable from the inside (NPI)	Non-openable from the inside (NPS)	Openable from the inside (VPI)	Non-openable from the inside (VPS)
Lockable (AB)	<b>6190-021026</b>	6190-090420	6190-090430	6190-090440
Non-lockable (NAB)	<b>6190-021000</b>	6190-090421	6190-090431	6190-090441



### Housing silver anodized / handle silver anodized

	Spring force normal		Spring force reinforced	
	Openable from the inside (NPI)	Non-openable from the inside (NPS)	Openable from the inside (VPI)	Non-openable from the inside (VPS)
Lockable (AB)	<b>6190-021025</b>	6190-090520	6190-090530	6190-090540
Non-lockable (NAB)	<b>6190-021005</b>	6190-090521	6190-090531	6190-090541

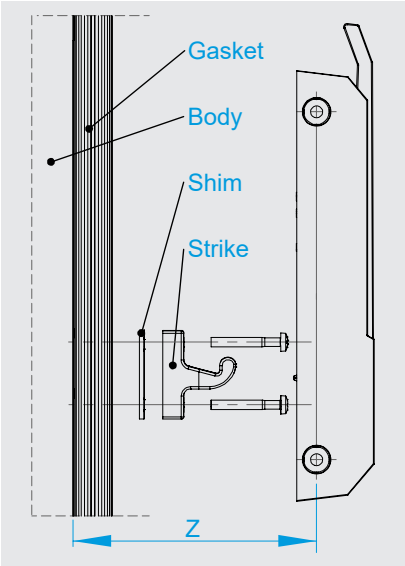
For drawer lock 6190 1x NAB, 1x AB and 1x handle bar is required. Please specify length (L).

Unlisted combinations of housing, handle, lockable/non-lockable, normal spring force/reinforced spring force & openable/non-openable from the inside, as well as colors of housing & handle can be ordered on request with a minimal order quantity. Different locking variants available.





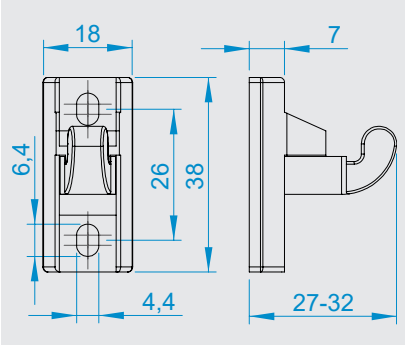
# Strike table for Ergo Series (6188 & 6190)



**Z dimensions for combination strike with shim 5mm**

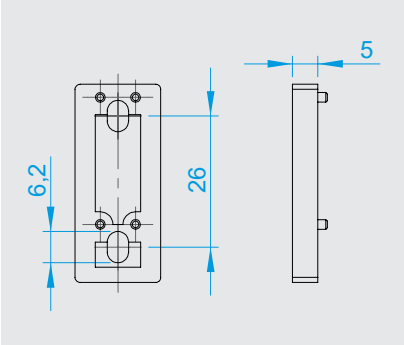
Strike	Without shim	1x shim	2x shim
Adjustable	Z = 16-21mm	Z = 21-26mm	Z = 26-31mm

## Strike



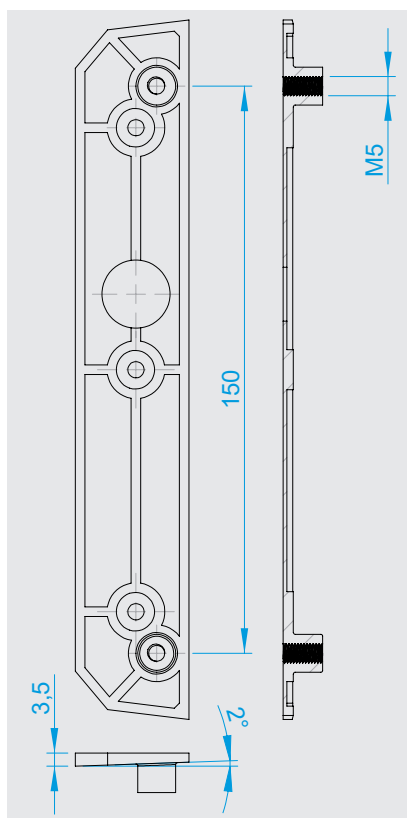
**6188-020207**  
Strike, chrome-plated,  
adjustable 5mm

## Shim



**6188-020208**  
Shim 5 mm, plastic

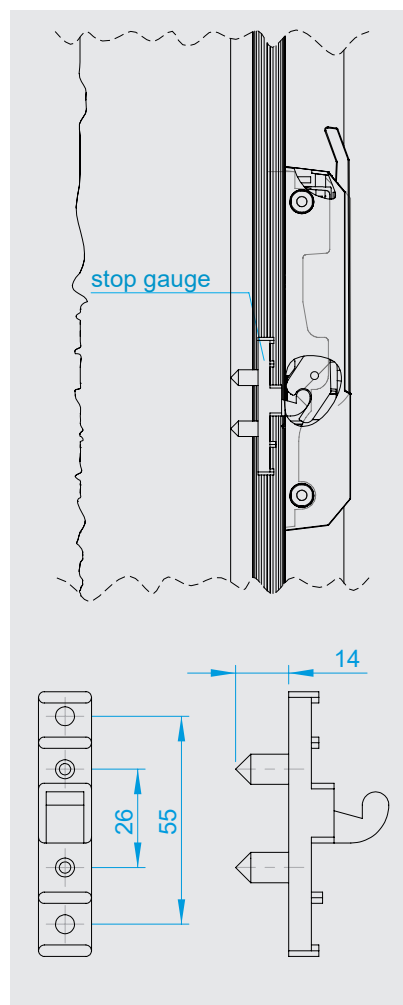
## Accessories for Ergo Series (6188 & 6190)



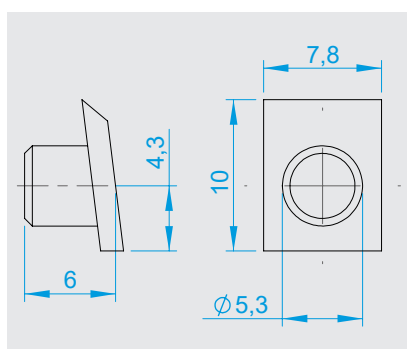
**6188-020506**  
 Adapter plate, plastic, slanted

### Assembly instructions for series 6188 & 6190

- Fasten latch on door, according to strike table
- Insert stop gauge until lock engages
- Press door against frame to mark mounting holes for the strike
- Screw on strike and shim according to the strike table
- Close door
- If the lock does not fully engage, screw in the adjustment screw, if necessary, pull the locking lug forward

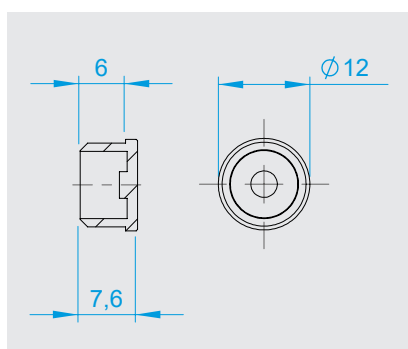


**6188-020258**  
 Stop gauge



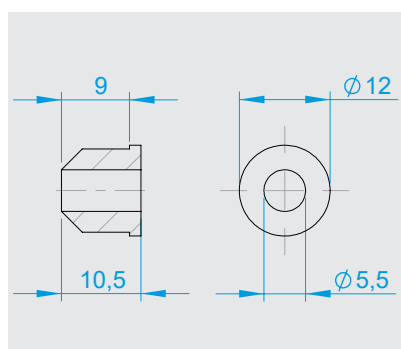
**Cover, plastic**

Black (RAL 9005)	<b>6188.0278</b>
Gray aluminum (RAL 9007)	<b>6188.0277</b>
White aluminum (RAL 9006)	<b>6188.0279</b>



**Cover plug, plastic**

Black (RAL 9005)	<b>6186.1826</b>
Gray aluminum (RAL 9007)	<b>6186.1827</b>
White aluminum (RAL 9006)	<b>6186.1830</b>



**Cover plug, plastic, with hole**

Black (RAL 9005)	<b>6186.2945</b>
------------------	------------------

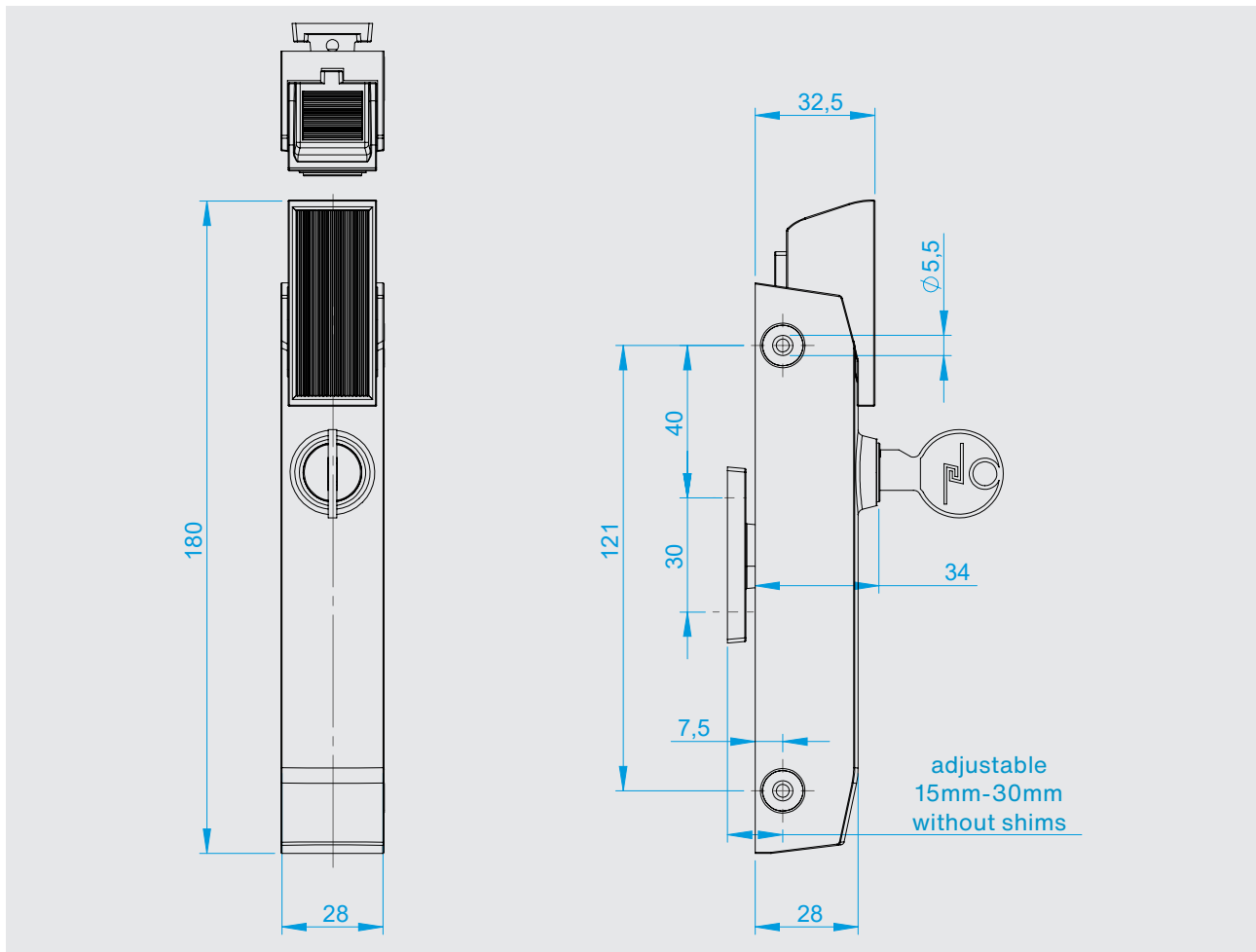


## Edge-mounted latch

### Series 6186 Presto



- Self-closing latch with adjustable locking force
- Lockable/non-lockable
- Pushbutton optionally available chrome-plated or made of plastic
- Custom colors (RAL) on request



The “PRESTO” system latches are self-latching, spring-loaded latches that are operated by a pushbutton. The pendulum strike has established itself as a suitable strike. The pendulum strike automatically searches for the correct position for the closure. This is particularly important for devices that are exposed to high temperature fluctuations (e.g. hot devices), and where this can cause considerable alignment difference between door and frame.

### Materials

Housing:	Die-cast zinc, chrome-plated
Cover:	Die-cast zinc, chrome-plated
Strikes:	Die-cast zinc, chrome-plated
Cover cap:	Plastic
Pushbutton:	Plastic or die-cast zinc, chrome-plated

Finish: Chrome-plated

Standard colors: Chrome, black

**Note:** Please also see the assembly instructions.

## Variants



**Chrome-plated housing  
Chrome-plated pushbutton**

	Openable from the inside (NPI)
Lockable (AB)	<b>6186-020198</b>
Non-lockable (NAB)	6186-020273

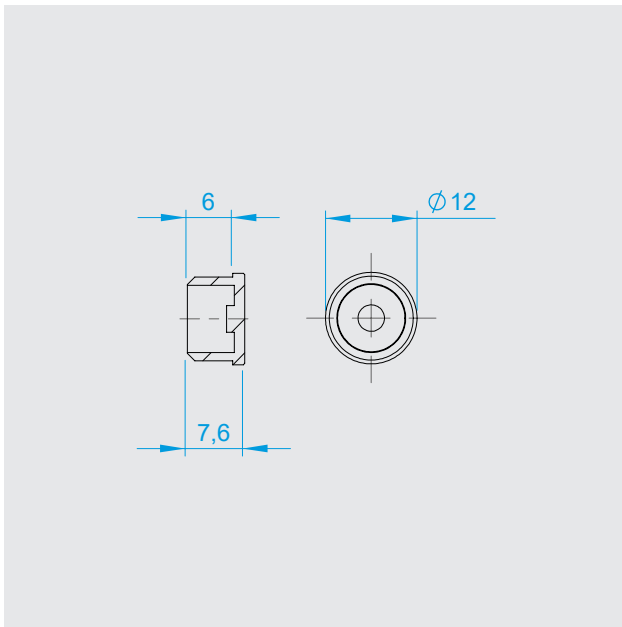


**Chrome-plated housing  
Plastic pushbutton**

	Openable from the inside (NPI)
Lockable (AB)	6186-020298
Non-lockable (NAB)	<b>6186-020297</b>

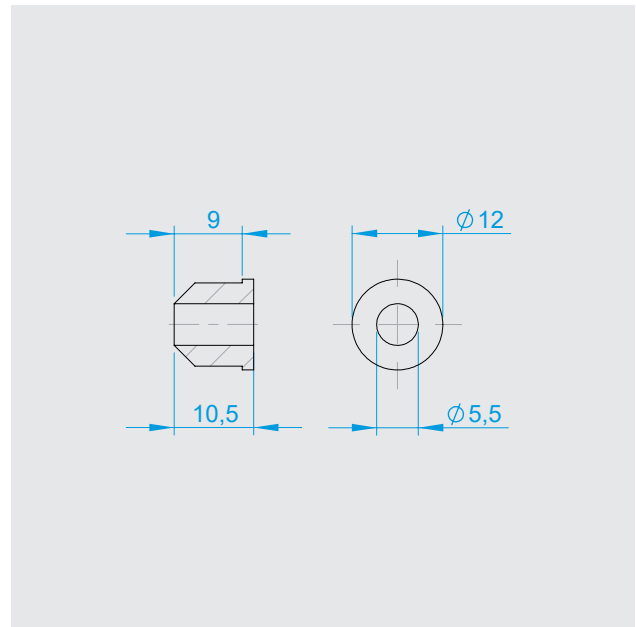
Different locking variants available.

## Accessories



**Cap, plastic**

Black (RAL 9005)	<b>6186.1826</b>
Gray aluminum (RAL 9007)	<b>6186.1827</b>
White aluminum (RAL 9006)	<b>6186.1830</b>

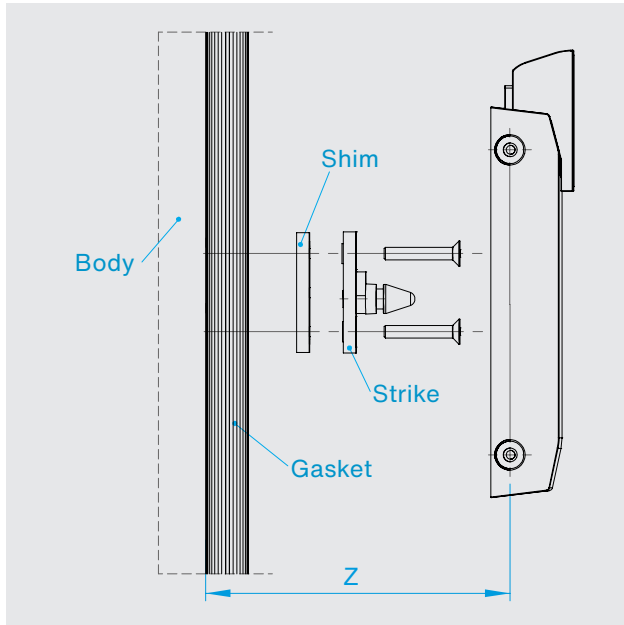


**Cap, with hole, plastic**

Black (RAL 9005)	<b>6186.2945</b>
------------------	------------------



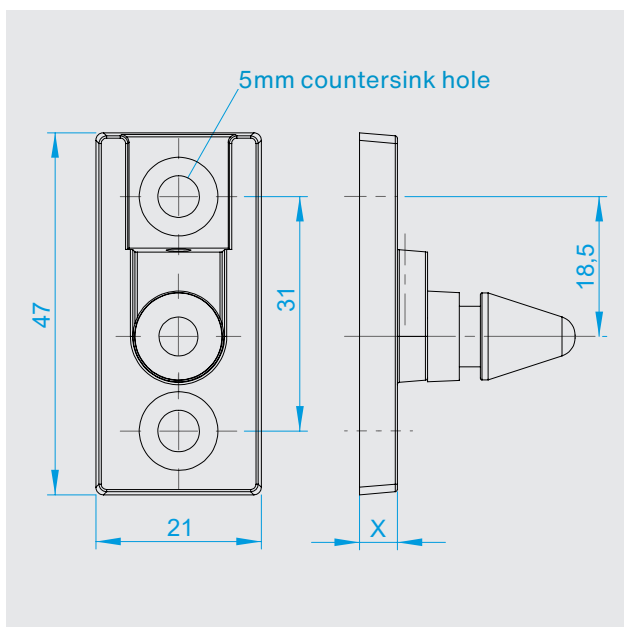
## Strike table



**Z dimensions for combination of strike with shim**

Strike	Without shim	1x Shim
X = 5 mm	Z = 15-20 mm	Z = 16-21 mm
X = 10 mm	Z = 10-25 mm	Z = 21-26 mm
X = 15 mm	Z = 25-30 mm	Z = 26-31 mm

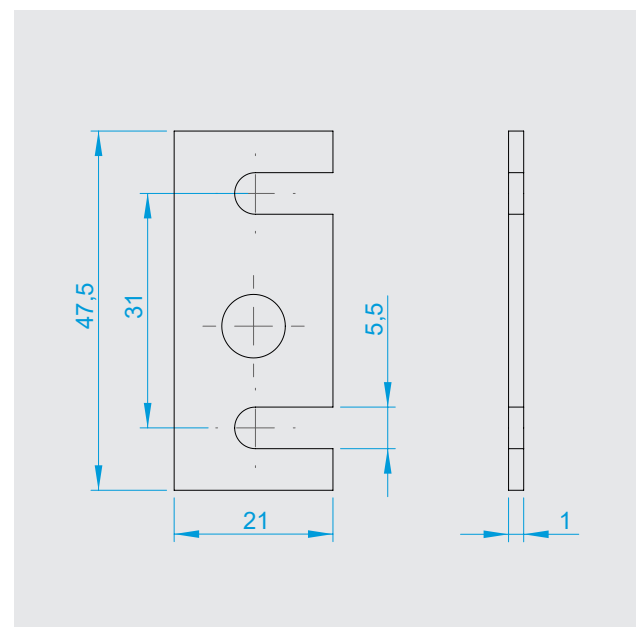
## Strike



**Strike, X mm, zinc, chrome-plated**

X = 5mm	<b>6186-020199</b>
X = 10mm	<b>6186-020294</b>
X = 15mm	<b>6186-020276</b>

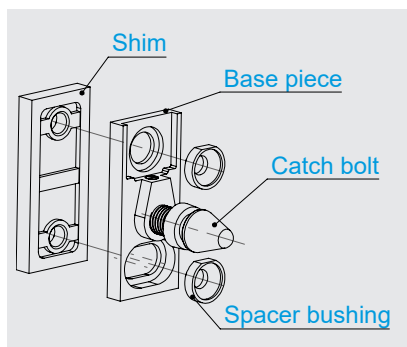
## Shims



**Shim, 1 mm, plastic**

X = 1mm	<b>6186-140087</b>
---------	--------------------

## Pendulum strike

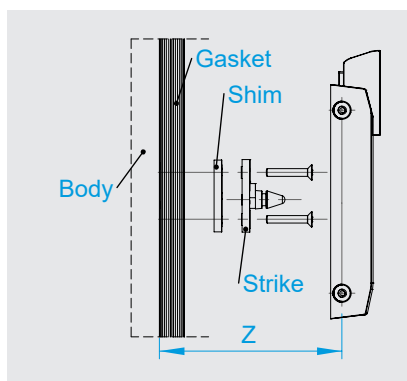


The pendulum strike can swing about its upper attachment point approx. 4 mm to each side. This compensates for the lateral offset, which can occur between the door and the frame in hot appliances due to temperature fluctuations.

The fixing points are marked by means of the stop gauge. The fastening screws are underlaid with the spacer bushing. This creates a play between the base piece and the frame, which allows the strike to move.

It is recommended to always shim the pendulum strike with the associated shim to ensure that the spacer bushings do not press into the frame and block the pendulum movement when tightening the mounting screws.

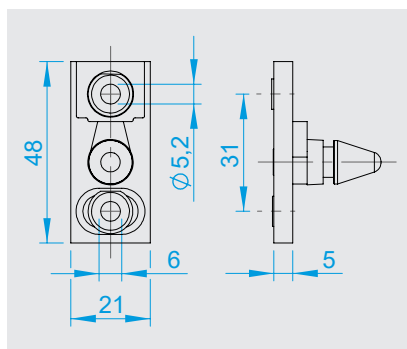
## Pendulum latch table



**Z dimensions for combination of pendulum strike with shim 5mm**

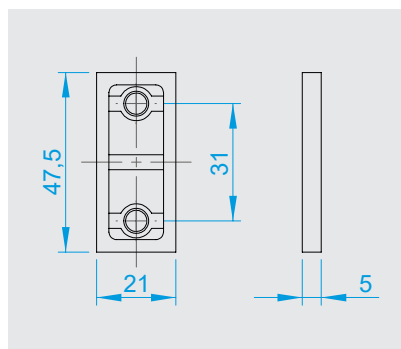
	Without shim	1x Shim
Pendulum strike	Z = 15-20mm	Z = 20-25mm

## Strike



**6186-020202**  
Pendulum strike, zink,  
chrome-plated

## Shim



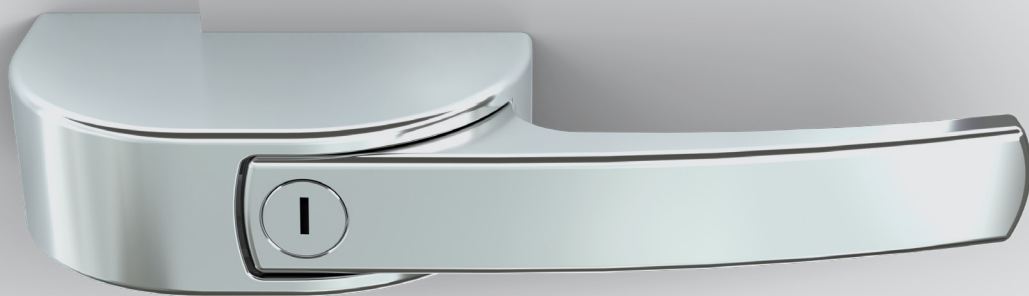
**6186-020423**  
Shim for pendulum strike, zink,  
chrome-plated

It is recommended to underlay the pendulum strike with this shim to ensure a proper spacing.



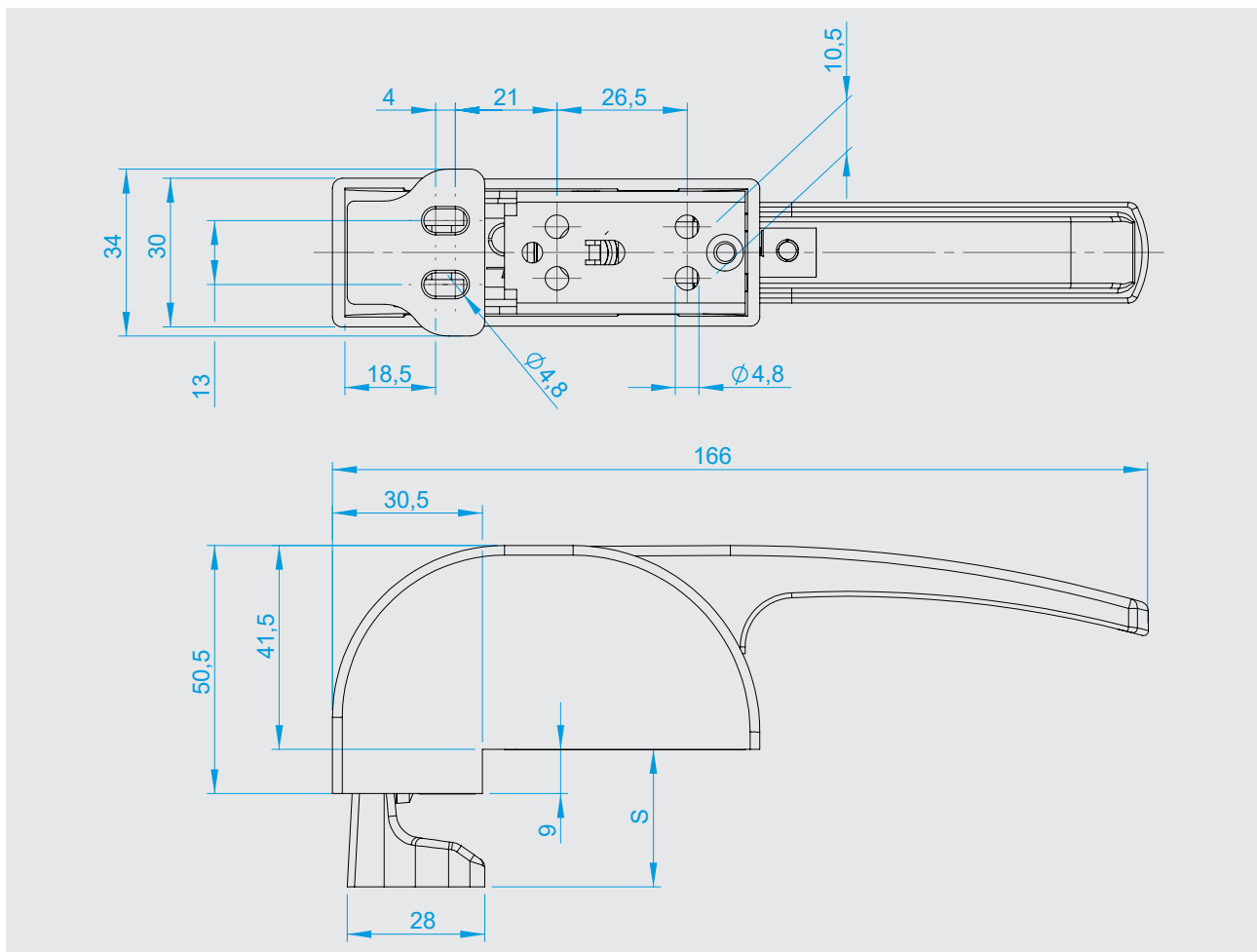
## Surface-mounted latch

### Series 6180



- Self-closing lock with sophisticated look
- [For refrigerated cabinets, commercial refrigerators, cold storage cells, etc.](#)
- Only lockable when the door is closed
- [Ergonomic handling](#)
- Strike height adjustable





Totally secured? Depends on the lock. The self-closing latch with a sophisticated look makes doors of refrigerated cabinets, commercial refrigerators or fresh food cells completely tight. The latch, which rests on the edge, literally puts a stop to unintentional opening. When the door is closed, it is lockable. This latch is easy to handle thanks to ergonomic operation and its height-adjustable strike.

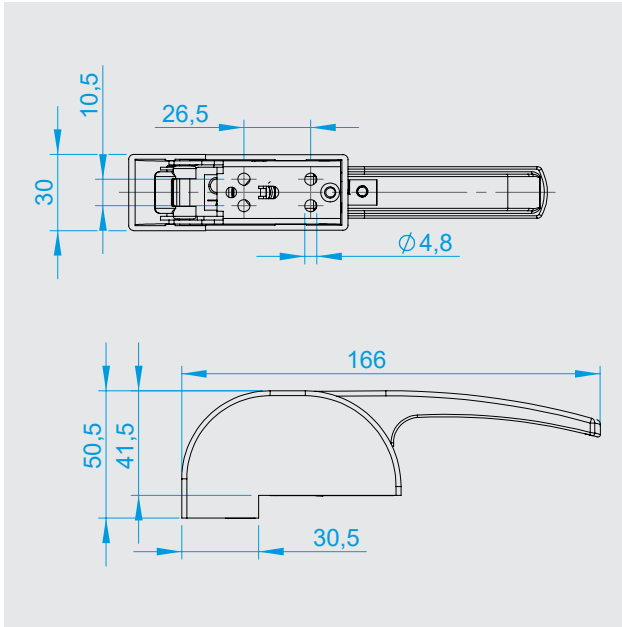
## Materials

Housing:	Die-cast zinc, chrome-plated
Handle:	Die-cast zinc, chrome-plated
Latch:	Plastic
Spring:	Spring steel, zinc-plated
Strikes:	Die-cast zinc, chrome-plated
Main bearing	Steel, zinc-plated
Punched parts:	Steel, zinc-plated
Bolt:	Steel, zinc-plated

Finish: Chrome-plated

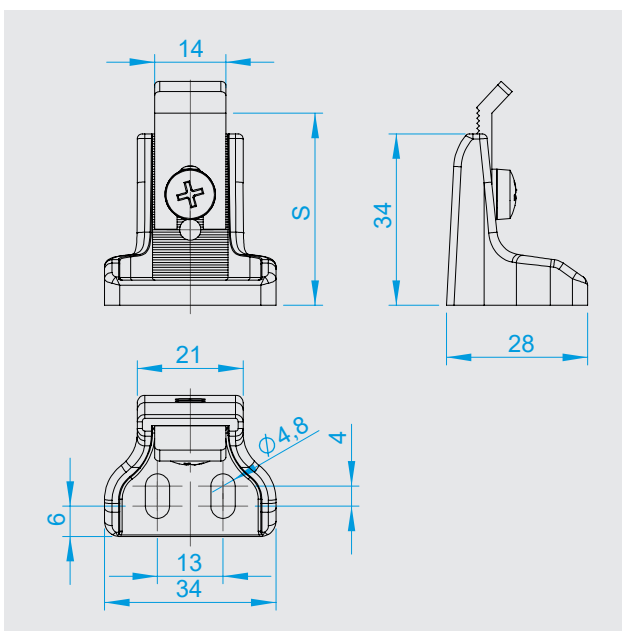
**Note:** Please also see the assembly instructions.

## Latch



**6180-020001**  
Latch, lockable

## Strike



**6180-020002**  
Strike, adjustable  $S = 21-34$  mm

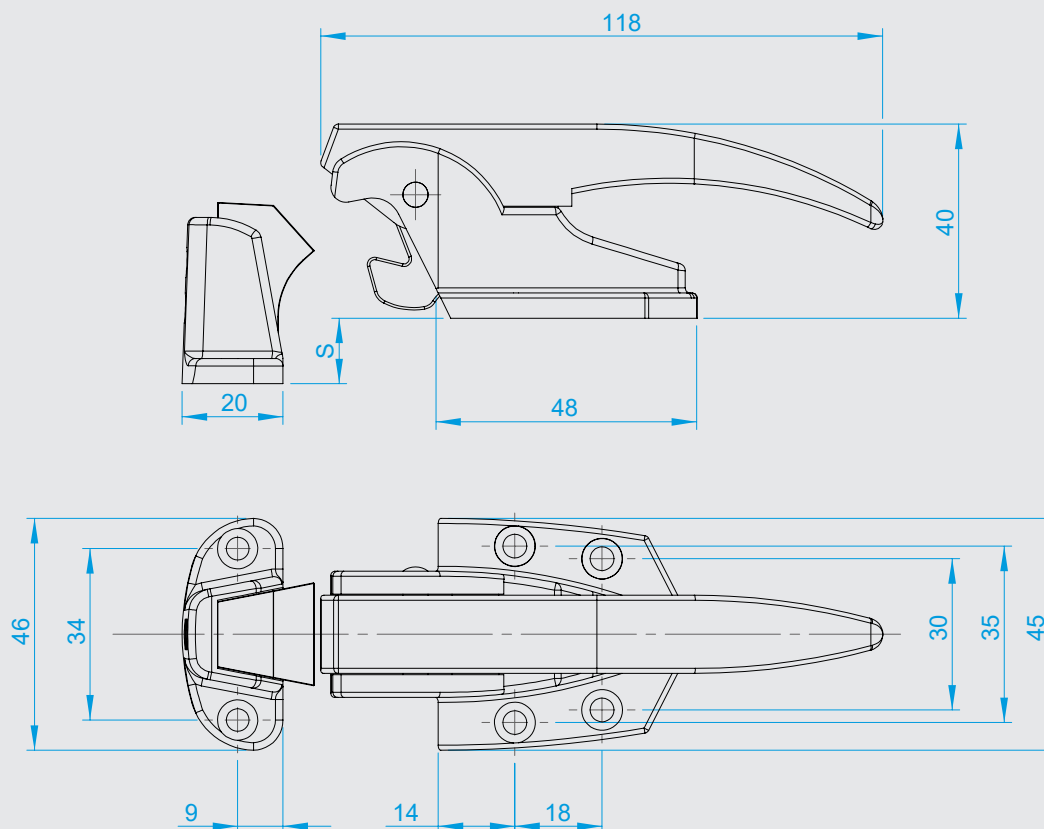


## Edge-mounted latch Series 6770



- Robust, self-closing latch with increased locking force
- For refrigerated cabinets, commercial refrigerators, cold storage cells and so on
- Application for demanding requirements
- Locking strike height adjustable





This durable, self-closing latch is primarily intended for refrigerated cabinets, commercial refrigerators and fresh food cells, but is also excellent for other applications. Thanks to robust material and height-adjustable strikes, this latch masters any requirement, no matter how demanding.

Dimension S gives the dimension from the edge of the body to the outer surface of the door. Due to the fact that the strike is height-adjustable by 18.5 mm, this latch can be mounted on doors with a thickness between 11.5 mm and 30 mm.

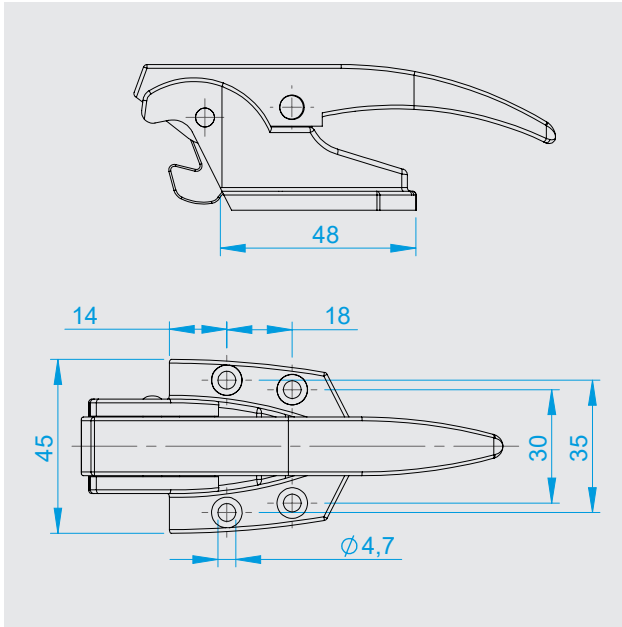
### Materials

Housing:	Die-cast zinc, chrome-plated
Handle:	Die-cast zinc, chrome-plated
Strikes:	Die-cast zinc, chrome-plated
Catch:	Brass
Bolt:	Stainless steel
Springs:	Spring steel, zinc-plated
Spring tray:	Steel, zinc-plated

Finish: Chrome-plated

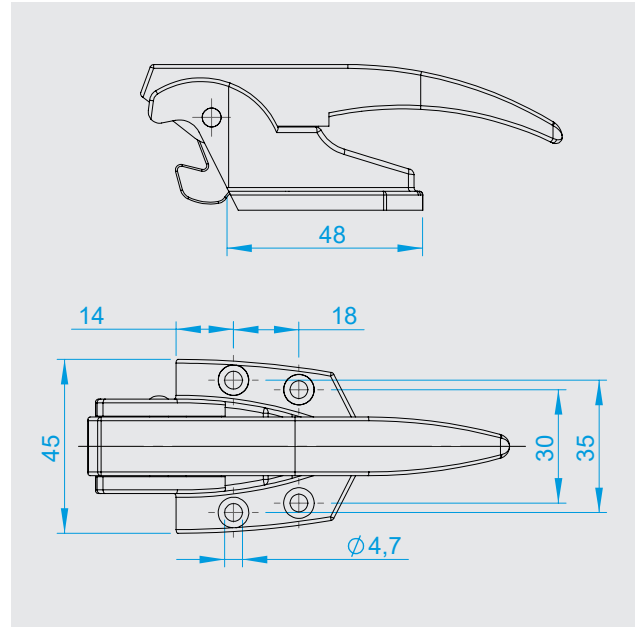
**Note:** Please also see the assembly instructions.

## Variants



### 6770-020210

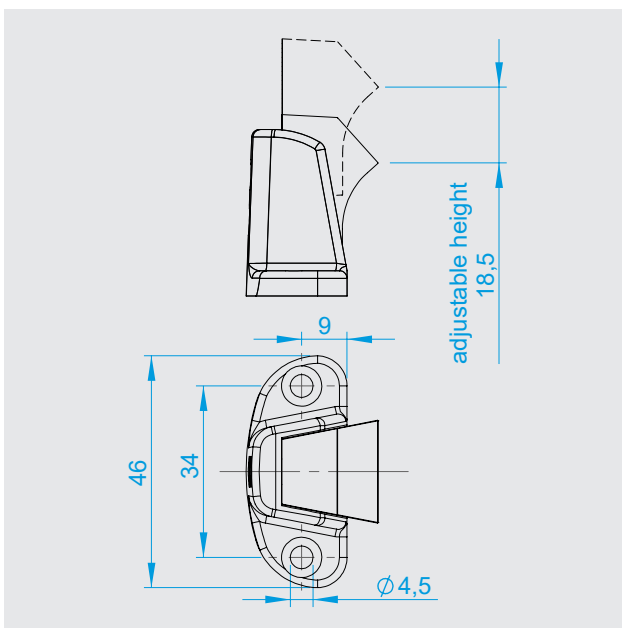
Latch with hole  
e.g. for padlock



### 6770-020211

Latch, non-lockable

## Strike

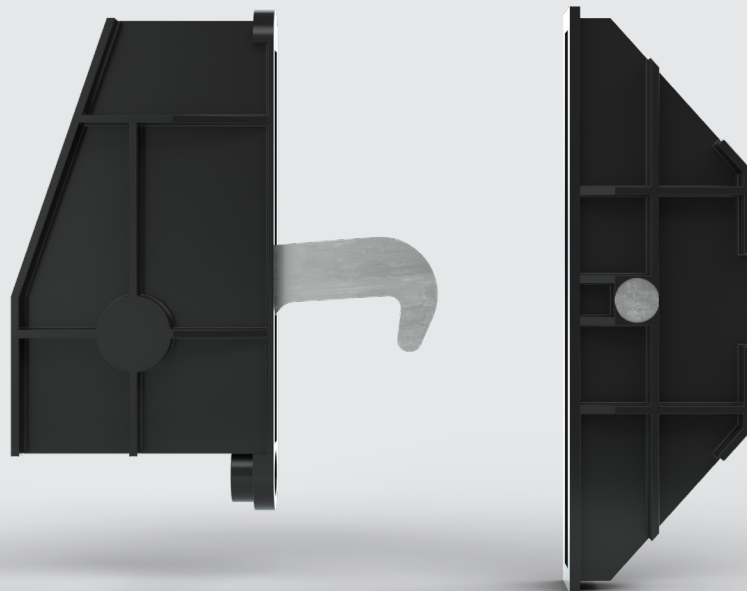


### 6770-020212

Strike, adjustable  
11.5mm - 30mm

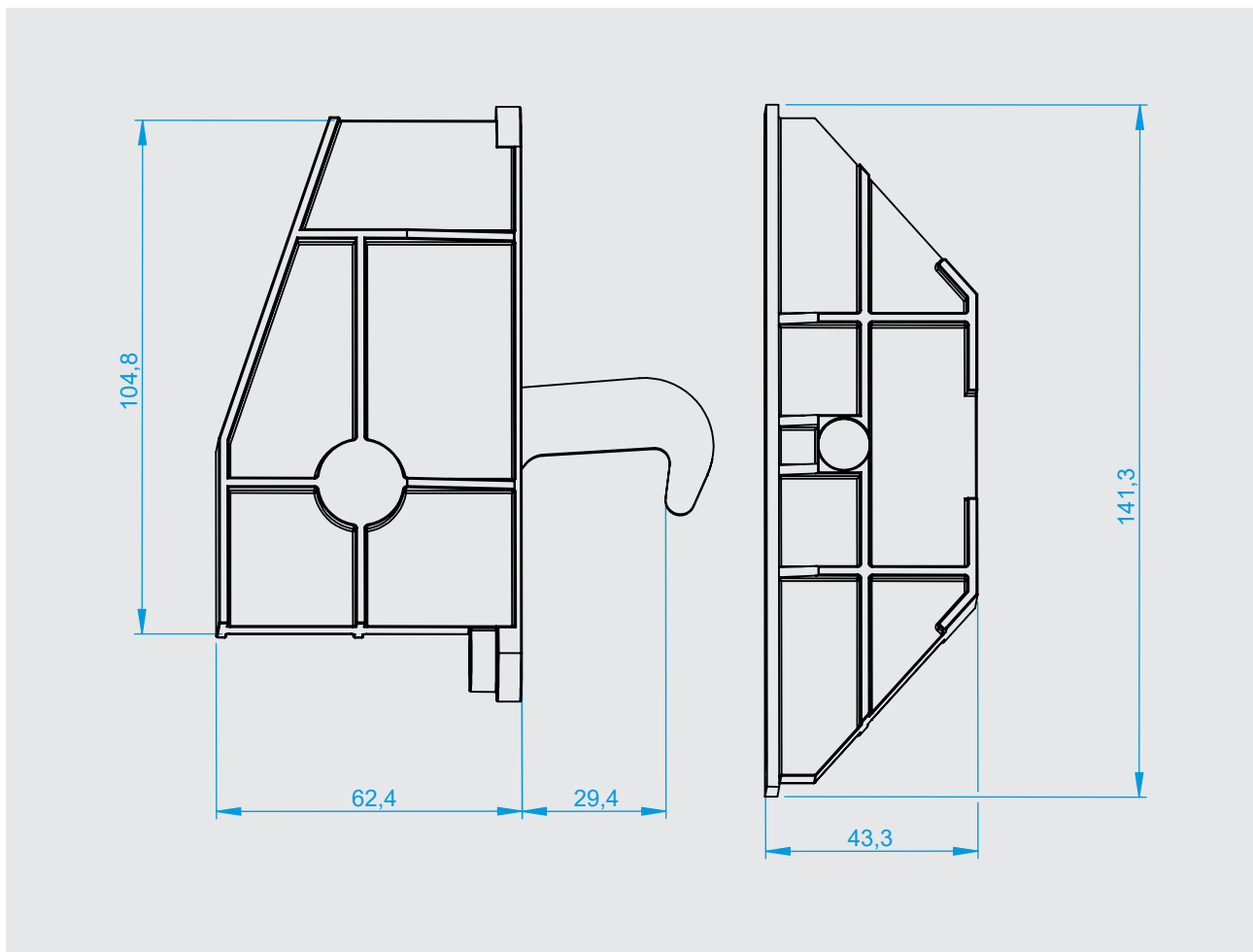


## Panel fastener Series 0253



- Latching system for foamed components
- Constant tightening force due to eccentric gear
- Tightening hook transport secured
- Suitable for multiple assemblies and disassemblies





This fastener is suitable for all types of foamed panels and allows for multiple assemblies and disassemblies. During panel manufacture, a thin plastic skin prevents foam from entering the fastener through the hole for the hexagonal key. This skin can later be easily pierced with a hexagonal key. An eccentric gear provides a durable tightening force and security. Speaking of secure:

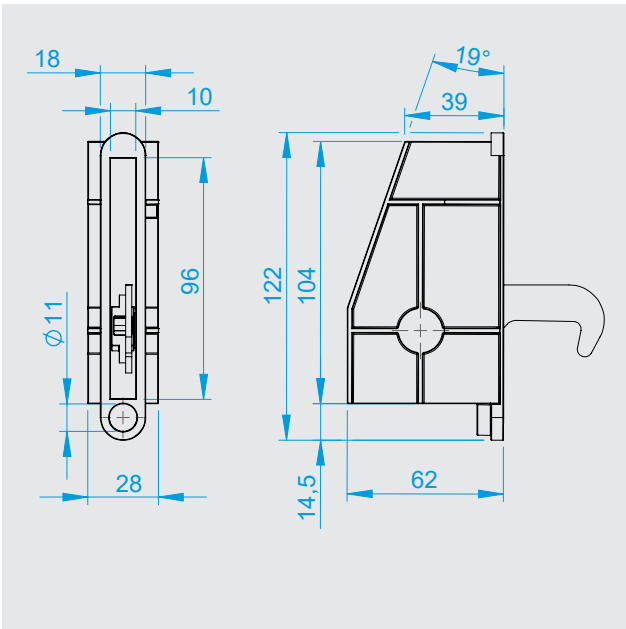
The tightening hook can be secured in place for transport.

### Materials

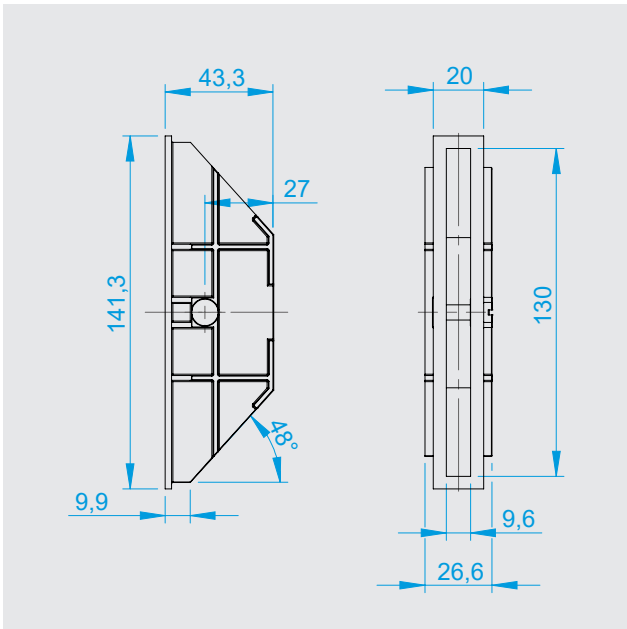
Housing:	Plastic
Hook:	Steel, zinc-plated
Eccentric gear:	Die-cast zinc
Bolt:	Steel, zinc-plated

**Note:** Please also see the assembly instructions.

Latch



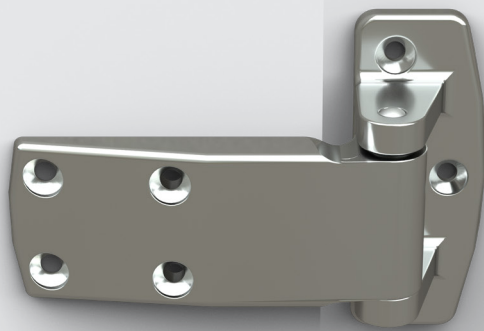
**0253-020001**  
Fastener



**0253-020002**  
Counter part

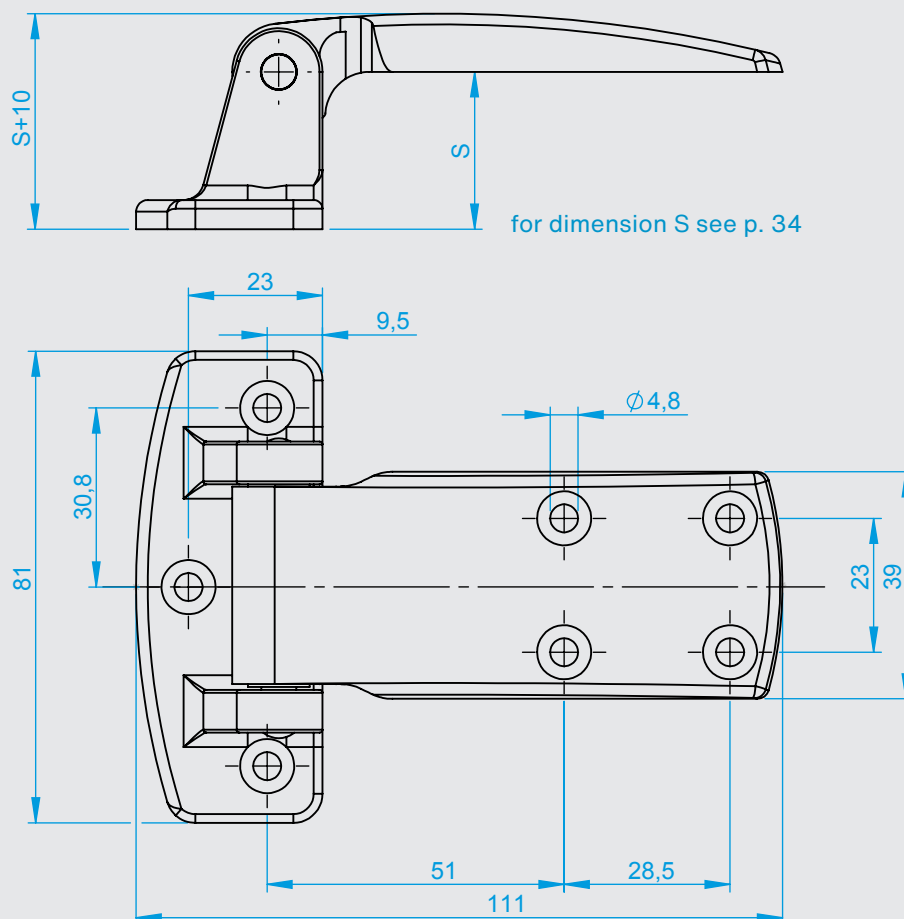


## Strap hinge Series 4480



- Classic, robust door hinge for high demands
- [For refrigerated cabinets, counter construction etc.](#)
- Can be used for both right-hand and left-hand doors
- [Available for various offsets](#)
- Support capacity with 2 hinges approx. 25 kg
- [Non-rising](#)
- max. opening angle 190°





for dimension S see p. 34

This classic and robust door hinge will always meet even the most demanding requirements. It is particularly suitable for counters and refrigerated cabinets, whose offset is between 20 mm and 30 mm. The strap hinge is easy to mount, no matter which side, because its symmetrical design works for both left- and right-hand doors. In addition, it is available for various door offsets. With the aid of a shim, the offset can be increased in 2 mm increments. The load capacity of two hinges is about 25 kg. The maximum opening angle is 190°.

### Materials

Hinge body: Die-cast zinc, chrome-plated

Hinge pin: Steel, zinc-plated

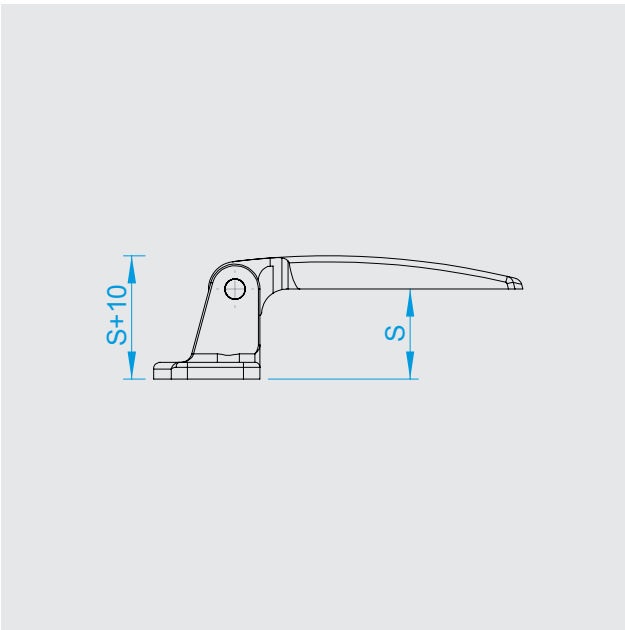
Sliding bushing: Plastic

Finish: Chrome plated, powder-coated

Standard colors: Chrome, black (RAL 9005)  
Other colors (RAL) on request

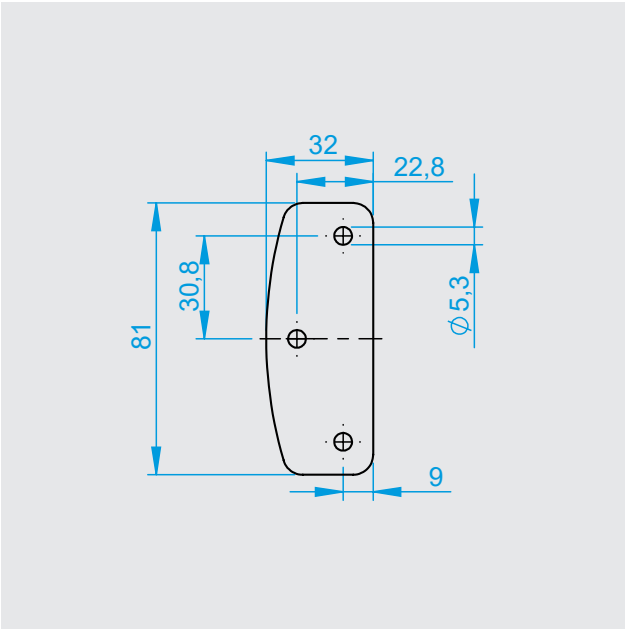
**Note:** Please also see the assembly instructions.

# Variants



	S = 20mm	S = 24mm	S = 28mm
Chrome-plated	<a href="#">4480-020060</a>	<a href="#">4480-020062</a>	<a href="#">4480-020064</a>
black (RAL 9005)	4480-090220	<a href="#">4480-020072</a>	4480-090228

# Accessories



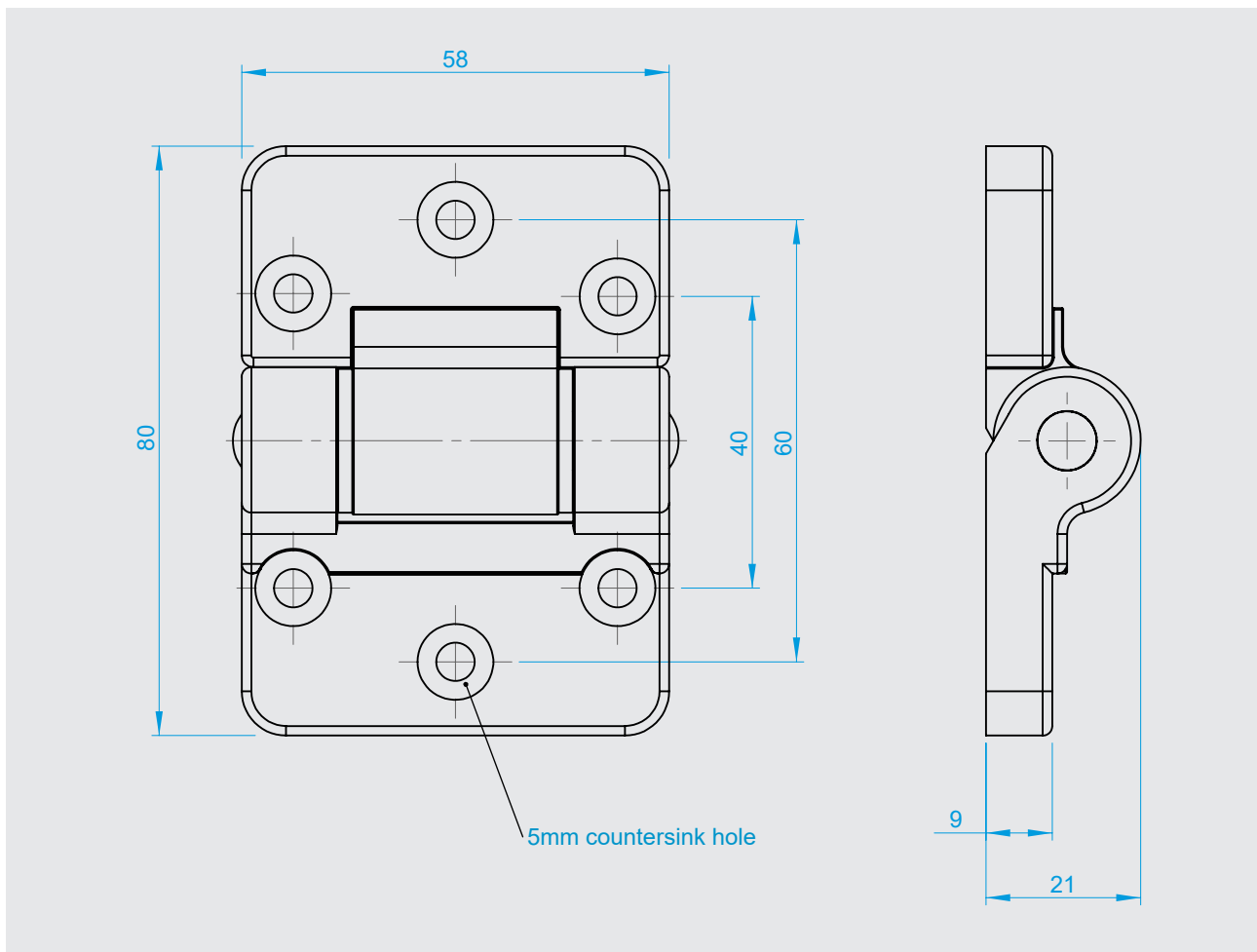
**4480-140054**  
Shim, for flange, 2 mm, plastic



## Flush hinge Series 7900



- For flush doors
- For refrigerated cabinets, counter construction and so on
- Can be used either horizontally or vertically
- Support capacity with 2 hinges approx. 25 kg



### Hinge

Chrome-plated	<b>7900-020016</b>
white aluminum (RAL 9006)	<b>7900-020015</b>

This hinge for flush applications was initially developed for chests. But it has a lot more going for it: It is now used in all kinds of areas where flush opening solutions are required - such as refrigerated cabinets or counters. It can be used either horizontally or vertically on either side and holds up to 25 kg in position in a double pack.

### Materials

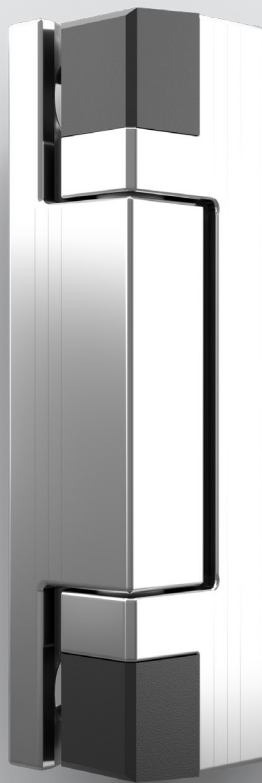
Hinge body:	Die-cast zinc, chrome-plated
Hinge pin:	Steel, zinc-plated
Sliding bushing:	Plastic
Finish:	Chrome-plated, powder-coated
Standard colors:	Chrome, white aluminum (RAL 9006) Other colors (RAL) on request

**Note:** Please also see the assembly instructions.

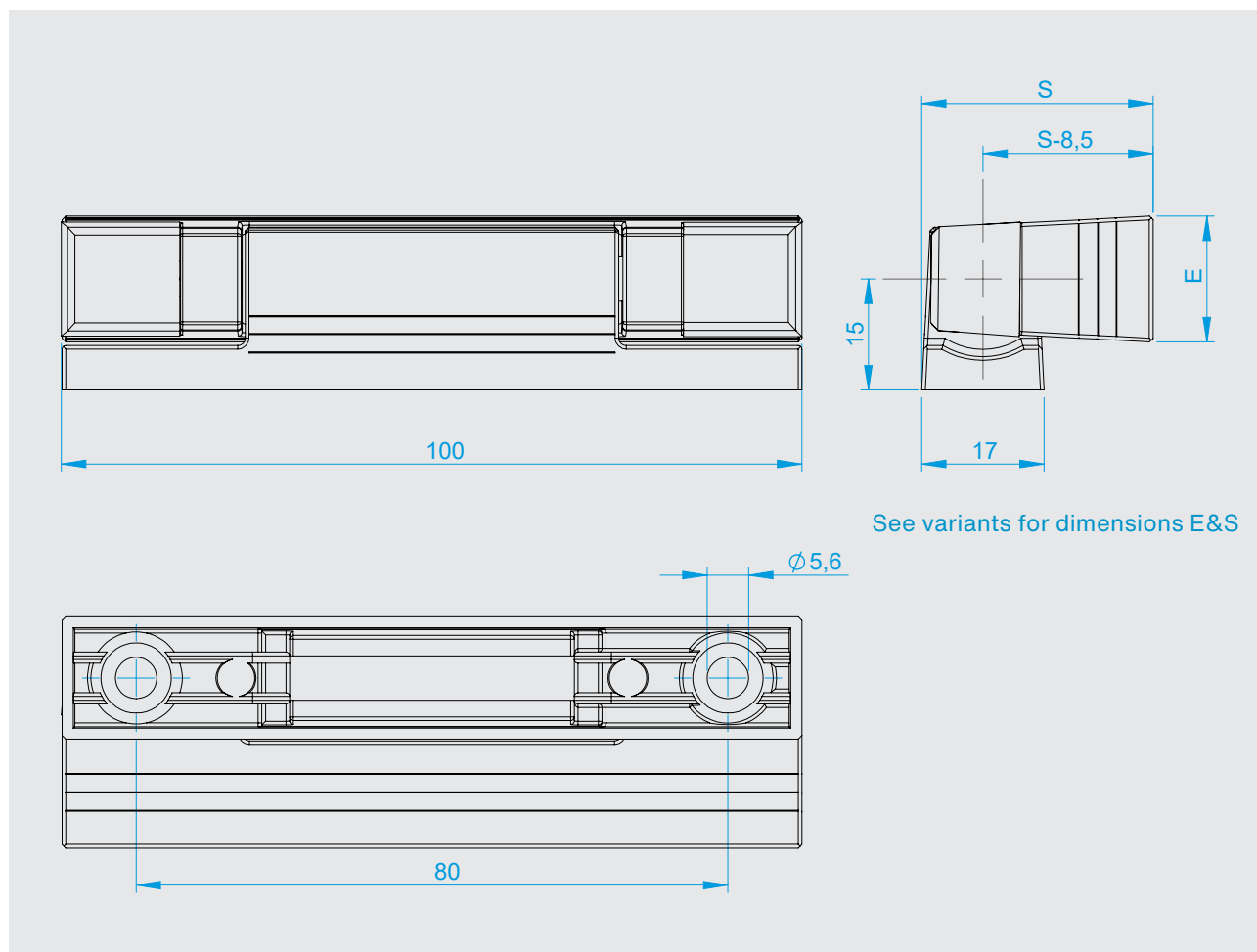




## Edge-mounted hinge Series 4500



- Functional door hinge in modern design and sophisticated look
- [For refrigerated cabinets, counters etc.](#)
- Simple and quick assembly
- [Available for various door offsets](#)
- Disassembly protection
- [Can be used for both left- and right hand doors](#)
- Load capacity with 2 hinges approx. 25 kg
- [Offset min. 21 mm](#)



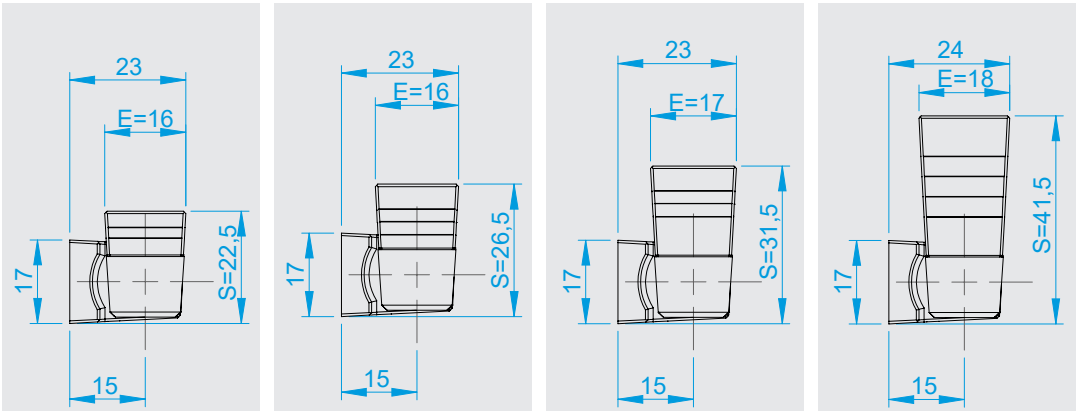
Perfection especially for corners and edges. This functional door hinge in a sophisticated and modern design fits perfectly into the world of Ergo and Presto systems. It is suitable for refrigerated cabinets and counters of any kind, because it is available for various door offsets. Don't be deceived by the simple and quick assembly of this edge-mounted hinge, because it has an extremely secure disassembly protection. It can be used for both left- and right-hand doors and, as a duo, can lift approx. 25 kg.

### Materials

Hinge body:	Die-cast zinc, chrome-plated
Cover cap:	Plastic
Hinge pin:	Steel, zinc-plated
Finish:	Chrome-plated, cathodic dip coating (CDC)
Standard colors:	Chrome, black

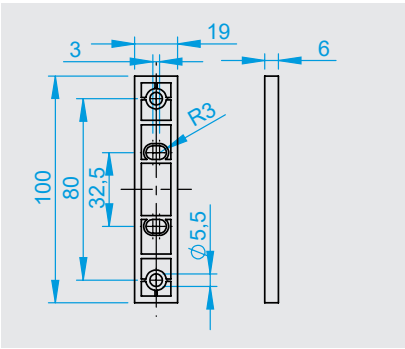
**Note:** Please also see the assembly instructions.

# Variants

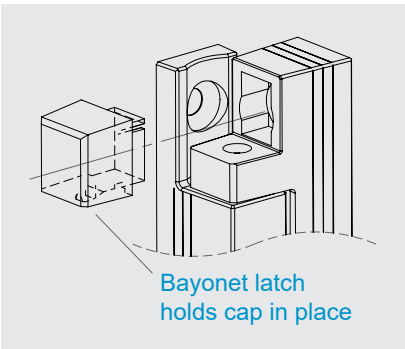


	E = 16 mm S = 22,5 mm	E = 16 mm S = 26,5 mm	E = 17 mm S = 31,5 mm	E = 18 mm S = 41,5 mm
Chrome-plated	4500-020433	4500-020460	<b>4500-020430</b>	4500-020432
Trowal/ chrome-plated	4500-090214	4500-090218	<b>4500-020420</b>	4500-090233
CDC black	4500-090314	4500-090318	<b>4500-020410</b>	4500-020412
Flange chrome-plated Strap CDC black	<b>4500-020400</b>	4500-090418	4500-090440	4500-090450

# Shim



**4500-020404**  
Shim, plastic, 6 mm



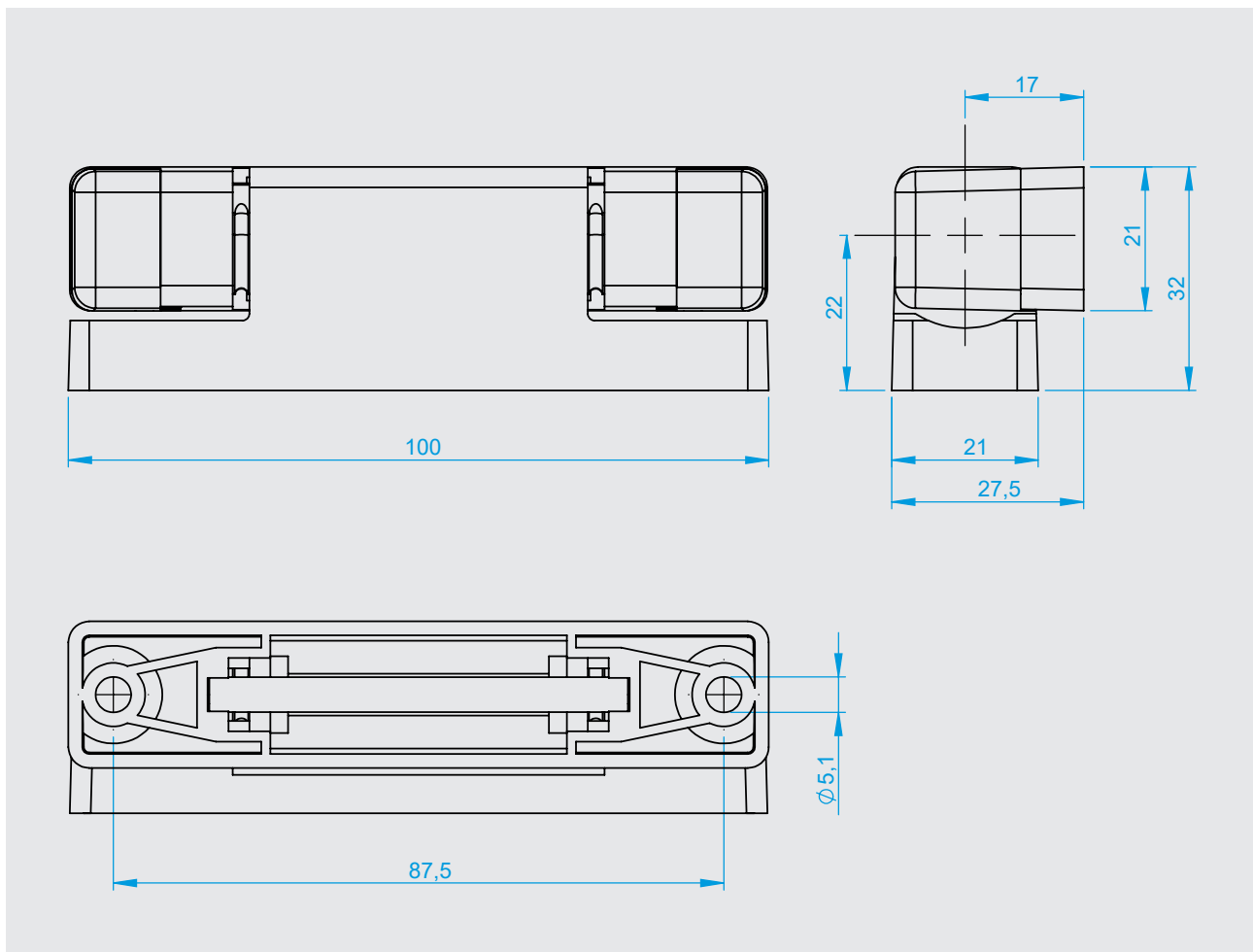


## Edge-mounted hinge/Spring-loaded hinge Series 4513



- Variant with spring for self-closing
- max. opening angle 190°
- Load capacity with 2 hinges approx. 20 kg
- Non-rising
- Disassembly protection
- Offset min. 27,5 mm





Closing? No problem! With its optional spring, this hinge offers a very special experience when it comes to closing. With an opening angle of less than  $45^\circ$ , the door closes almost by itself. Another nice thing: You don't have to exclude security with this hinge. Its caps act as dismantling protection, because they can only be slid on and off when the door is open. The load capacity of two edge-mounted hinges is about 20 kg. The maximum opening angle is  $190^\circ$ .

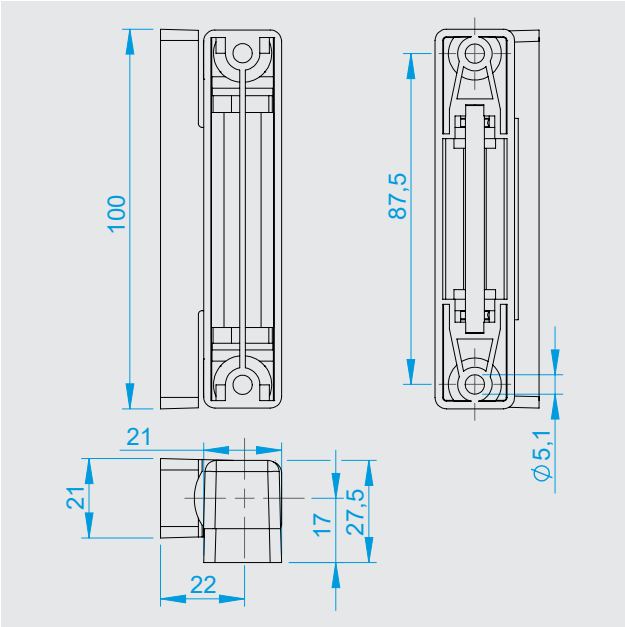
### Materials

Hinge body: Plastic  
 Cover cap: Plastic  
 Hinge pin: Stainless steel  
 Other components: Stainless steel

Standard colors: Black

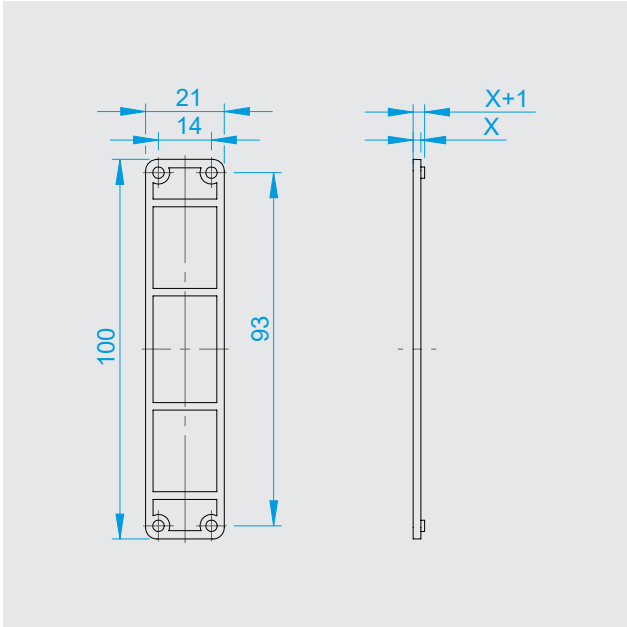
**Note:** Please also see the assembly instructions.

# Variants



Hinge, plastic

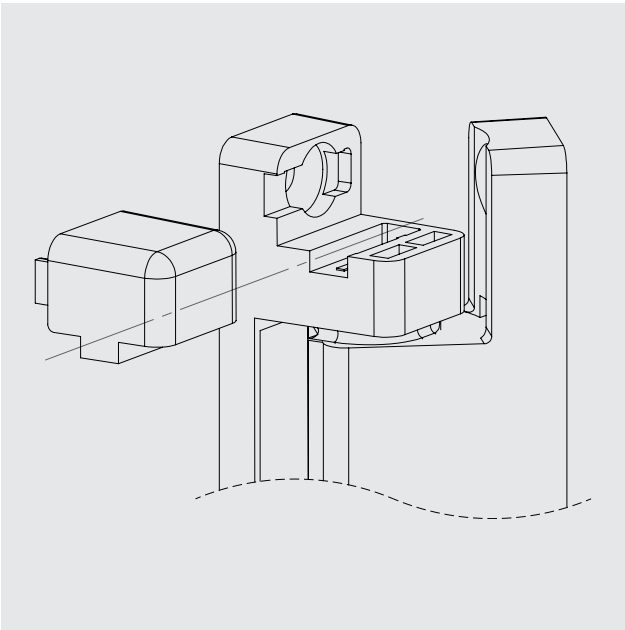
With spring	<b>4513-020650</b>
Without spring	4513-020651



Shim, plastic, X mm

Shim 4.5 mm	<b>4513-020652</b>
Shim 2 mm	<b>4513-020653</b>

Drawing shows hinge  
with opened door



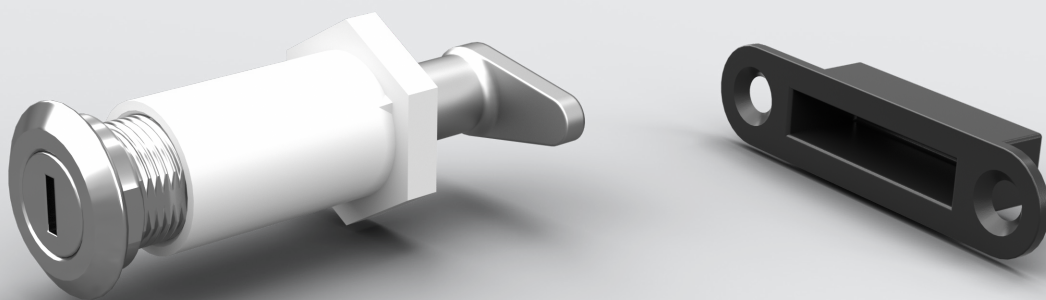
## Assembly instructions

- Attach hinge without protective caps
- Open door  $>90^\circ$
- Put on protective caps
- Close door

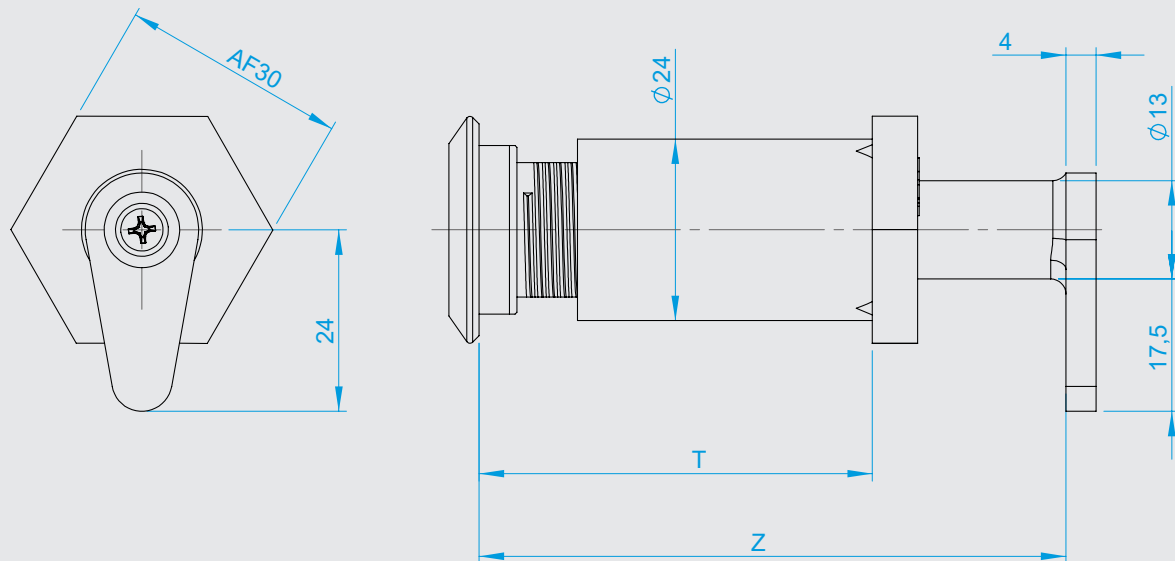


## Cylinder lock

### Series 5801



- Modular locking system
- For door thicknesses 28 mm - 63 mm
- Different locking variants available
- Easy assembly



This cylinder lock provides refrigerators and freezers with a reliable locking solution. The modular locking system is suitable for door thicknesses (T) from 28 mm to 63 mm. Despite its simple assembly, this lock allows diverse locking variants.

### Materials

Housing:	Die-cast zinc, chrome-plated
Locking bolt:	Die-cast zinc, chrome-plated
Locking detent:	Plastic
Pipe nut:	Plastic

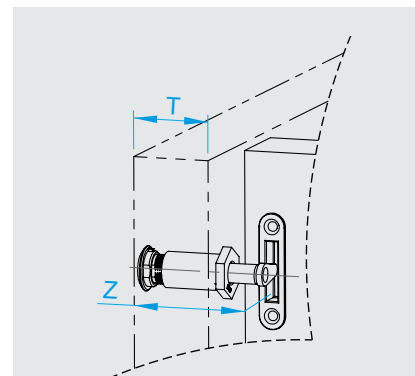
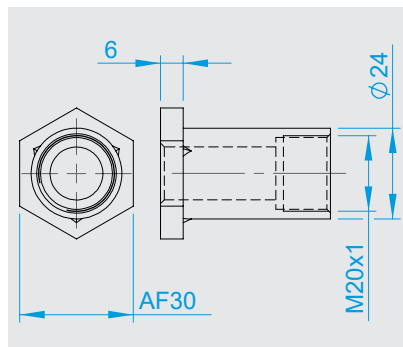
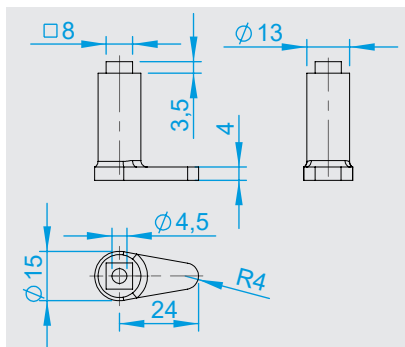
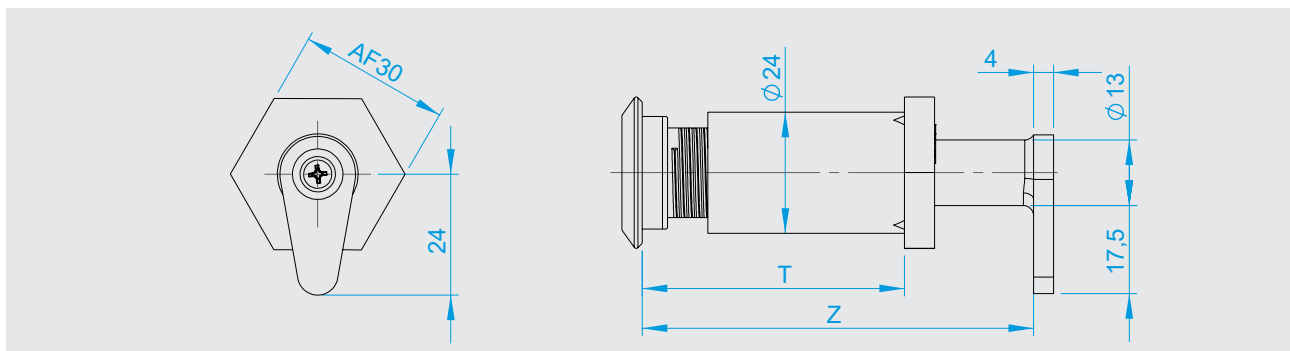
Finish: Chrome-plated

**Note:** Please also see the assembly instructions.

T = Door thickness



## Accessories



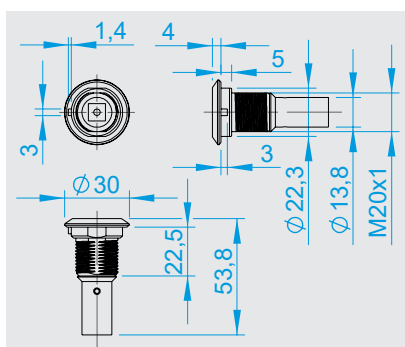
**Locking bolt**

Z = 65 mm	<b>5983-020648</b>
Z = 72,5 mm	<b>5983-020646</b>
Z = 78,5 mm	<b>5983-020633</b>
Z = 82,5 mm	<b>5983-020647</b>
Z = 85 mm	<b>5983-020636</b>

**Pipe nut**

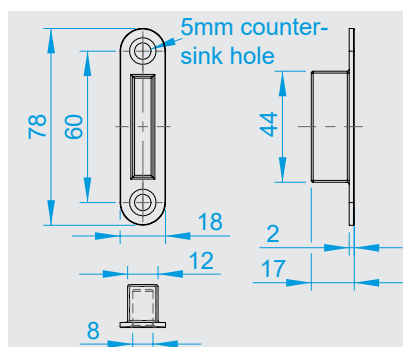
T = 28 - 32 mm	<b>5801-020828</b>
T = 35 - 42 mm	<b>5801-020829</b>
T = 42 - 49 mm	<b>5801-020830</b>
T = 49 - 56 mm	<b>5801-020831</b>
T = 56 - 63 mm	<b>5801-020832</b>

- Locking bolt height depending on door / drawer thickness and position of the lock box **Z**
- Pipe nut length depending on door / drawer thickness **T**

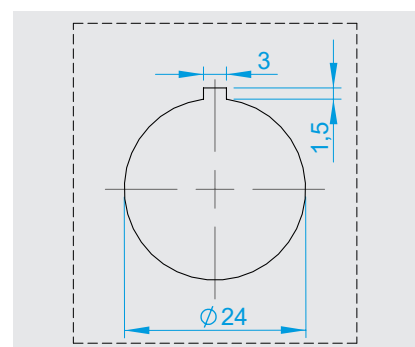


**5801-020833**  
Cylinder lock, chrome,  
with locking variant 1001

Different locking variants available.



**5802-010161**  
Lock box, plastic

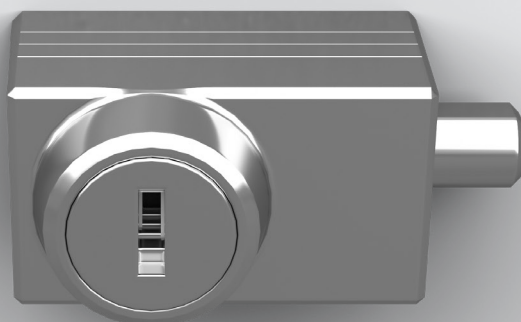


**Mounting hole pattern**

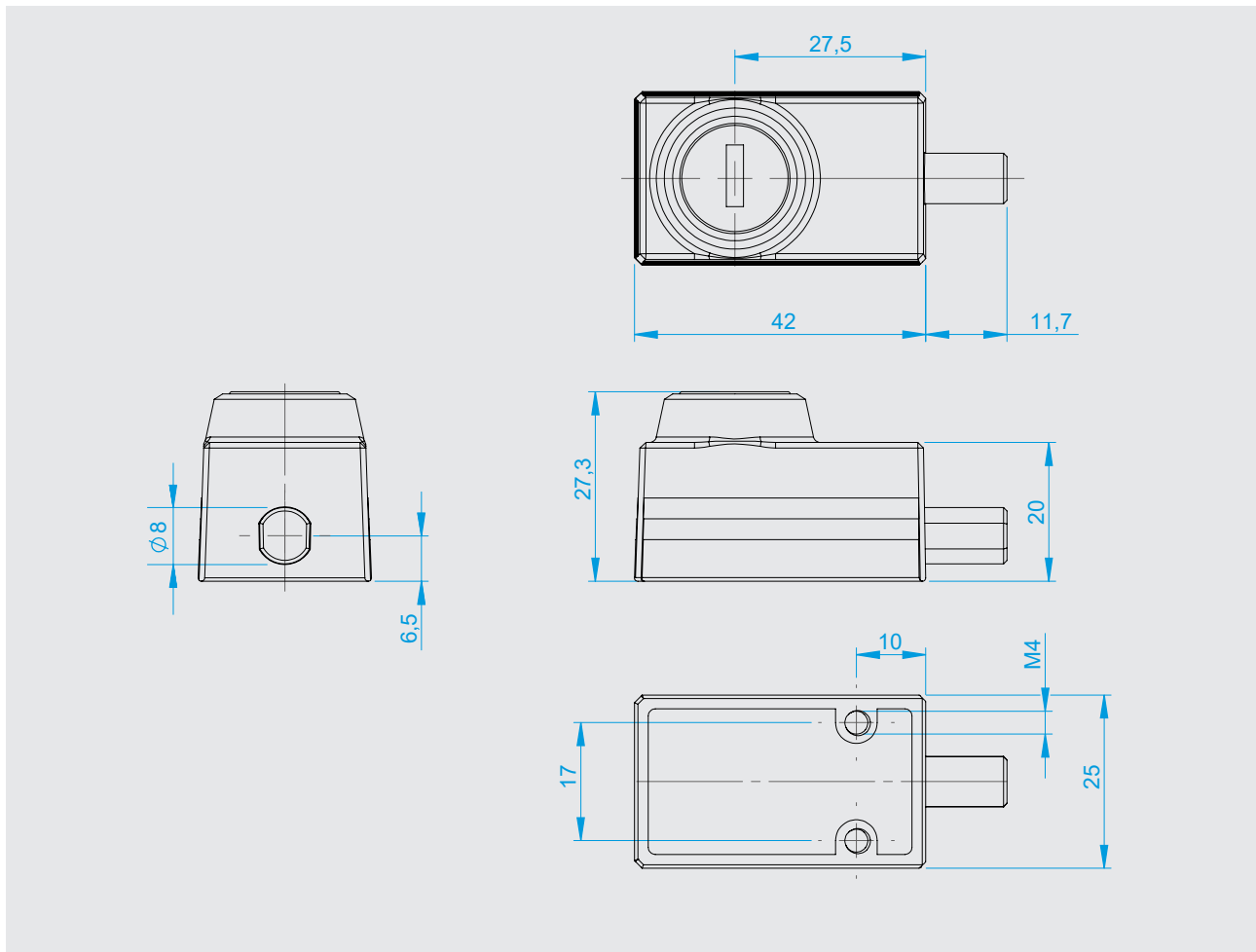


## Door and drawer lock

### Series 5811



- Robust locking system
- [For doors and drawers](#)
- Can be used for both left- and right-hand doors
- [Concealed screw connection](#)
- Key can be pulled out in “Closed” or “Open” position



### 5811-020001

#### Drawer latch

Different lockings available for the locking cylinders.

This lock can be used for more than drawers - it's also perfect for securing doors. The locking system impresses above all with its robustness and versatility. It has a concealed screw connection and can be used for both horizontal and vertical positions. In addition, the key can be pulled out not only in the "closed" position, but also in the "open" position.

#### Materials

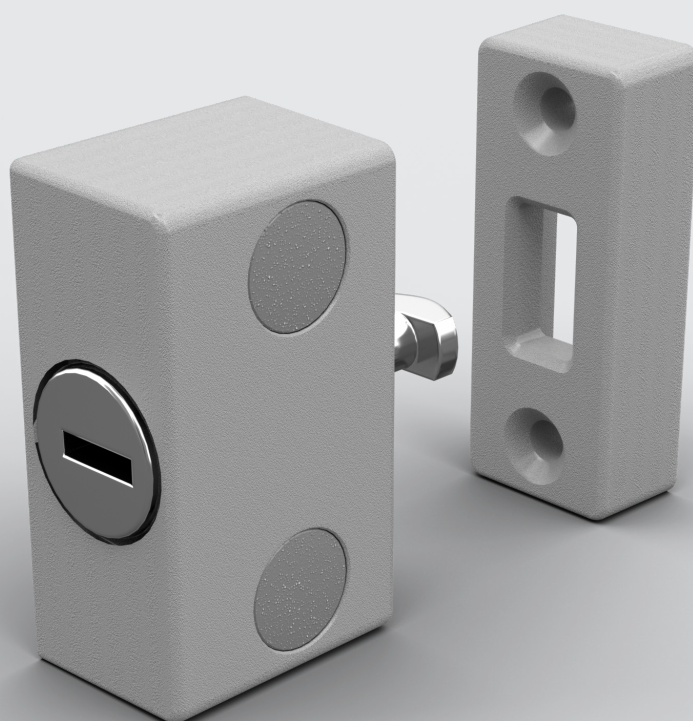
Housing:	Die-cast zinc, chrome-plated
Locking bolt:	Die-cast zinc, chrome-plated
Locking detent:	Plastic
Pipe nut:	Plastic

Finish: Chrome-plated

**Note:** Please also see the assembly instructions.

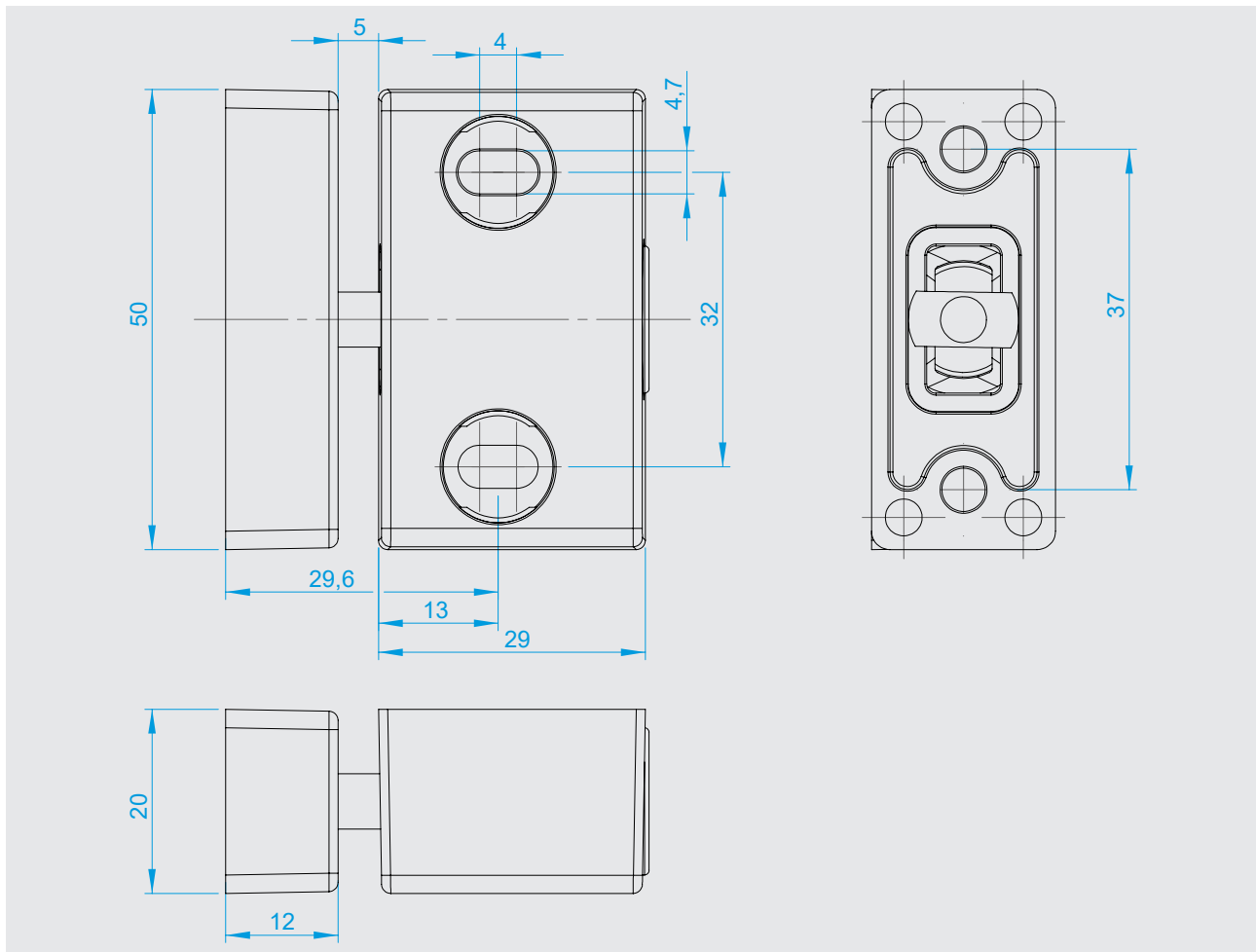


## Door and drawer lock Series 5812



- Robust locking system
- [For doors and drawers](#)
- Can be used for both horizontal and vertical positions
- [Different closures](#)
- Concealed screw connection





This lock can be used for more than drawers - it's also perfect for securing doors. The robust edge-mounted latch system has a concealed screw-on feature and can be used for both horizontal and vertical positions – the handleless equivalent of the ERGO series.

### Materials

Housing: Die-cast zinc, powder-coated  
 Strike element: Die-cast zinc, powder-coated  
 Cylinder: Die-cast zinc, chrome-plated  
 Cover plug: Plastic

Finish: Powder-coated

Standard color: Silver anodized (custom color)  
 Other colors (RAL) on request

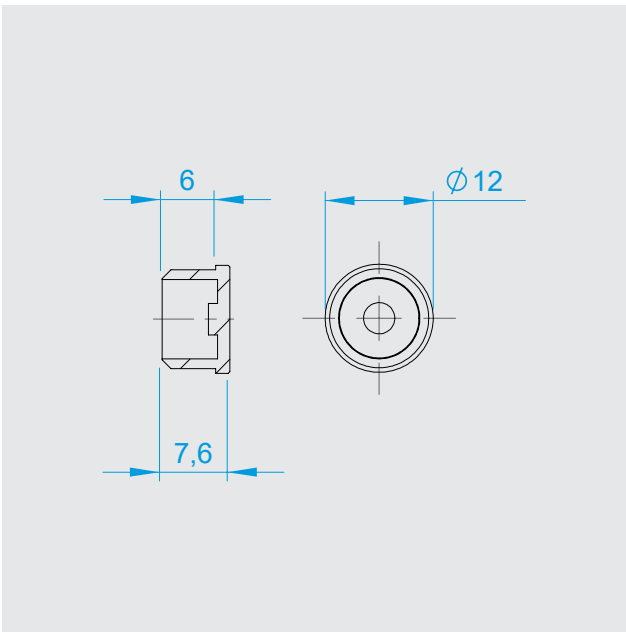
**Note:** Please also see the assembly instructions.

# Door and drawer lock



**5812-020010**  
Drawer latch with locking variant 1001  
Different locking variants available.

## Accessories



### Cover plug, plastic

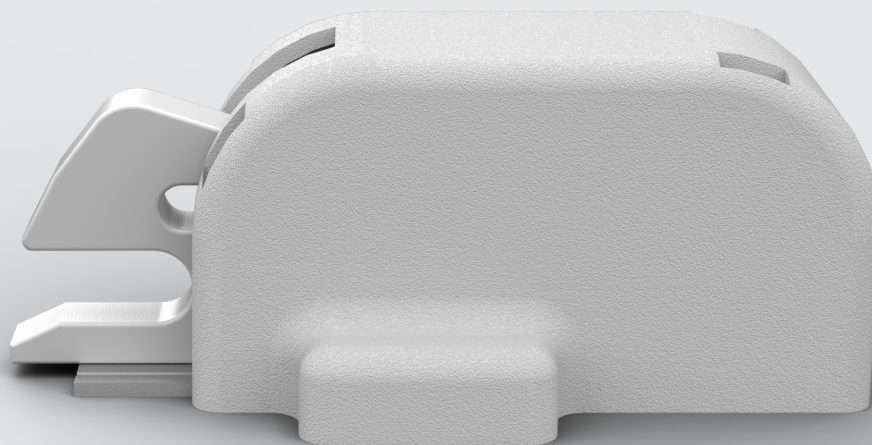
Black (RAL 9005)	<b>6186.1826</b>
Gray aluminum (RAL 9007)	<b>6186.1827</b>
White aluminum (RAL 9006)	<b>6186.1830</b>

2 cover plugs (6186.1827) are included in the scope of delivery of the 5812.

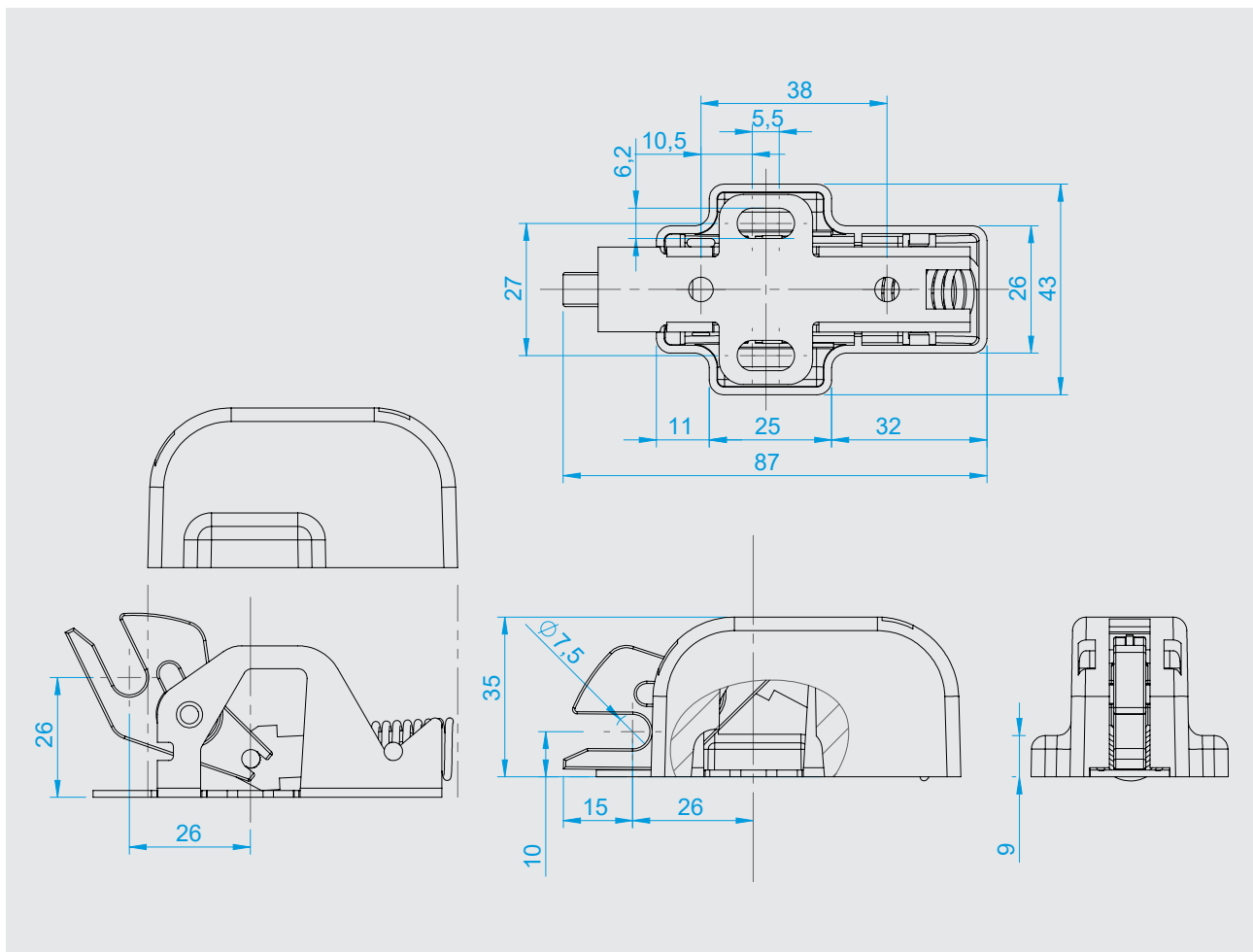


## Spring-loaded catch

### Series 5710



- Self-closing solution intended for concealed installation
- [Ideal for latch-free look](#)
- For doors and drawers
- [Latching possible with catch closed](#)



Invisible and amazing: This self-closing solution is intended for concealed installation. For example, it can be mounted behind a drawer or on the inside of a door. Using your own handles, you can create an ideal look that also works well: The system catches the strike even when the catch is in the closed position.

### Materials

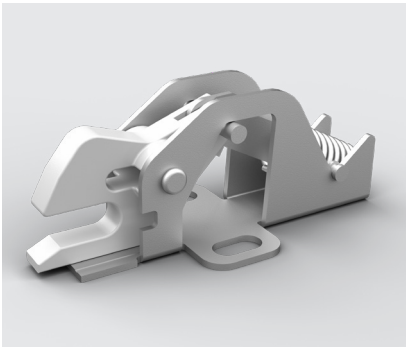
Lock detent:	Sheet steel, zinc-plated
Pressure spring:	Steel, zinc-plated
Spring pin:	Steel, zinc-plated
Mandrel:	Steel, zinc-plated
Catch:	Plastic
Cap:	Plastic

Cap color: Silver-gray

**Note:** Please also see the assembly instructions.

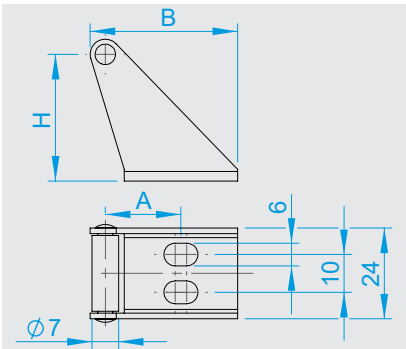


# Spring-loaded catch



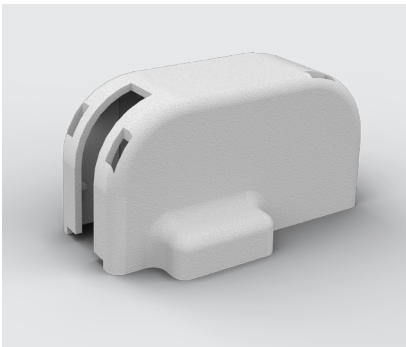
**5710-020050**  
Spring force 80N

# Strike

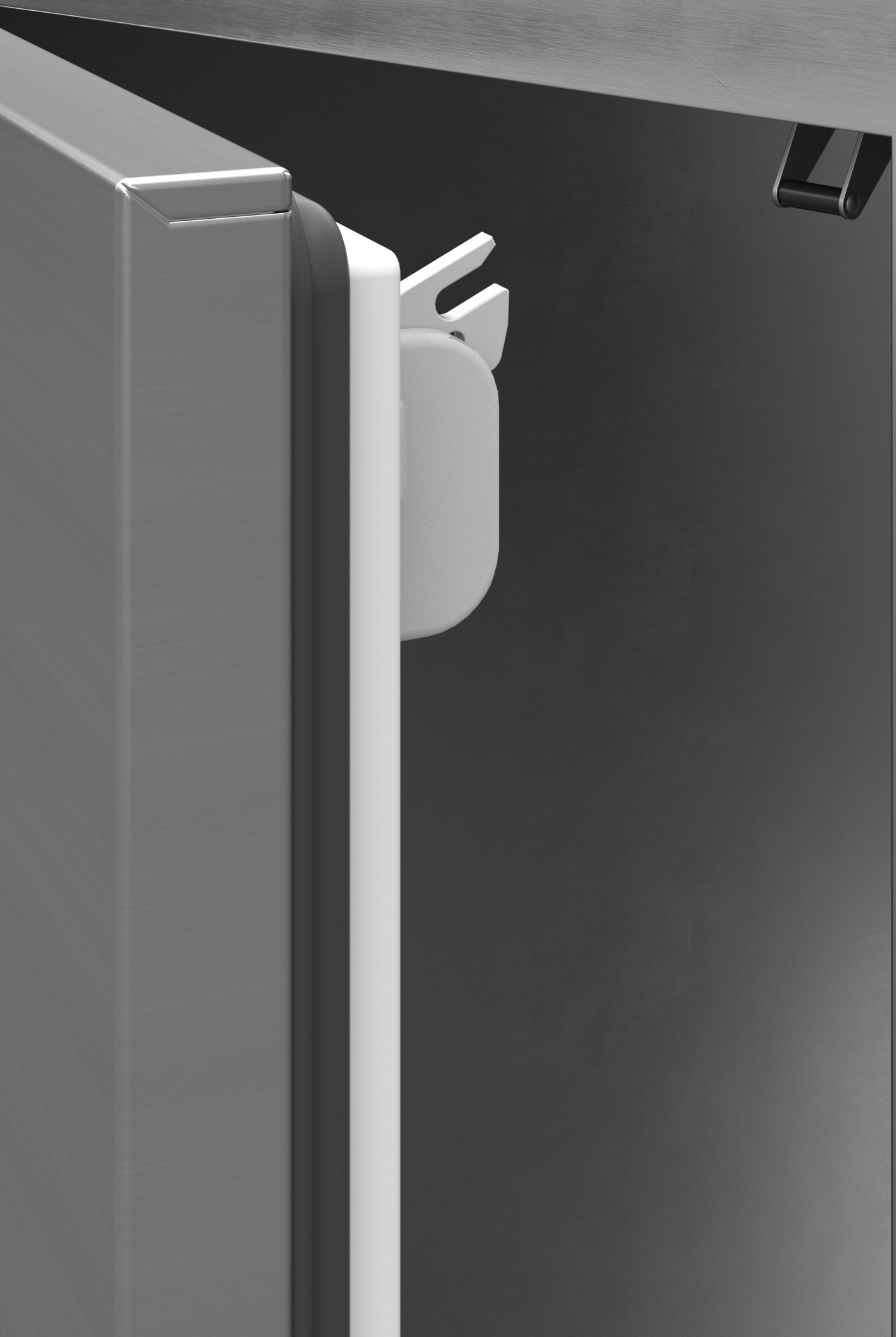


Strike A = 8 mm B = 24,5 mm H = 18 mm	<b>5710-020060</b>
Strike A = 14,5 mm B = 30,5 mm H = 25,5 mm	<b>5710-020070</b>
Strike A = 20 mm B = 39 mm H = 33,5 mm	5710-020075

# Cover

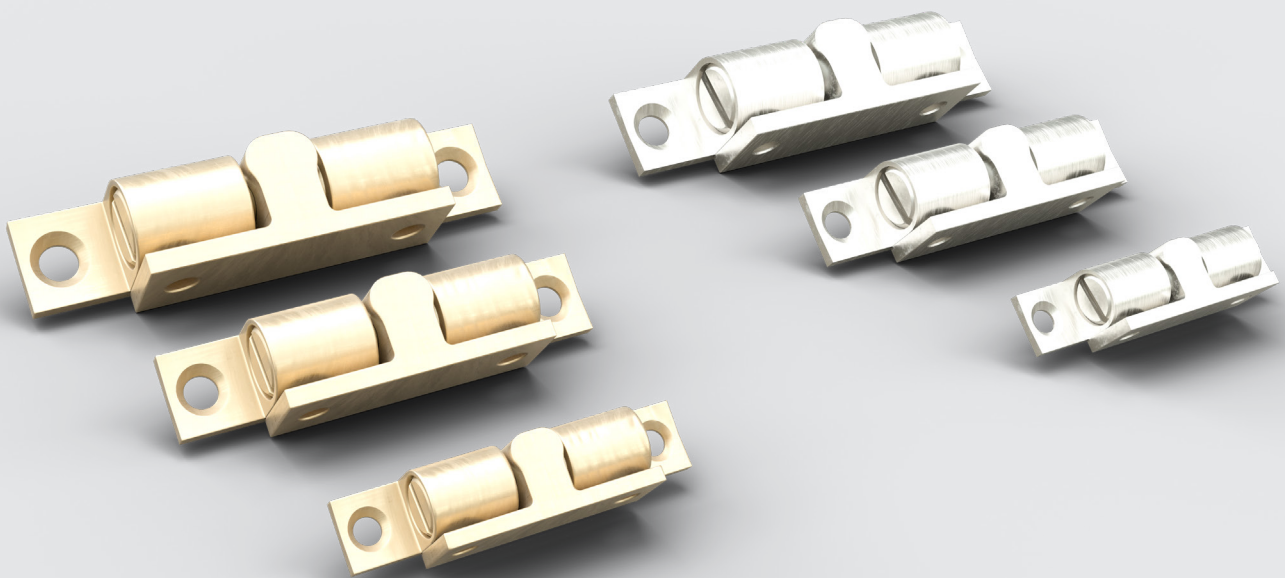


**5710-020055**  
Cover, silver-gray

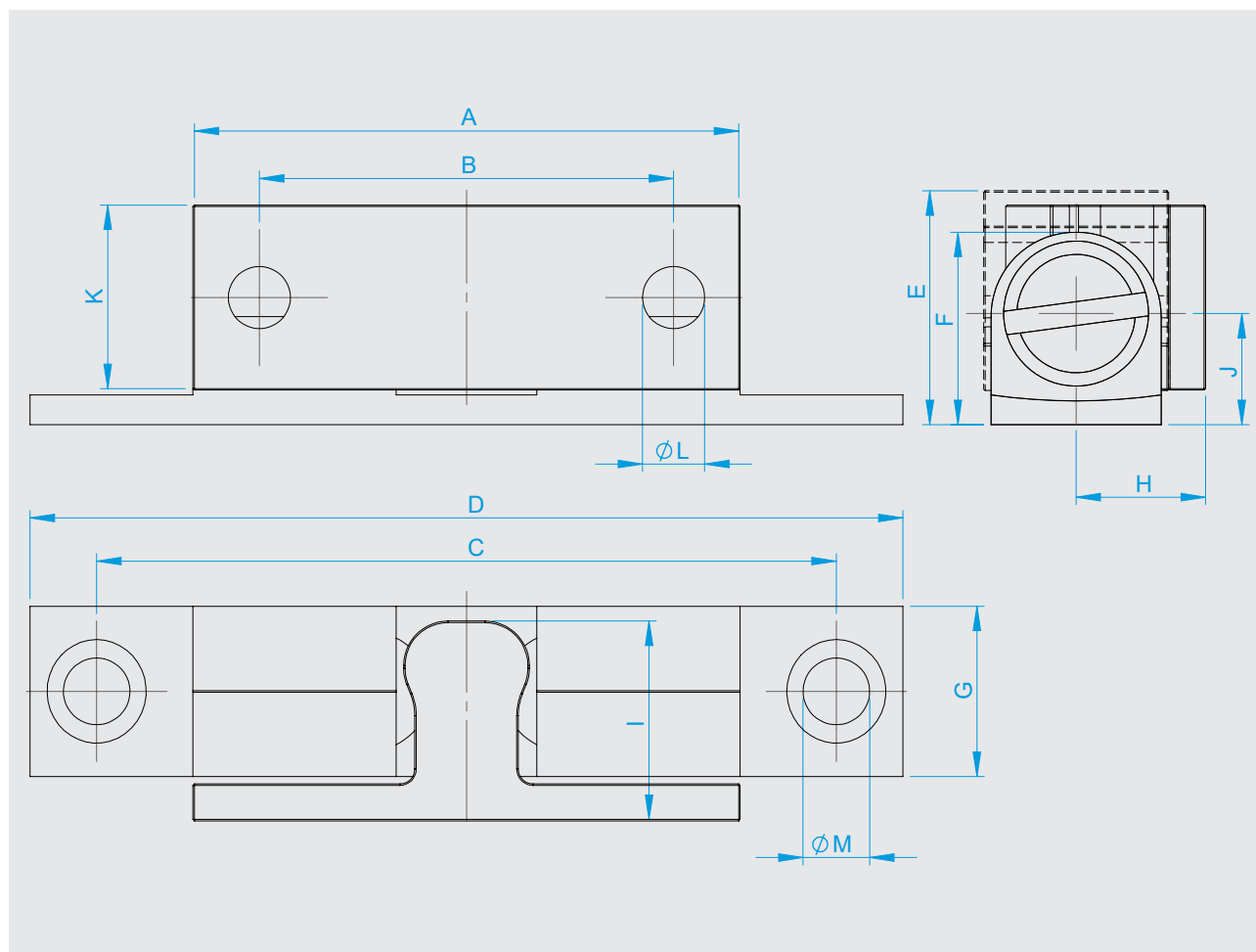


## Double ball catch

### Series 6195



- Classic, space-saving design
- [Universal application](#)
- Catch function with spring-loaded balls
- [Closing forces adjustable](#)
- Robust brass strike
- [Available in three sizes](#)



[mm]	A	B	C	D	E	F	G	H	I	J	K	L	M
Size 1	28,5	20	41	49	13	11	9	6	11,3	7	8,5	4,2	4,5
Size 2	37	28	50	59	15	13	11,5	7	13	8	11,5	4,2	4,5
Size 3	42	30	57	69	20	15	12,5	9	15	9	12,5	4,2	4,5

	Size 1	Size 2	Size 3
Brass, blank	<b>6195-041900</b>	<b>6195-041902</b>	<b>6195-041904</b>
Brass, nickel-plated	<b>6195-041901</b>	<b>6195-041903</b>	<b>6195-041905</b>

## Materials

Catch: Brass  
 Strike: Brass  
 Bearings: Steel  
 Springs: Steel

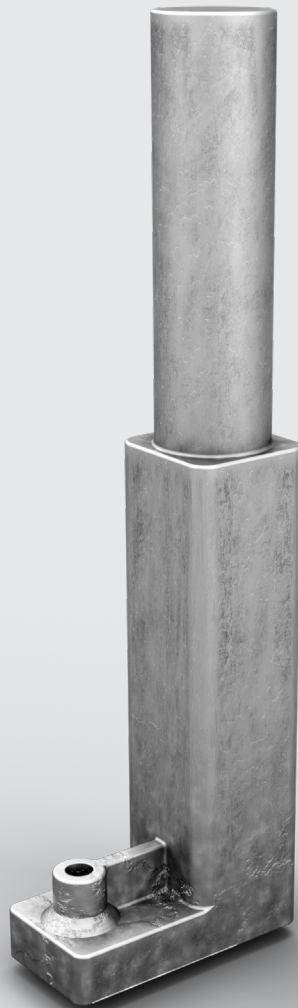
Finish: Blank brass or  
 Nickel-plated brass

**Note: Please also see the assembly instructions.**

## Double is better:

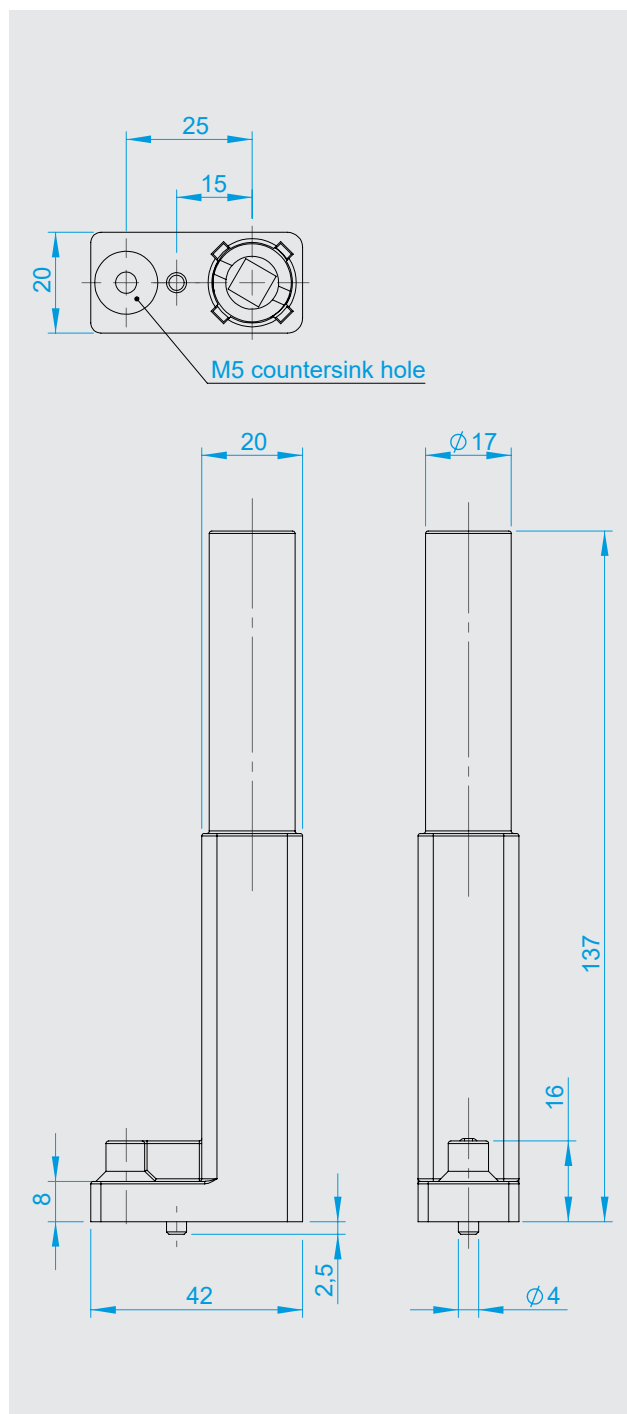
This double ball catch made of solid brass with a spring-loaded stainless steel ball is perfect for doors, furniture cupboards and drawers. A universal all-rounder, that convinces thanks to a space-saving design and adjustable closing forces.

## Spring-loaded hinge Series 3653 Dremo



- Hinge with integrated self-closing mechanism
- For commercial refrigerators and others
- Can be used for both left- and right-hand doors
- Self-closing
- Cartridge and door bearing to be foamed inside the door leaf
- Track bearing adjustable horizontally and vertically
- Opening angle 180°





**3653-020616**  
 Spring-loaded cartridge

#### Technical data

Recommended door - gross weight with at least  
 2 mounted hinges: approx. 40 kg  
 (incl. all attachments, such as fasteners, etc.)

Left- or right-sided, position-dependent  
 Cannot be reconfigured

Corrosion:  
 Foamed-in parts not protected against corrosion

Setting options:

X =  $\pm 2$  mm

Y =  $\pm 2.5$  mm

Z = -- mm

Max. opening angle 355°  
 Door remains open at opening angle >90°

Pivot point:  
 Preset pivot point 58 mm

Special features:  
 Automatic spring-loaded door closing

#### Materials

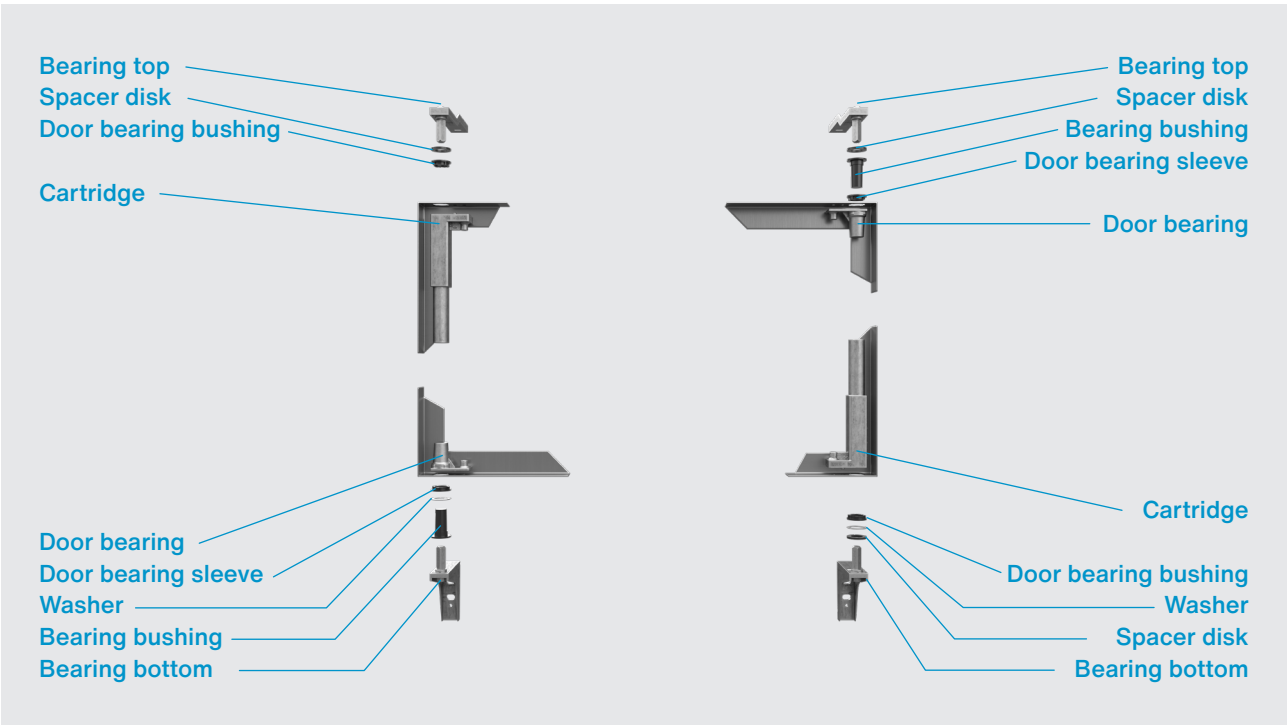
Hinge body: Die-cast zinc  
 Hinge pin: Steel, zinc-plated  
 Sliding curves: Plastic

Finish: Zinc-plated

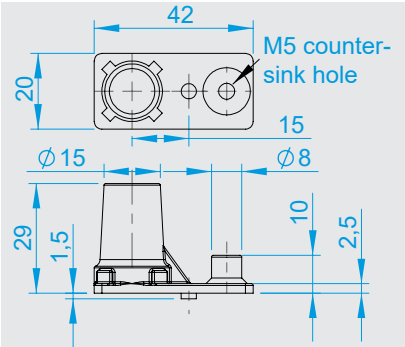
**Note: Please also see the assembly instructions.**

This hinge is a leader in commercial refrigerators in supermarkets and laboratories: With its integrated self-closing assistance, it successfully helps to save cooling energy. The spring hinge, consisting of the cartridge and door bearing, is foamed into the insulation core during installation — at the top for left-hand doors and at the bottom for right-hand doors. The track bearing is adjustable both horizontally and vertically and the opening angle is 180°.

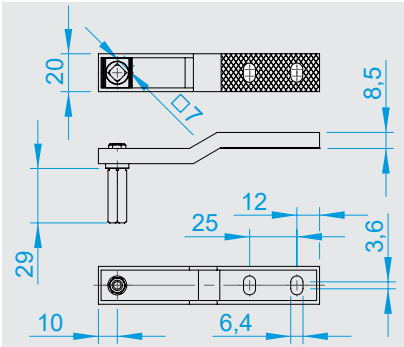
# Spring-loaded hinge



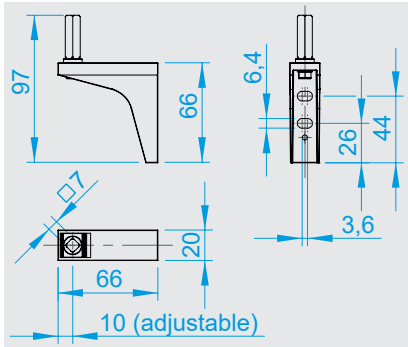
## Accessories



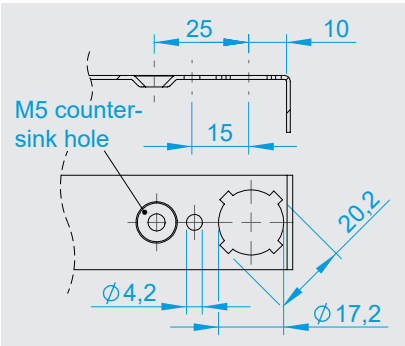
**3653-020617**  
Door bearing



**3653-020618**  
Bearing top



**3653-020619**  
Bearing bottom



## Hole pattern

Washer, brass	<b>3653-020516</b>
Spacer disc, plastic	<b>3653-020517</b>
Door bearing bushing, plastic	<b>3653-020518</b>
Bearing bushing, plastic	<b>3653-020519</b>





## Cold storage catalog



### Multi-function latching system

P 4

### Multi-function latching system

P 16

Series 7501 VITRO

### Multi-function latching system

P 20

Series 7503 NITRO

### Multi-function latching system

P 24

Series 7506

### Multi-function latching system

P 28

Series 7507

### Multi-point latching

P 30

Series 7505 ROBUSTO

### Cold room door latch

P 34

Series 6000 JUMBO

### Cold room door latch

P 42

Series 6002 JUMBO

### Cold room door latch

P 48

Series 6004 RONDO

### Bolt latch

P 54

Series 7150

### Panel fastener

P 58

Series 0270

### Edge-mounted hinge

P 62

Series 4514 FUTURO

### Edge-mounted hinge

P 66

Series 7514 BONO

### Edge-mounted hinge

P 70

Series 4000/4001

### Edge-mounted hinge

P 74

Series 4510/4511

### Edge-mounted hinge

P 78

Series 4002/4003

### Edge-mounted hinge

P 82

Series 4004

### Edge-mounted hinge

P 86

Series 4006

### Hinge

P 90

Series 4296

### Hinge

P 94

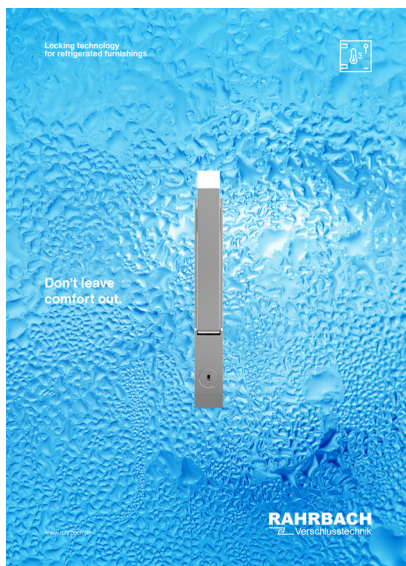
Series 5000

### Hinge

P 96

Series 7902

## Refrigerated furnishings catalog



### Edge-mounted latch

P 4

Series 6188 ERGO

### Edge-mounted latch

P 8

Series 6190 ERGO

### Edge-mounted latch

P 14

Series 6186 Presto

### Surface-mounted latch

P 20

Series 6180

### Surface-mounted latch

P 24

Series 6770

### Panel fastener

P 28

Series 0253

### Strap hinge

P 32

Series 4480

### Surface-mounted hinge

P 36

Series 7900

### Edge-mounted hinge

P 38

Series 4500

### Edge-mounted hinge/Spring-loaded hinge

P 42

Series 4513

### Cylinder lock

P 46

Series 5801

### Door and drawer lock

P 50

Series 5811

### Door and drawer lock

P 52

Series 5812

### Spring-loaded catch

P 56

Series 5710

### Double ball catch

P 60

Series 6195

### Spring-loaded hinge

P 62

Series 3653 Dremo

## Heated applications catalog



### Pendulum latch

P 10

Series 6332

### Pendulum latch

P 14

Series 6333

### Pendulum latch

P 18

Series 6334

### Pendulum latch

P 22

Series 6303

### Latching mechanism

P 26

Series 6339

### Cam action latch

P 30

Series 6302

### Cam action latch

P 34

Series 6300

### Two-point latch

P 38

Series 6337

### Two-point latch

P 42

Series 0751

### Edge-mounted latch

P 46

Series 6200 DUPLO

### Edge-mounted latch

P 50

Series 6188 ERGO

### Electro-magnetic latch

P 56

Series 8440 HOPPO

### Strike blocking unit

P 60

Series 6311





